

SKYLINE®



RH
SPECTRA



WELCOME HOME TO

SPECTRA







Meet Spectra

The latest ranch design from Skyline Homes®. Created with the right balance of comfort, utility and spectacular finishes, Spectra is sure to be the talk of the town.

Explore the beauty within.





The Kitchen

Many agree that the kitchen is the most important room in the home. So, we were careful to think through its design and created a space that is stylish, inviting, and packed with every amenity to keep the chef happy.

- Large 4'x8' island with quartz countertop
- Black stainless-steel appliances from Whirlpool®
- Euro-style rangehood
- Full height ceramic backsplash
- Tall designer chrome faucet with pull-out sprayer
- LED recessed lighting
- Abundant storage



The Master Bath You Dream About

Spectra brightens up your morning ritual and puts a smile on your face, even at 5 a.m.

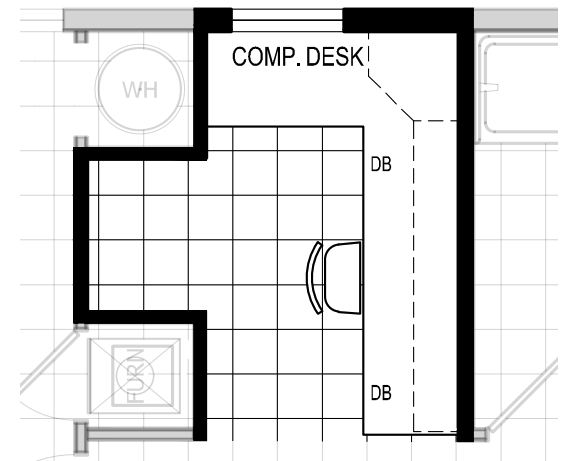
- 4' x 6' Spa shower including acrylic shower surround, rainforest showerhead, clear glass door, and top-mount chrome roller track
- 7' Vanity with LED lighted mirrors
- Porcelain vessel sinks and modern brushed nickel faucets





Home Office

Get organized and boost productivity in your new home office. Spectra RH offers a large built-in desk with 26 sq. ft. of work surface, spacious overhead cabinets, and two drawer banks.

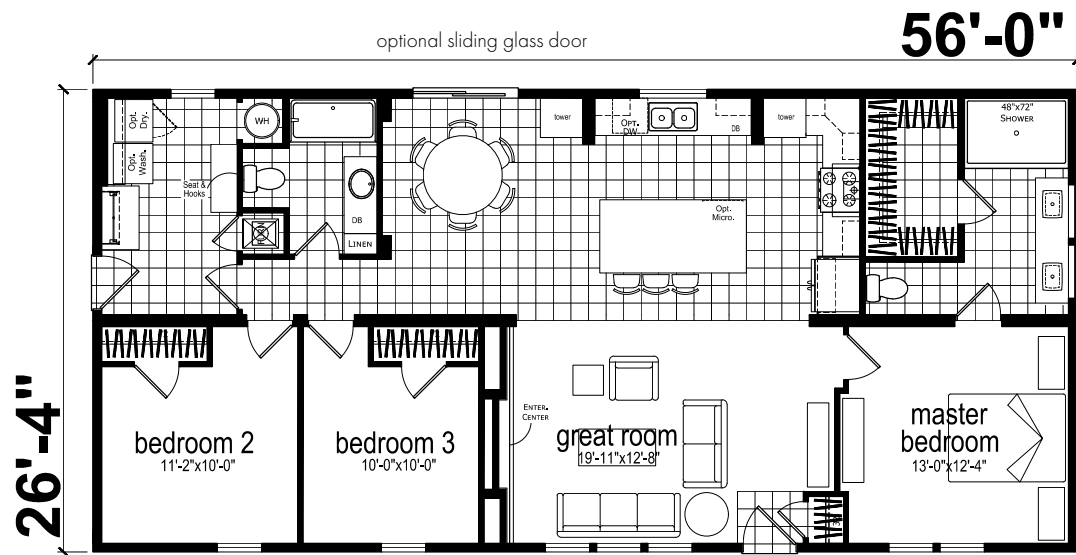


A "Great" Room

Spectra's great room features make it the perfect space for cozy family time and entertaining.

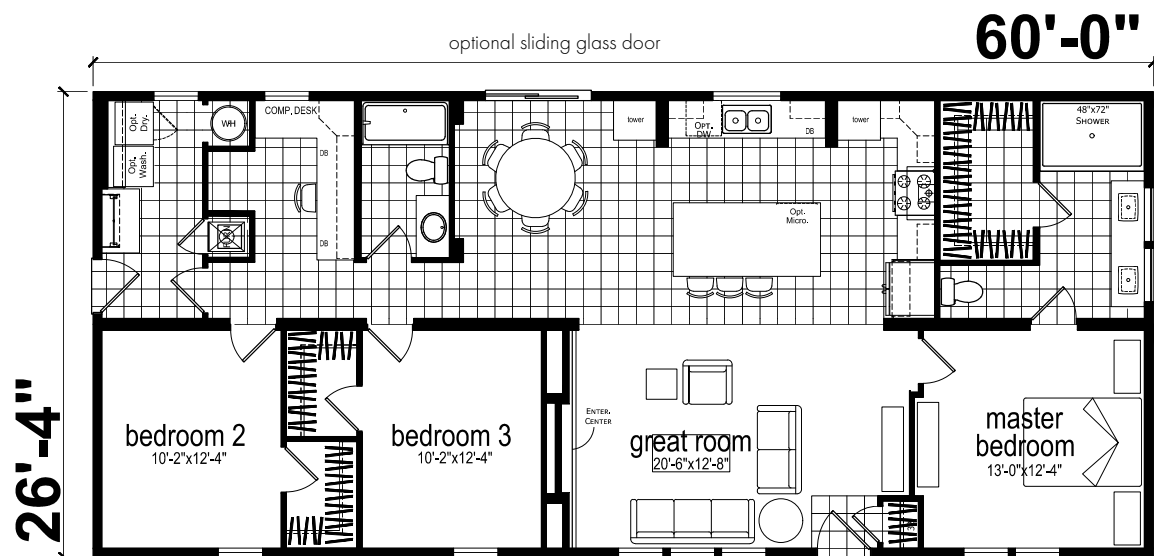
- Built-in entertainment wall with large TV opening
- Electric fireplace with multiple flame settings and heat controls
- Shelving for your favorite books, DVDs and décor
- Rich wood trim accents
- Stacked-stone inlays





RH56

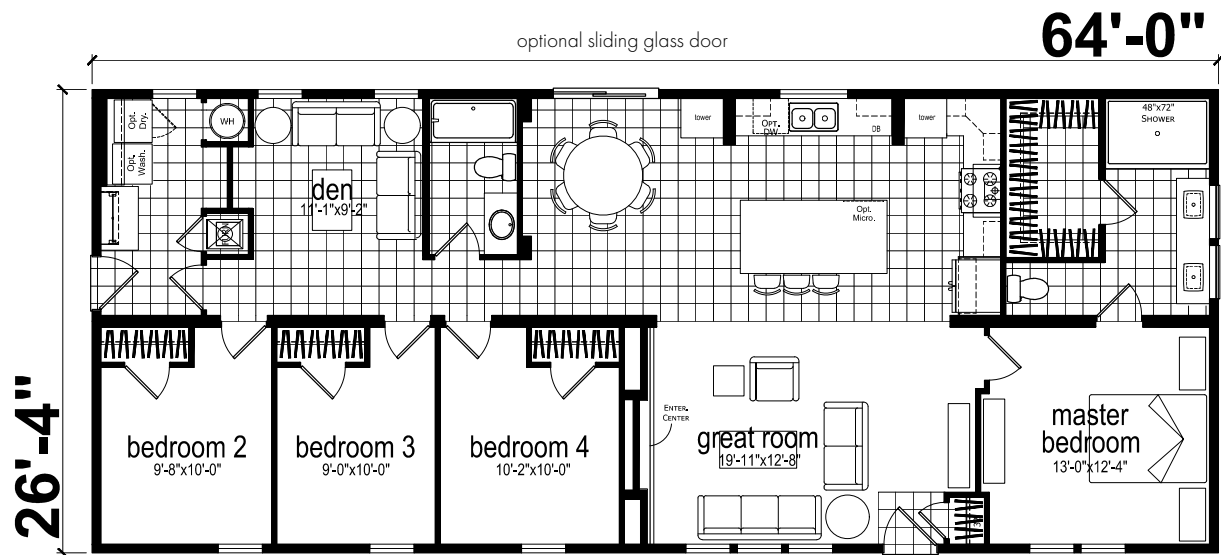
3 Bed-2 Bath
1,475 Sq. Ft.



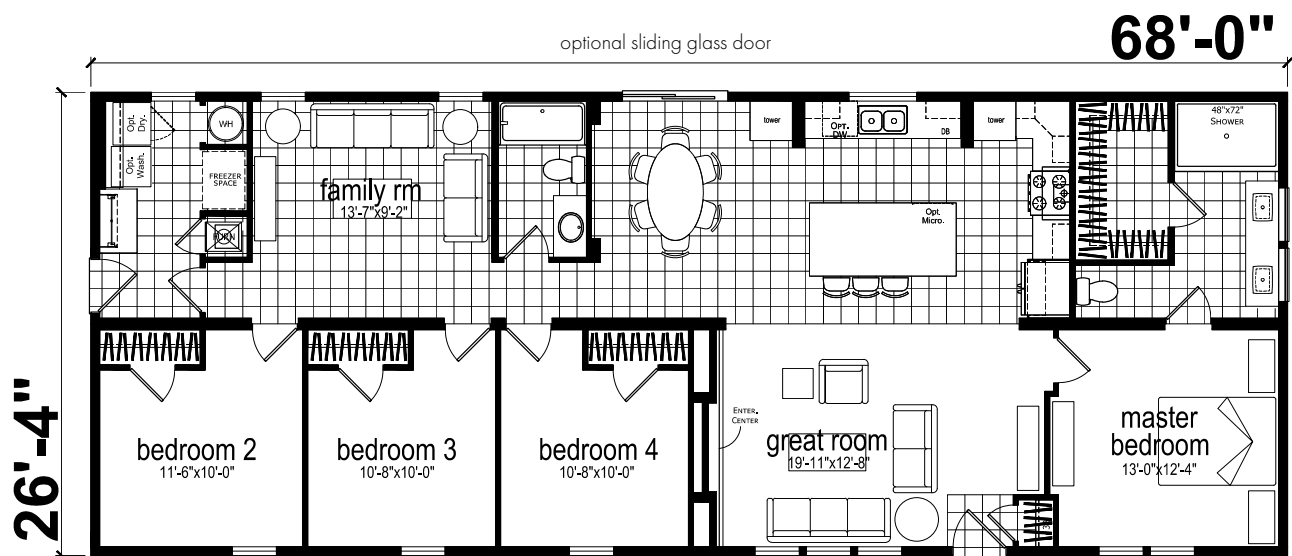
RH60

3 Bed-2 Bath
1,580 Sq. Ft.





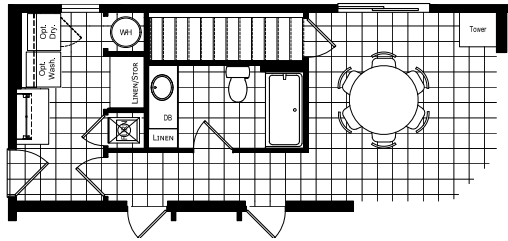
RH64
4 Bed-2 Bath
1,685 Sq. Ft.



RH68
4 Bed-2 Bath
1,790 Sq. Ft.

Basement Stairwell Option

An optional basement stairwell is available on all Spectra RH designs. Your local retailer will have more details about adding the basement stairwell option and the impact it has on adjacent rooms.



Optional Exteriors



SPECTRA^{RH}

STANDARD FEATURES

CONSTRUCTION

- 2x6 16" OC Floor Joists
- Flat Ceiling
- 8' 2x6 Sidewall
- Nominal 3/12 Roof Pitch
- 3/8" OSB with House Wrap

THERMAL

- R-19 Wall Insulation
- R-22 Floor Insulation
- R-28 Roof Insulation

FLOOR COVERING

- Carpeting Master Bedrooms and Living Room
- 3/8" Rebond w/Carpet Tack Strip Carpet Pad
- Congoleum® Vinyl Flooring

EXTERIOR

- 25 Year Shingles
- 20 Pound Roof Load
- Fiberglass 4-Lite Exterior Front Door
- Fiberglass 9-Lite Exterior Rear Door

WINDOWS

- Vinyl Gridded Windows
- Optional 2" Mini Blinds Throughout
- Full Drapes with Decorative Metal Rods on Main Windows in Living Areas & Master Bedroom
- Valances in Living Areas

PLUMBING/HEATING

- Gas Furnace
- Optional 40 Gallon Electric Water Heater
- PEX™ Waterlines with Oetiker® Clamps
- Perimeter Heating with Insulated Duct Board
- Water Shut-off Valves at All Fixtures
- Exterior Frost-Free Faucet
- Toe Kick Registers in Kitchen and Both Baths

ELECTRICAL

- 100 AMP Service
- Nest® Thermostat
- One Standard USB Charger in Kitchen
- Living Room Chase & Brace at Entertainment Center
- Optional Ceiling Fan
- CO Smoke Detectors
- Exterior GFI Receptacle

UTILITY

- Standard Plumbing/Wiring for Washer & Dryer
- Drying Rack in Utility
- Metal Furnace Door

LIGHTING

- 4" LED Can Lights Per Print in Dining Room
- 4" LED Can Lights Per Print in Kitchen
- 4" LED Can Lights Per Print in Walk-in Closets
- Exterior Coach Light at All Exterior Doors

INTERIOR

- ½" Full Finished Drywall
- Textured Ceiling with Stipple Finish
- Nickel Hardware
- Wire Closet Shelving
- Six-Panel White Interior Doors
- Mortised Interior Door Hinges
- Painted Interior Trim Throughout
- Hardwood ¾ Wall Craftsman Wainscot in Dining Room
- Optional Painted Accent Wall
- Entertainment Center/Electric Fireplace with Stone Accent

KITCHEN/APPLIANCES

- 8" Stainless Steel Sink
- Satin Nickel Pull Down Faucet at Kitchen Sink
- Granite Island Countertop
- Crescent Edging in Kitchen
- 42" Kitchen Cabinets
- Adjustable Overhead and Base Shelves in Kitchen Cabinets
- 4" Ceramic Tile Backsplash
- 4" Ceramic Tile Backsplash Behind Range to Under Range Hood
- Soft Close Cabinet Hinges and Drawers
- Black Stainless Power Range Hood
- Black Stainless 22 cu ft Side by Side Whirlpool® Refrigerator
- Black Stainless Whirlpool® Self Cleaning Gas Range
- Black Stainless Whirlpool® Built-in-Microwave
- Black Stainless Whirlpool® Dishwasher

MASTER & SECONDARY BATH

- China Bath Sink in Hall Bath
- Drawer Bank in Master Bath
- Towel Bars & Paper Holders
- 4" Ceramic Backsplash
- Elongated Commodes
- Crescent Countertop Edge
- Optional Single Lever-Faucet in Hall Bath
- 1-Piece Fiberglass Tub/Shower in Hall Bath
- 4x6 Agile® Shower with Glass Barn Shower Doors
- 8" Satin Nickel Rain Showerhead in Master Bath Shower
- Backlit Mirrors in Master Bath
- Rectangle Vessel Bowls in Master Bath
- Vessel Faucet in Master Bath – Satin Nickel

Spectra CS is available in multiple sizes and configurations. All dimensions are approximate. Décor items such as flooring, cabinet finishes, countertop materials, trim/molding, and tile backsplash will vary by region. Appliances shown may vary by region. Some photography shows optional features. Ask your local retailer for details.



SKYLINE®

Built in Sugarcreek, OH