



REDMAN  HOMES®



# ABOUT US

**Redman Homes is one of the oldest and most respected homebuilders in America. Founded in 1937, Redman pioneered factory home construction and continues to lead advances in quality control, design and home value today. Through experience and innovation we've harnessed production line efficiency and, paired with our high-quality craftsmanship, created a process that delivers homes that meet our superior standards.**

## **A place to call your own**

Beyond just building you a house, we're committed to providing you and your family with a home to make memories in that will last a lifetime. Somewhere you can feel secure. A place you can call your own. A home that fits your lifestyle and has your own personal touch. Whether you're an active young family constantly on the go or empty nesters ready to simplify, just relax – we have a home that's right for you.

## **Building the best**

We build each and every home to meet or exceed a strict national or state building code, and we set even higher standards for ourselves. Focusing on the things you don't see as well as the things you do, we monitor and inspect our homes at every stage of construction. From the plumbing system to the electrical wiring, from the kitchen cabinets to the closets in the bedrooms – every home we build undergoes rigorous quality inspections to ensure we're providing you with nothing but our best.

## **More choice, more freedom**

Our vast selection of floor plans, color choices and options give you the freedom to express your personal style and fit your home around your life. Using our online Kitchen Designer, it's easy to create the kitchen of your dreams.

## **The quality you expect**

To build the best, we use the best. To meet your expectations of quality - and ours - we use only the highest-quality building materials and trusted national brand names. From insulation and fixtures to flooring and appliances, we only buy components from suppliers who share our commitment to quality. By using the best, we're confident we can build you a home with the lasting value you'll appreciate for years to come. Your housing consultant can tell you more about the specific brands used in our homes.

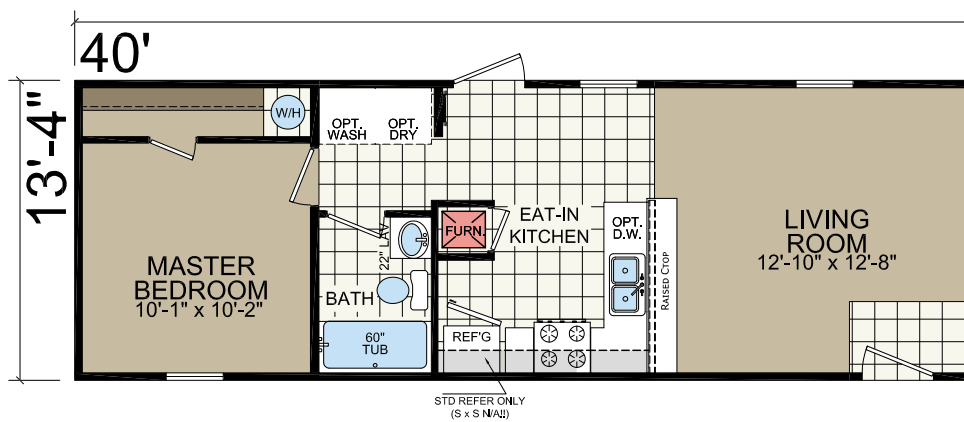


1444-201

14' x 40'  
1 bed-1 bath  
533 sq. ft.



Shown with Site-built Porch

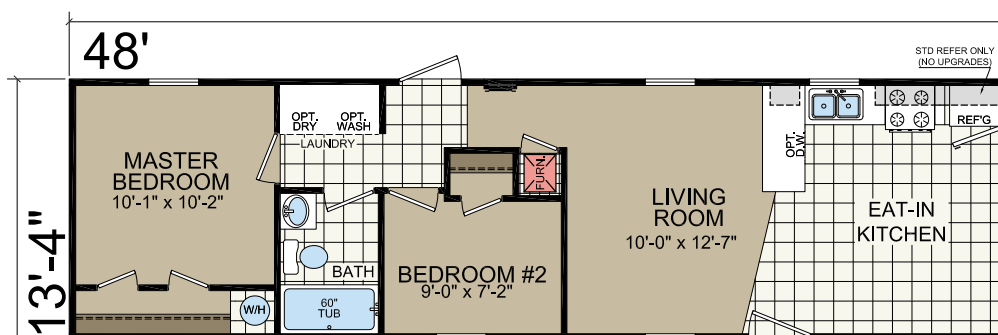


# 1452-201

14' x 48'  
2 bed-1 bath  
640 sq. ft.

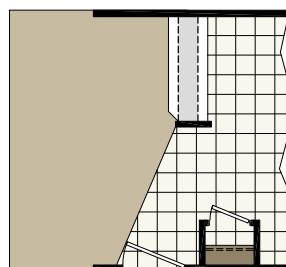


Shown with Site-built Porch



REQUIRES 2x6 Ext WALLS

OPTIONAL BAR



OPT CLOSET  
OR PANTRY

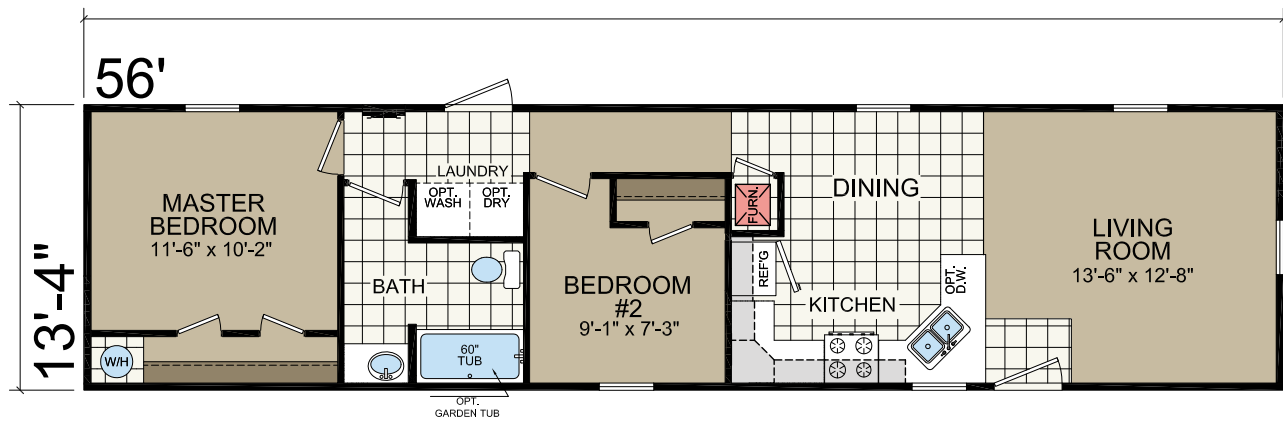


# 1460-203

14' x 56'  
2 bed-1 bath  
747sq. ft.



*Shown as Reverse Aisle and Site-built Porch by others*

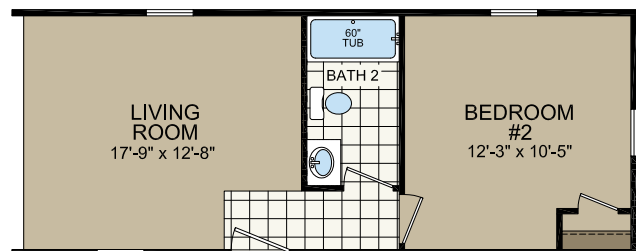
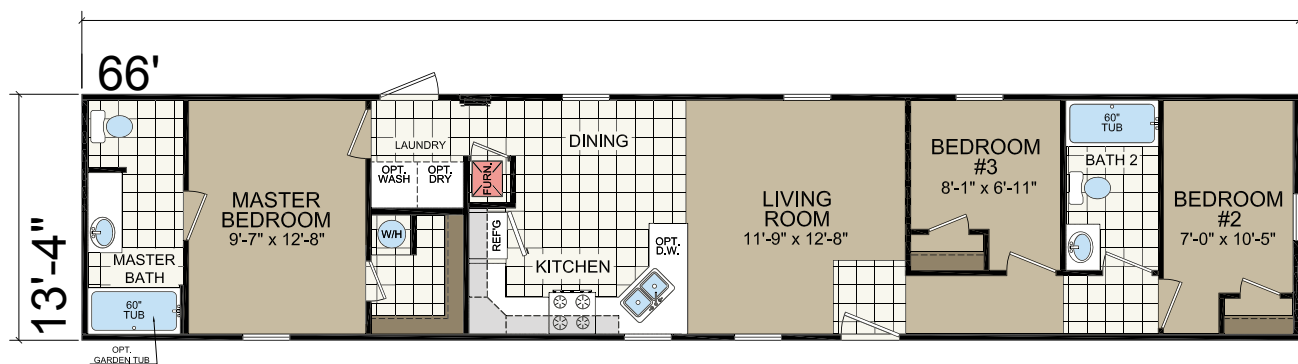


# 1470-205

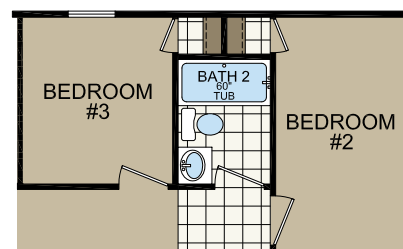
14' x 66'  
3 bed-2 bath  
880 sq. ft.



Shown with Site-built Porch



2 BEDROOM OPTION



BATH 2 OPTION  
(COMMUNITY ORDERS ONLY)

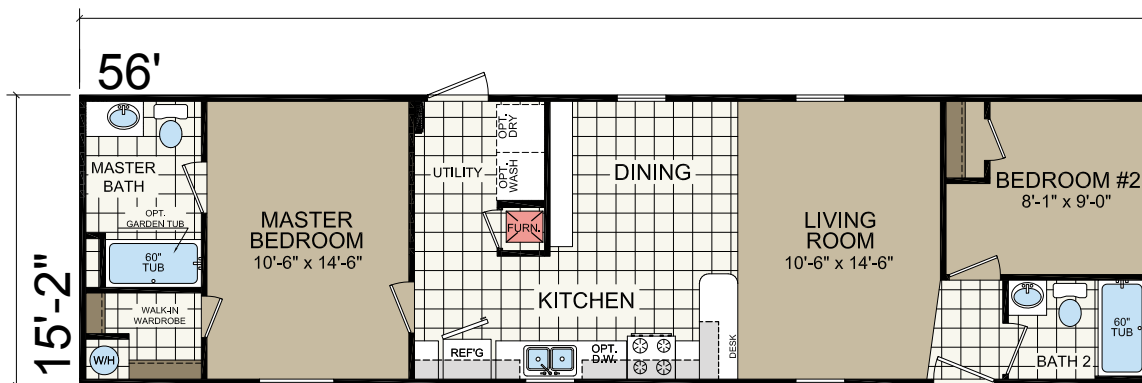


# 1660-205

16' x 56'  
2 bed-2 bath  
849 sq. ft.



*Shown with Optional Master Bedroom Windows  
Shown with Site-built Porch*



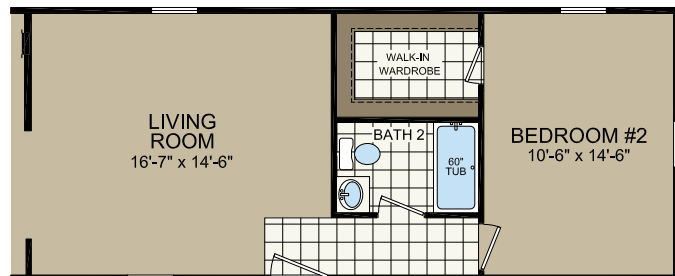
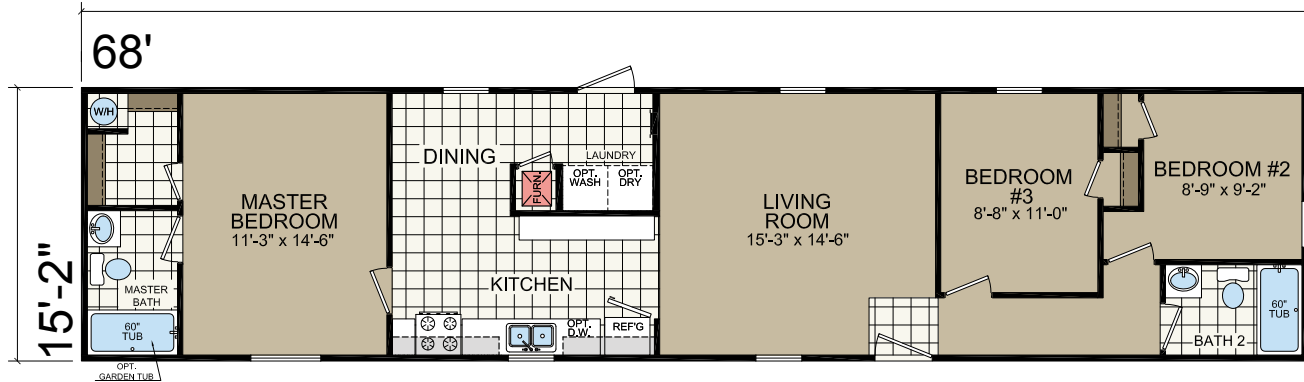


# 1672-201

16' x 68'  
3 bed-2 bath  
1031 sq. ft.



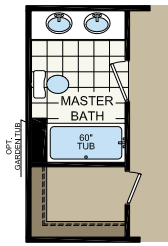
*Shown with Optional Master Bedroom Windows  
Shown with Site-built Porch*



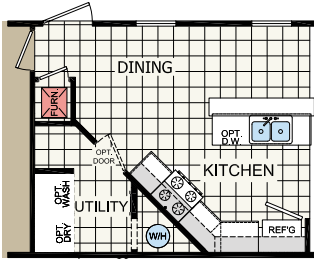
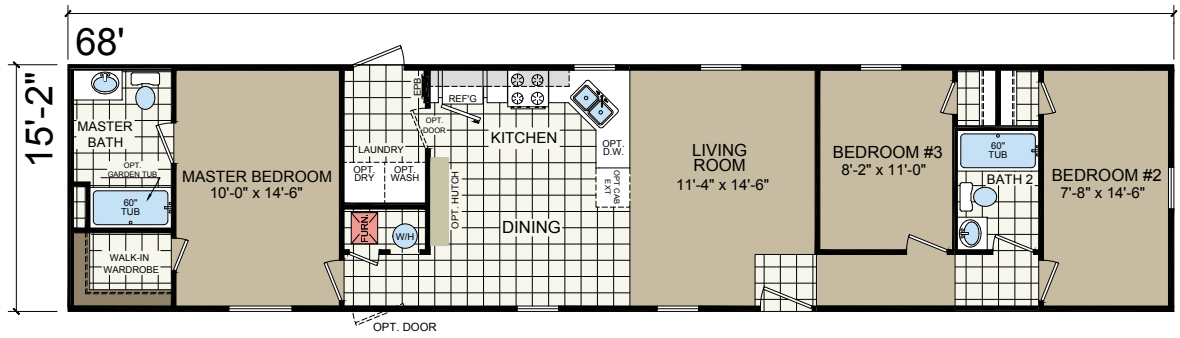
2 BEDROOM OPTION

# Family of Homes

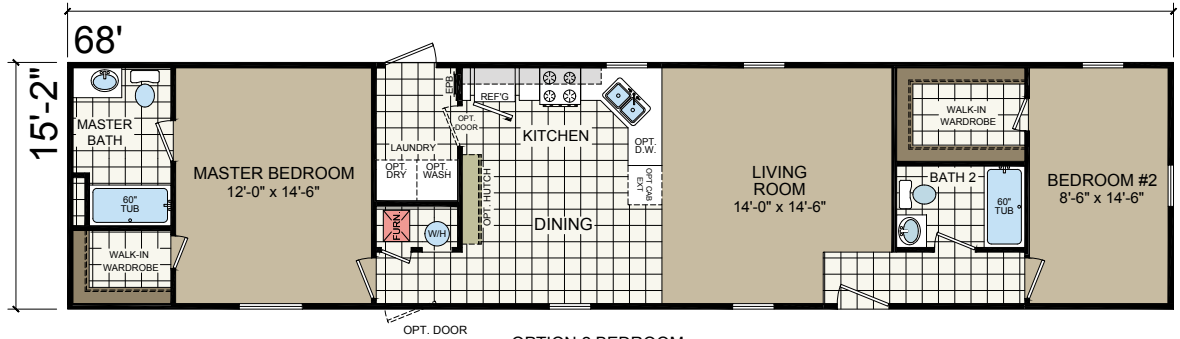
1672 205  
16' x 68'  
3 bed-2 bath  
1031 sq. ft.



MASTER BATH  
OPTION



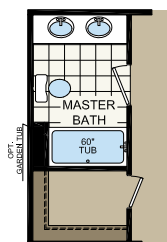
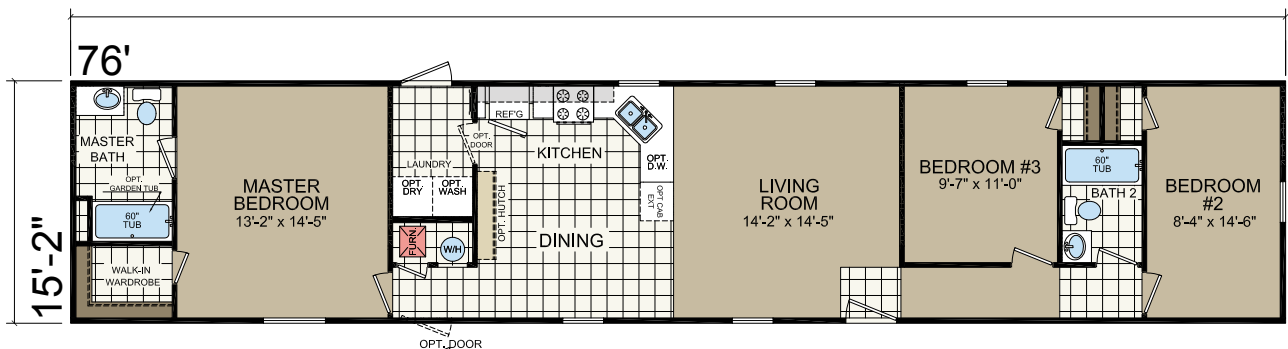
KITCHEN OPTION



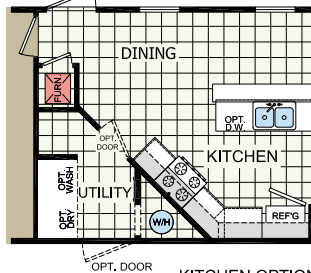
OPTION 2 BEDROOM  
LAYOUT

# Family of Homes

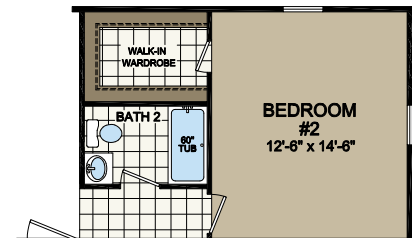
1680 203  
16' x 76'  
3 bed-2 bath  
1152 sq. ft.



MASTER BATH  
OPTION



KITCHEN OPTION



2 BEDROOM OPTION

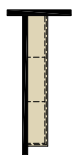
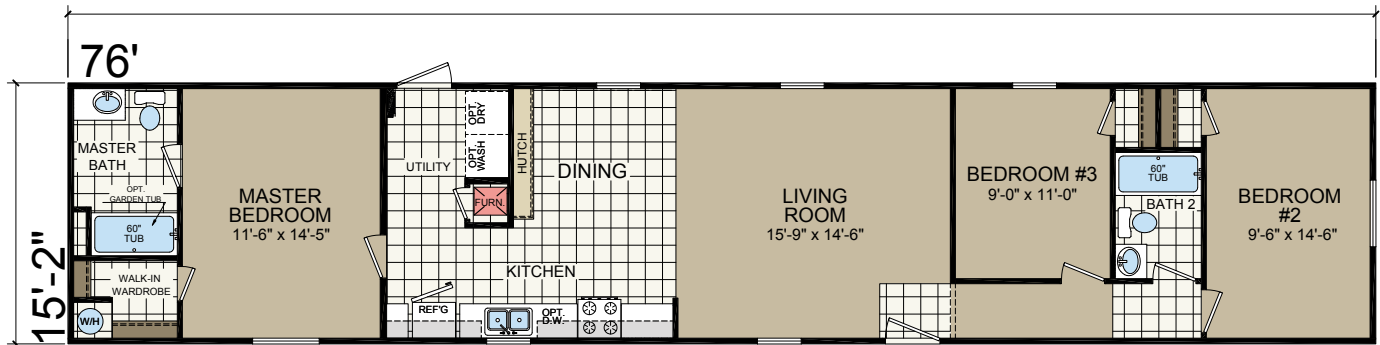


# 1680-215

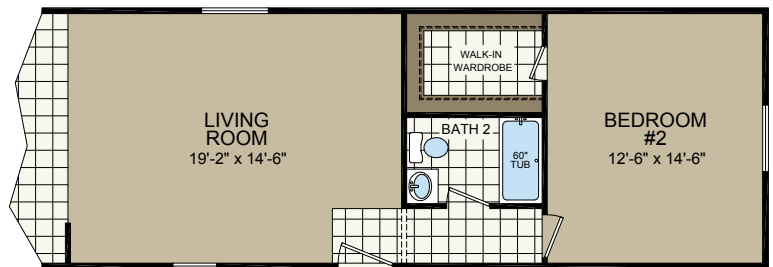
16' x 76'  
3 bed-2 bath  
1152 sq. ft.



Shown with Optional Windows in Master Bedroom & Bedroom #2  
Shown with Site-built Porch



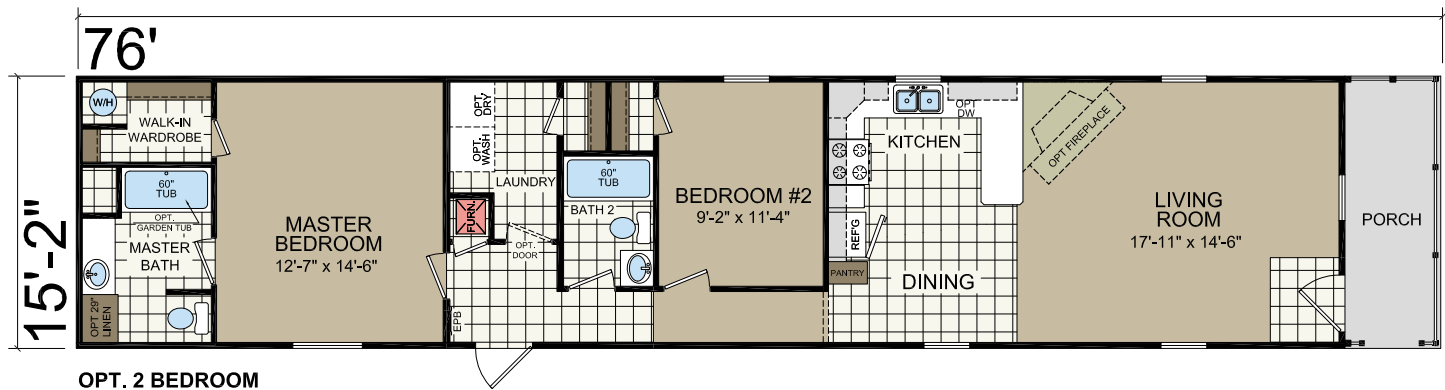
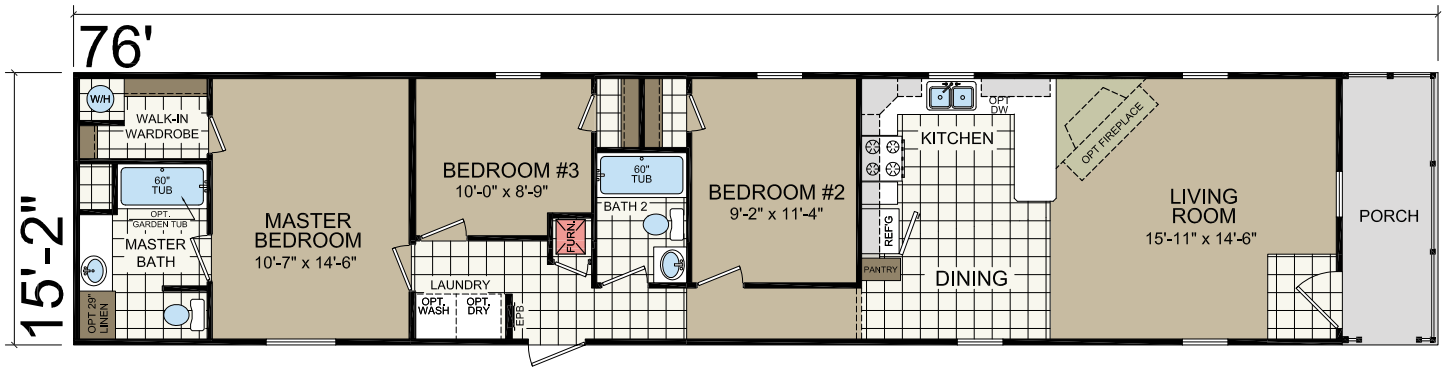
**OPT UPGRADED HUTCH**  
INCLUDES 42" OVERHEADS IN KITCHEN



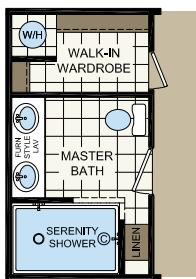
**2 BEDROOM OPTION**

# 1680-265

16' x 76'  
3 bed-2 bath  
1072 sq. ft.



**OPT. 2 BEDROOM**



**OPT. SERENITY BATH**

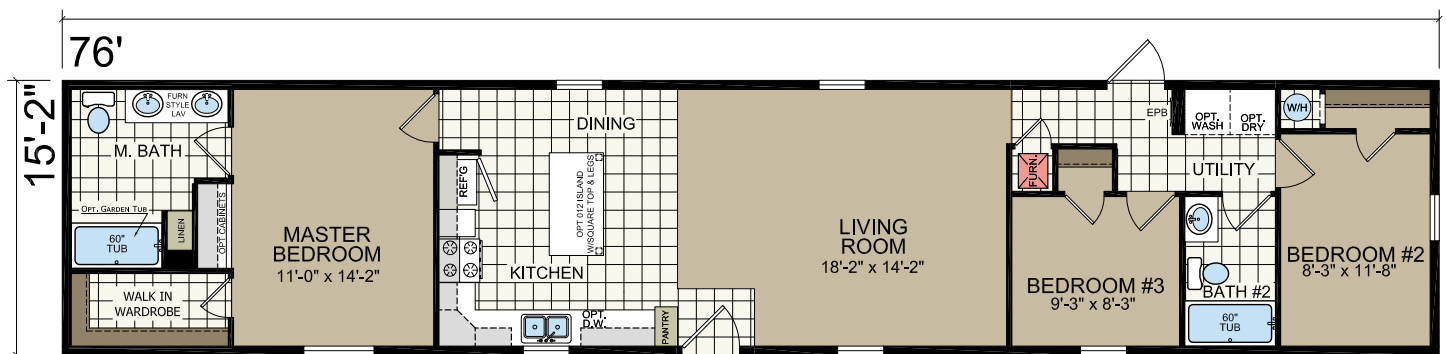


1680-271

16' x 76'  
3 bed-2 bath  
1152 sq. ft.



Shown with Optional Endwall Treatment and Site-built Porch by Others



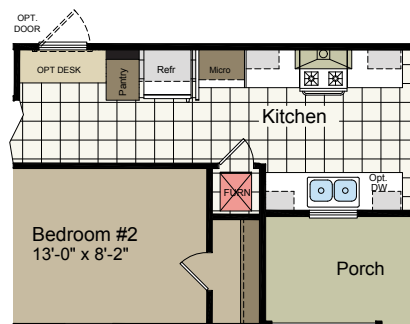
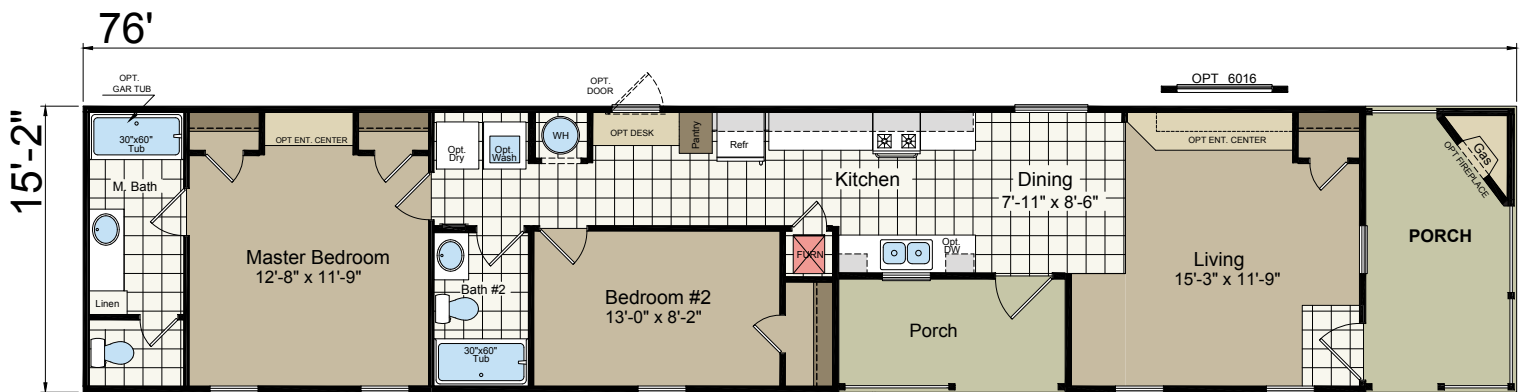


1680-275

16' x 76'  
2 bed-2 bath  
960 sq. ft.



Shown with Optional Exterior Elevation



Optional Kitchen #1



# ADVANTAGE SINGLES II

## STANDARD FEATURES

### STRUCTURAL

- Recessed Frame
- Detachable Hitch
- 48" OC Outriggers
- 2 x 4 Exterior Sidewalls - 16" OC
- (14') 2 x 6 Floor Joist - 16" OC
- (16') 2 x 8 Floor Joist - 16" OC
- R-11 Sidewall Insulation
- Upgrade R-11 Floor Insulation w / Additional R-11 Outside I-Beams
- R-33 Roof Insulation - 14'
- R-28 Roof Insulation - 16'
- 5/8" OSB Decking
- 7/16" OSB Roof Sheathing
- 30lb PSF Roof Load

### INTERIOR FINISH

- Flat Ceilings
- VOG Main Panel T/O
- Accent Panels - VBP  
(Choice 1 Pattern Per House)
- Live Wire Carpet
- Tack Strip
- 5lb Rebond Carpet Pad
- Linoleum - Factory Designers Choice
- Valances LA's
- Wire Shelving in Closets
- Smoke Alarms w / Battery Backup
- Flat Wrapped Door Casing
- Flat Ceiling Cove
- Wrapped Door Jambs
- Wrapped Window Jambs
- Formica® Countertops
- Self Edge Countertops
- 6" Nickel Interior Lights - VBP

### EXTERIOR

- 8' Sidewalls
- Nominal 3/12 Roof Pitch
- 25 Year Shingles
- Storm Board Sheathing
- Double 4" Vinyl Siding
- White Aluminum Fascia
- White Vented Soffit
- Raised Panel Shutters - FDS & Hitch End
- **Black Torch Light - Front Door**
- Exterior Light - Rear Door

### KITCHEN / BATHROOMS

- Black Standard Electric Range
- Black 30" Range Hood
- Black Over/Under Refrigerator
- 30" O/H Cabinets
- Wrapped Flat Panel Cabinets
- **Lined Overhead Cabinets w/Adj Shelf**
- Corner Cabinet (VBP)
- **Center Shelves in Base (Kitchen)**
- Wrapped Cabinet Stiles
- Single Bank of Drawers (Kitchen)
- Shelf Over Refrigerator
- 2 Knob Kitchen Faucet w / Sprayer
- 7" Stainless Steel Kitchen Sink
- 60" Fiberglass Tub/Shower Combo
- Round Commode
- Single Bank of Drawers - Baths - VBP
- China Lav Bowls
- **30" Bath Lavs (VBP)**
- 2 Knob Bath Faucets
- Lighted Bath Fan
- Nickel Cabinet Knobs Throughout

### WINDOWS & DOORS

- **6 Pnl Residential Front Door (no storm)**
- **Cottage Rear Door (no storm)**
- 6/6 Gridded Vinyl Windows
- 2" Mini Blinds Throughout
- 6 Panel White Interior Doors
- 2-Mortised Hinges
- Brushed Nickel Round Knobs
- 3 Side Door Stop

### HEATING / PLUMBING / ELECTRICAL

- Aluminum Heat Ducts
- Electric Furnace
- In-Line Floor Registers
- 100 AMP Service
- (1) Exterior Recept
- All Copper Wiring
- Plumb for Washer
- Wire for Electric Dryer
- Washer/Dryer Shelf
- PEX Water Lines
- 30 Gallon Electric Water Heater
- (1) Frost Free Exterior Faucet
- Main Water Shut Off
- **Water Shut-Offs Throughout**
- Furnace Door

VBP=Varies by plan

Note: Atrium door and patio door will no longer come standard with grids

Due to continuous product development and improvement, prices, specifications and material are subject to change without notice or obligation. Square footage and other dimensions are approximate. Included images are artist renderings and are not intended to be an accurate representation of the homes. Renderings and floorplans may be shown with optional features and / or third party additions that may not be available in all regions or situations. Exterior renderings may include onsite builder-built options not offered by Champion Home Builders, Inc.



308 Sheridan Drive | Topeka, IN 46571

[www.redmanhomesofindiana.com](http://www.redmanhomesofindiana.com)

CHAMPION®

MANUFACTURED BEAUTIFULLY™