



OPTION BROCHURE



DORMERS



Eyeblink Dormer



16' Dormer
Also Available in 20'



20' Dormer with Drop Gable and Bump Out



6' Dormer



6' Set Back Dormer

EXTERIORS



Shake at Front Door w /
Dormer & Corbels



Clay Exterior
Clay Vinyl Windows
Clay Fascia / Soffit
Clay 6 Residential Craftsman Front Door
Clay 6 Panel Residential Rear Door
Black Aluminum Torch Lights
(shown with optional 16' Dormer)



Optional 8' Porch (VBP)

EXTERIORS

Singlewide Elevation #3
(Shown with Optional 6' Dormer)



D 27 Dormer
D13 Dormer
Vertical Board & Batten



Box Out Bay
on Hitch End

MODULAR EXTERIORS

10' Drop Eave Door with
Azek Trim and Corbels



20' Ship Loose Dormer with Azek Trim
(2) Bump Outs with Shake and Drop Eave Dormers
(7/12 Roof Pitch Only)



20' Ship Loose Dormer
10' Drop Eave Dormer with Corbels
Vertical Siding



10" Cantilever Bay with
10' Drop Eave Dormer

EXTERIOR DOORS



9 Lite Residential Door



6 Panel Residential Door



Craftsman Front Door



Atrium Door
(drapes provided by others)



Patio Door

WINDOWS



8 x 30 Transom Window



Arch top Window
(Available in Kitchen and
Master Bath)



30 x 36 Window



14 x 40
Vinyl Window



Mini Picture Window



16 x 60 Transm Window

APPLIANCES



18 CF Over/Under
Refrigerator



21 CF Over/Under
Refrigerator



21 CF Side by Side
Refrigerator



Dishwasher



Over The Range Microwave

APPLIANCES



Self Clean Gas Range



Standard Clean Gas Range



Smooth Top Electric Range



Standard Electric Range

APPLIANCES



Shown with Optional Ceramic Between Range Hood and Ceiling

Ultimate Kitchen 2 (shown with package 1)

26CF Stnl Stl French Door Refer w/ Ice & Water, Built In Stnls Stl Microwave Trim Kit (Slim), Black Electric Cook Top, Built In Stnl Stl Oven, Stnl Stl Dishwasher, Stnl Stl Slim Range Hood, Chimney Extension, 30" Stnl Stl Farm Sink, Brushed Nickel Cabinet Hardware 6" & 10" Handles, Single Lever Goose Neck Faucet w/Spray, Pot Filler Faucet, Up To 6 Can Lights, 12" Under Cabinet Lighting, Up To 4, 2 Mini Recessed (Puck) Lights Under Each Decorative Shelf, USB Receptacle, Up To 4 Beaded Glass Overhead Doors, Decorative Shelf Per Print, Convenience Cabinet w/ Recept, 2 Pot & Pan Drawer, White Subway Tile & Trim Inlay Over Cook Top, Full Wall Tile On Range Wall, Crescent Edging, Overhead Bottom Cabinet Stile Trim, Overhead Cabinet Cove Stile Trim, Stile Trim At Kitchen Window, Lined Overhead Cabinets w/ Adjustable Shelves



Shown with Optional Tray Ceiling

*Available on Modular Only (9' Sidewall Required)

APPLIANCES



Ultimate Kitchen 3

Available In Drywall Only & Must Option Hardwood Cabinets & Stiles

21CF Stainless Steel Side by Side Refer, Built In Stainless Steel Microwave, Microwave Trim Kit, Stainless Steel Electric or Gas Slide In Range (No Back Control Panel), Stainless Steel Dishwasher, Stainless Steel Euro Range Hood, 30" Stainless Steel Farm Sink w/ Accessories, Brushed Nickel Cabinet Hardware - 6" & 10" Handles, Single Lever Goose Neck Faucet w/ Sprayer - Brushed Nickel w/ Black Accent, Bi-Fold Lifter Cabinets Per Print, Ribbed Glass Door on Each Bi-Fold Lifter, 4 Stainless Shelves, Pot & Pan Drawer Under Microwave, Drawers Over Doors, Up To 6 Can Lights, Dimmer Switch, LED Puck Light at Each Glass Door Cabinet, LED Puck Lights Under Window Shelf, Ceramic Tile Backsplash on Range Wall to Bottom of Floating Shelves All Other Walls - One Row Ceramic Tile OR Two Rows Subway Tile Stainless Steel Backsplash w/ Wire Shelf Behind Range, Crescent Edging, Overhead Craftsman Stile Cove, Overhead Craftsman Stile Bottom Trim, Stile Trim At Kitchen Window, Base Center Shelves, Lined Overhead Cabinets w/ Adjustable Shelves



CABINETS



081 Kitchen Island with Optional Dishwasher



Utility Base & Overhead (VBP)



Utility Sink (VBP)



004 64" Hutch



013 Kitchen Island

CABINETS



Furniture Style Master Bath Vanity



Large Butler Pantry (BP01)



59" Hutch



Washer / Dryer Cabinets

Creston Oak Hardwood Cabinets



Urban Putty Cabinets



Destin White Cabinets



Ozark Shadow Cabinets



BACKSPLASH & EDGE



Full Wall Marbre Gray Back-
splash from Countertop to Ceiling
Shown with Subway Tile Inlay
from UK2



Plant Made Backsplash
(matches countertop)



Crescent Edging



Basalto Black Backsplash



Marbre Grey Backsplash



Canyon Mosaic
Optional Countertop to Ceiling
Shown Above

BATHROOMS

Serenity Shower
Shown with Optional 1/2 Glass Wall



3 Sided Agile Shower



Vanity with 1/2 Stack
Linen

BATHROOMS



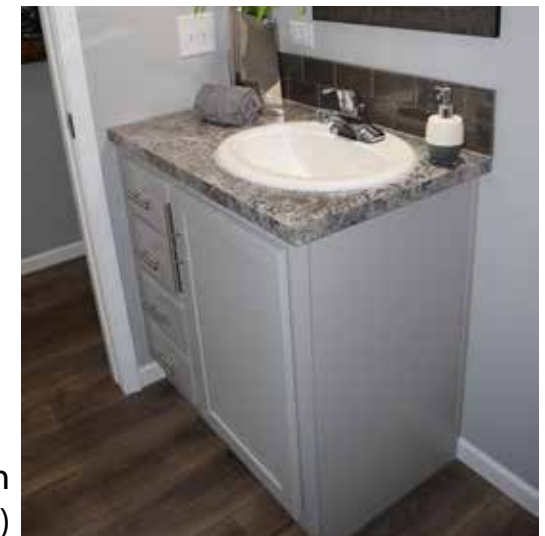
One Piece Fiberglass Tub/Shower Combo



60" Fiberglass Shower with Optional Pivot Door



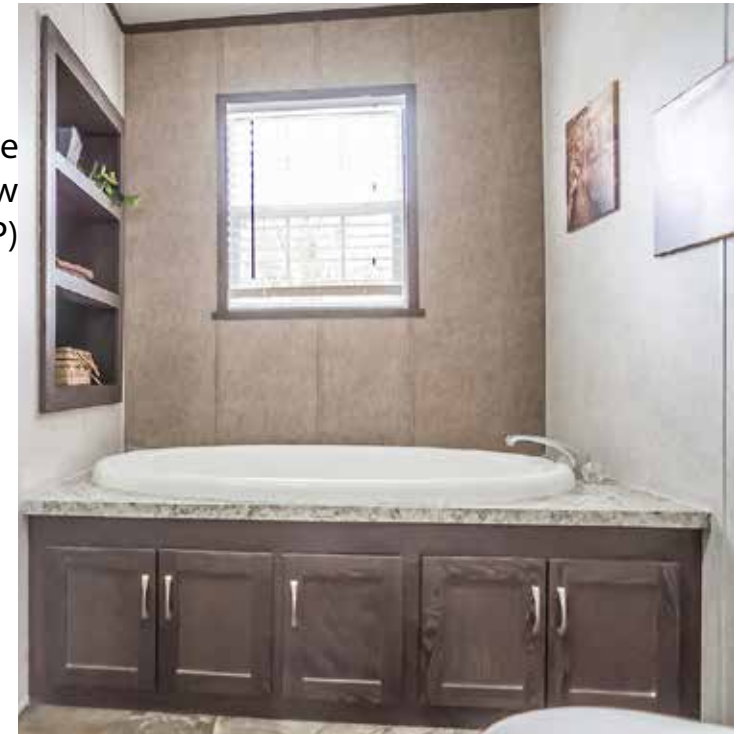
Corner Tub (VBP)



Hall Bath Vanity with Drawer Bank (VBP)

BATHROOMS

Deck Tub with Alcove
and 30x36 Window
(VBP)



Suite Retreat Tub with Alcove and
Optional Ship Lap (VBP)



Ceramic Shower with
Optional Rain Shower Head



Corner Deck Tub and Archtop Window
(VBP)

RADIANT SPA BATH



Agile Panel Shower w/ 2 Sided Glass
Shower Tower
8" Corner Shelf
Free Standing Tub & Tub Faucet
98" Vanity w/ Lav Tower
2 Square Lav Bowls w/ Single Lever Euro Faucets
2 - 2-Arm Bath Vanity Lights
Framed Mirror
Three 24x48 Windows w/ Plantation Shutters
Built In Cabinets
Cantilever Bump-Out
UK2 6" Handles

RADIANT SPA BATH



INTERIOR



1/2 Wall with Cap at
Foyer



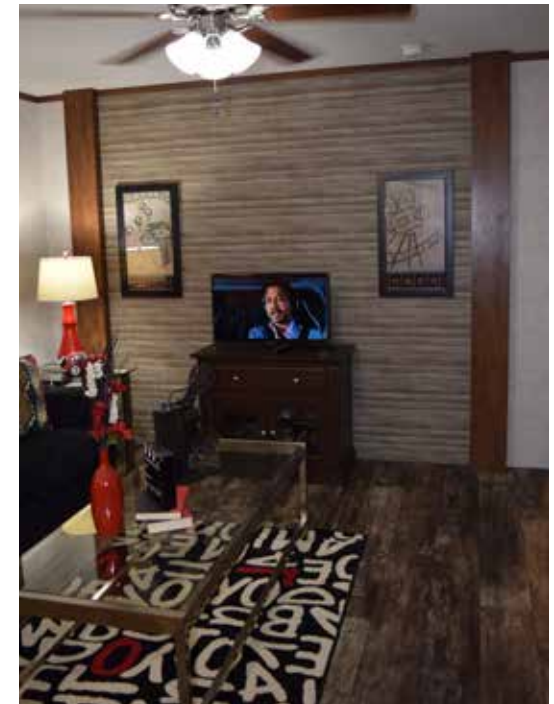
Wood Panel Box Cover



Closet Organizer



Ship Lap



Feature Wall

INTERIOR



2 Tier Soffit with Can Lights



Framed Mirror



Entertainment Center with Ship Lap, Can Lights
and Fixed Glass Windows



Arch Walk-Way with Columns

INTERIOR



2 Panel Interior Doors



Metal Bi-Fold Doors



Barn Door

INTERIOR



Floating Vanity
(shown with Optional Ship Lap and
Under Cabinet Lighting)



Floating Cabinet with Plant Shelf
Available on Modular Only
(9' Sidewalls required)



Room Divider with Shelves and Cabinets



Stem Lights with Seeded Glass

Due to the continuous product development and improvement, prices, specifications and materials are subject to change without notice or obligation. Square footage and other dimensions are approximate. Exterior images may be artist renderings and are not intended to be an accurate representation of the home. Renderings, photos and floor plans may be shown with optional features or third-party additions.



308 Sheridan Drive
Topeka, IN 45671
www.championhomes.com