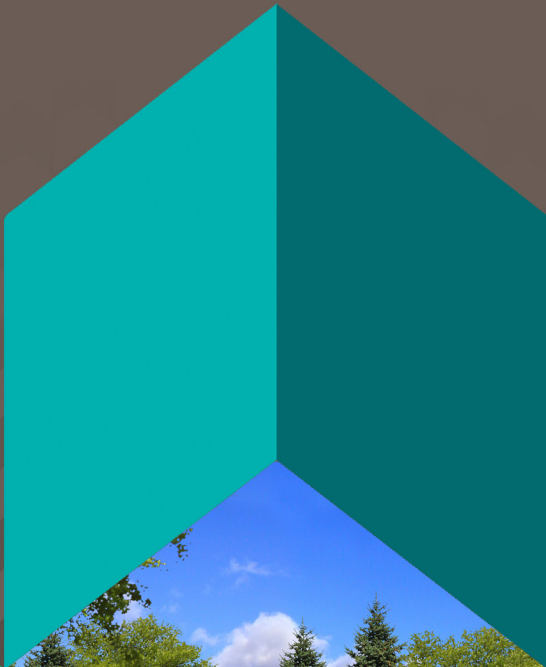


REDMAN  HOMES.®

GENESIS SERIES





REDMAN HOMES

ONE OF THE OLDEST AND MOST RESPECTED HOMEBUILDERS IN AMERICA.

Founded in 1937, Redman pioneered factory home construction and continues to lead advances in quality control, design and home value today. Through experience and innovation we've harnessed production line efficiency and, paired with our high-quality craftsmanship, created a process that delivers homes that meet our superior standards.

A place to call your own

Beyond just building you a house, we're committed to providing you and your family with a home to make memories in that will last a lifetime. Somewhere you can feel secure. A place you can call your own.

A home that fits your lifestyle and has your own personal touch. Whether you're an active young family constantly on the go or empty nesters ready to simplify, just relax we have a home that's right for you.

More choice, more freedom

Our vast selection of floor plans, color choices and options give you the freedom to express your personal style and fit your home around your life. Using our online Kitchen Designer, it's easy to create the kitchen of your dreams.

Building the best

We build each and every home to meet or exceed a strict national or state building code, and we set even higher standards for ourselves. Focusing on the things you don't see as well as the things you do, we monitor and inspect our homes at every stage of construction. From the plumbing system to the electrical wiring, from the kitchen cabinets to the closets in the bedrooms – every home we build undergoes rigorous quality inspections to ensure we're providing you with nothing but our best.

The quality you expect

To build the best, we use the best. To meet your expectations of quality-and ours-we use only the highest-quality building materials and trusted national brand names. From insulation and fixtures to flooring and appliances, we only buy components from suppliers who share our commitment to quality. By using the best, we're confident we can build you a home with the lasting value you'll appreciate for years to come. Your housing consultant can tell you more about the specific brands used in our homes.



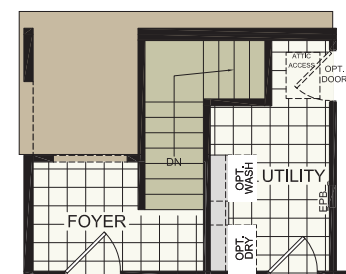
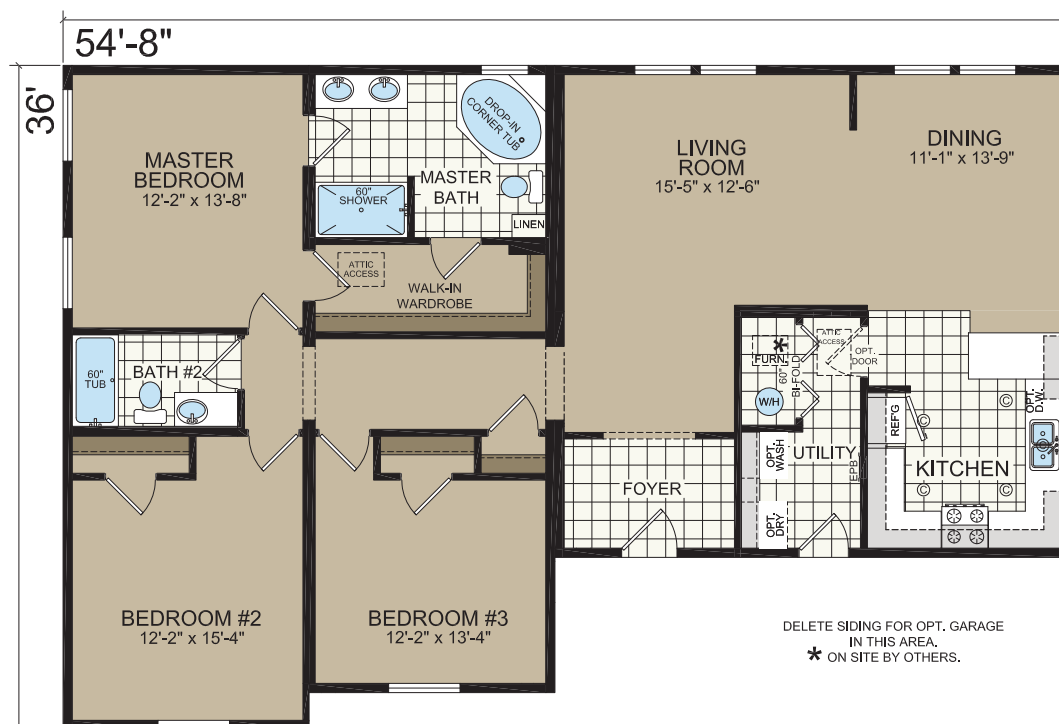
THE CHARLESTON

36' x 54'8" | 3 bed-2 bath | 1638 sq.ft.



Shown with Site-Built Garage by Others

RM4003



OPTIONAL BASEMENT

* FURNACE, WARM & RETURN AIR DUCTS N/A WITH THIS MODEL. ON-SITE BY OTHERS

* DESIGNATES FIELD WORK

THE DAWSON

30' x 64' | 3 bed-2 bath | 1754 sq.ft.

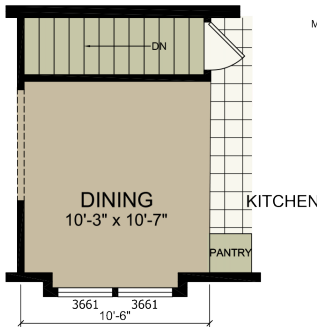


RM1023

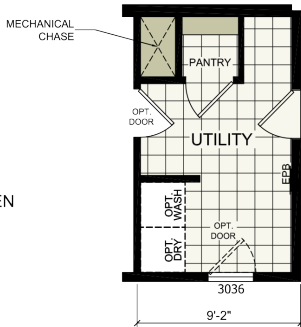


* FURNACE, WARM & RETURN AIR DUCTS N/A WITH THIS MODEL.
ON-SITE BY OTHERS

* DESIGNATES FIELD WORK



OPTIONAL STAIRWELL



OPTIONAL MECHANICAL CHASE
* (FURNACE & W/H ON-SITE BY OTHERS)

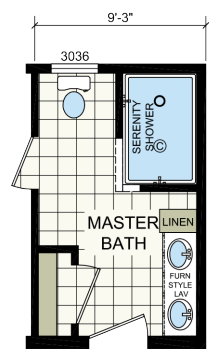
THE MILO

30' x 60' | 3 bed-2 bath | 1787 sq.ft.

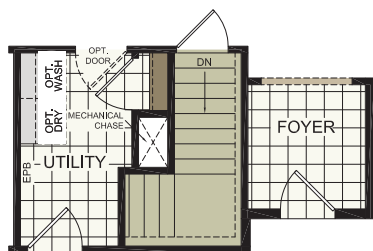


Shown with Site-Built Garage by Others

RM1025



OPTIONAL SERENITY SHOWER



OPTIONAL STAIRWELL

OPTIONAL 10" CANTILEVER BAY WINDOW

* FURNACE OPTION INCLUDES WARM AIR DUCTS IN THE FLOOR AND RETURN AIR DUCTS IN THE CEILING

* DESIGNATES FIELD WORK

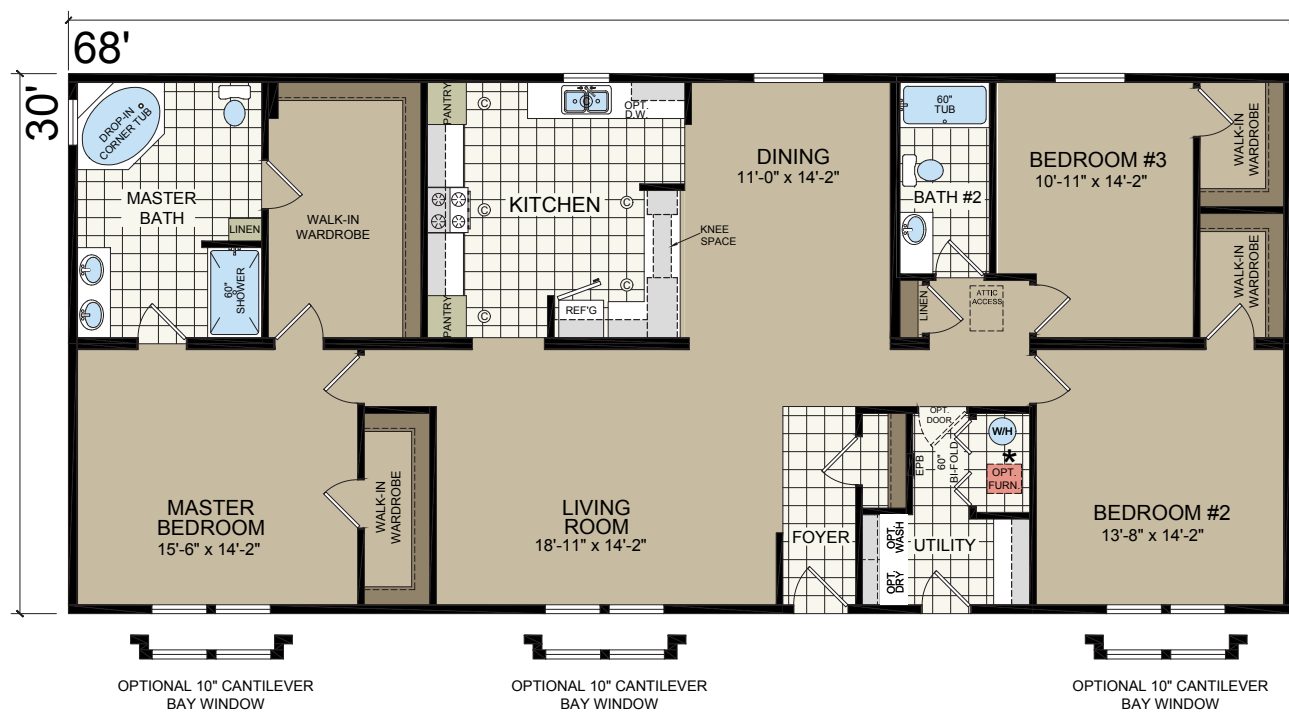
* (FURNACE, W/H & WARM AIR DUCTS ON-SITE BY OTHERS)

30' x 68' | 3 bed-2 bath | 2040 sq.ft.

30' x 68' | 3 bed-2 bath | 2040 sq.ft.



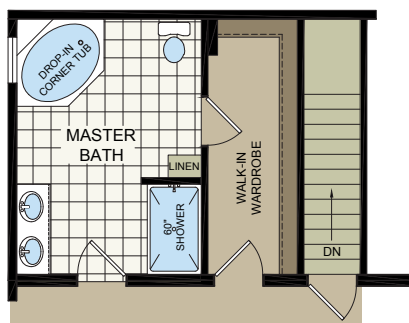
RM1031



OPTIONAL 10" CANTILEVER
BAY WINDOW

OPTIONAL 10" CANTILEVER
BAY WINDOW

OPTIONAL 10" CANTILEVER
BAY WINDOW



OPTIONAL BASEMENT

* (WARM AIR DUCTS SHIPPED LOOSE WITH BASEMENT OPTION)

* FURNACE OPTION INCLUDES WARM AIR DUCTS IN THE FLOOR AND RETURN AIR DUCTS IN THE CEILING

* DESIGNATES FIELD WORK

43'-4"

68'

MASTER BEDROOM
19'-6" x 14'-2"

MASTER BATH
ORIGINAL CORNER TUB
8" SHOWER
LINEN
WALK-IN WARDROBE

LIVING ROOM
18'-11" x 14'-2"

DINING
11'-0" x 14'-2"

KITCHEN
REFRIG
SINK
WALK-IN PANTRY
KNEE SPACE

FOYER
OPT. LINEN CLOSET
OPT. LAUNDRY ROOM
OPT. FURNACE
OPT. WATER HEATER

UTILITY

BEDROOM #2
13'-8" x 14'-2"

BATH #2
80" TUB
OPT. LINEN CLOSET

BEDROOM #3
11'-0" x 14'-2"

WALK-IN WARDROBE

WALK-IN CLOSET
OPT. FOLDING TABLE
13'-0" x 11'-2"

OPT. WINDOW SEAT

OPTIONAL 10" CANTILEVER BAY WINDOW

OPTIONAL 10" CANTILEVER BAY WINDOW

[illegible]

FIRST FLOOR

Overall Dimensions: 68' x 58'-4"

- BREAKFAST AREA: 29'-0" x 14'-2"
- FAMILY ROOM
- DINING: 11'-0" x 14'-2"
- KITCHEN: Includes REFRIG., SINK, STOVE, PANTRY, and CLOSET.
- LIVING ROOM: 18'-11" x 14'-2"; Includes FIREPLACE and PORCH ACCESS.
- MASTER BEDROOM: 19'-6" x 14'-2"; Includes WALK-IN CLOSET and MASTER BATH.
- BEDROOM #2: 13'-8" x 14'-2"; Includes WALK-IN WARDROBE.
- BEDROOM #3: 10'-11" x 14'-2"; Includes WALK-IN WARDROBE.
- BATH #1 (Master), BATH #2, and HALF BATH.
- UTILITY: Includes LAUNDRY and STORAGE OPTIONS (OPT. CANTILEVER BAY WINDOW, OPT. FOLDING TABLE).
- PORCHES: FRONT PORCH, BACK PORCH, and SIDE PORCH.

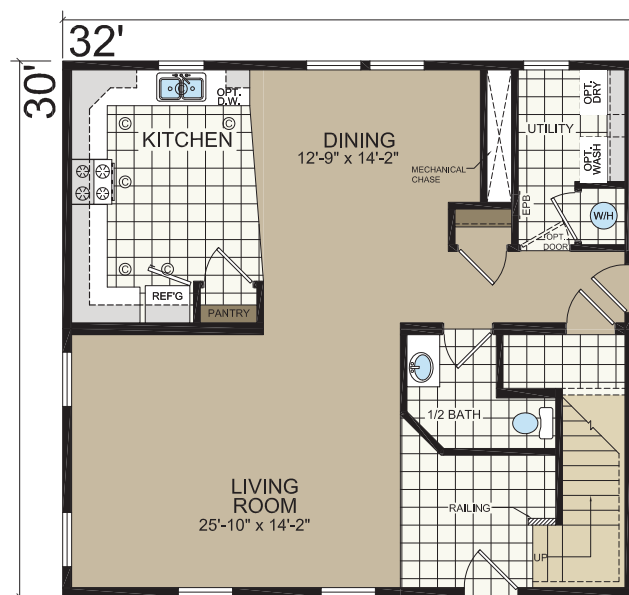
THE BRISTOW

30' x 32' | 3 bed-2.5 bath | 1920 sq.ft.

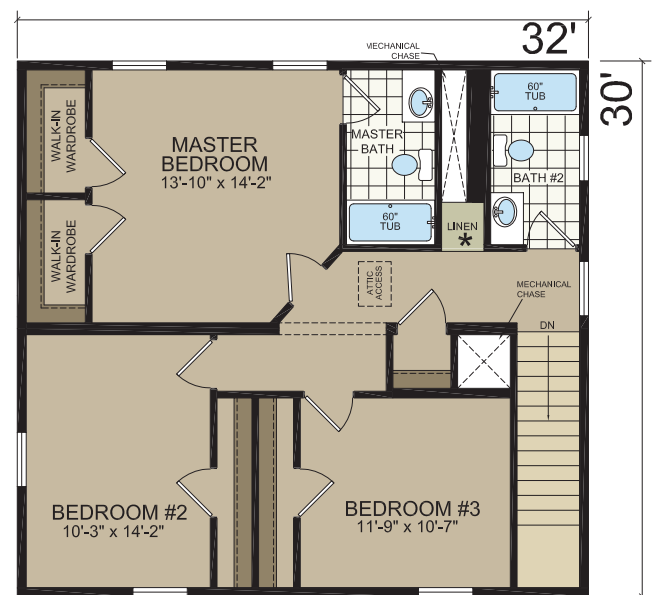


Shown with Optional Elevation and Site-Built Garage by Others

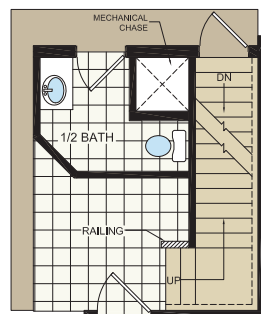
RM2007



1ST FLOOR



2nd FLOOR



OPTIONAL BASEMENT

* FURNACE, WARM & RETURN AIR DUCTS N/A WITH THIS MODEL. ON-SITE BY OTHERS

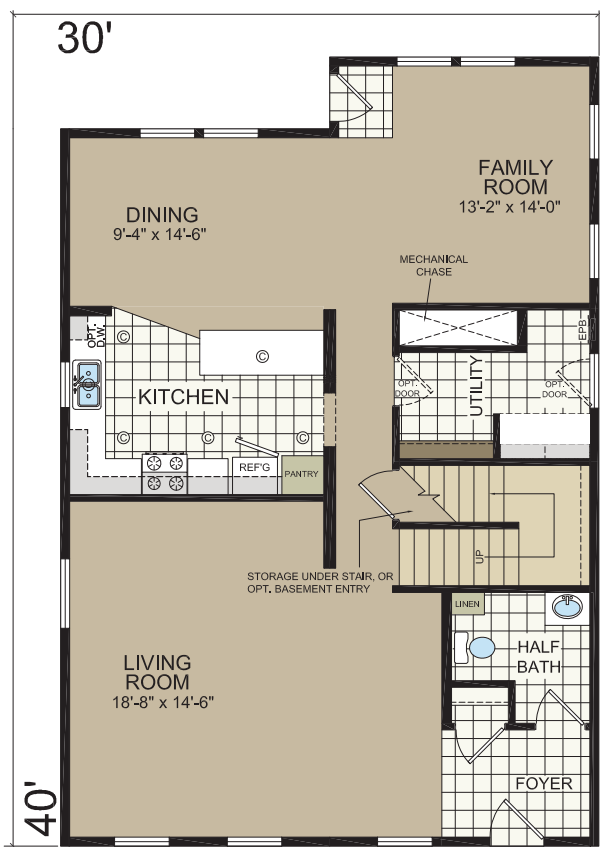
* DESIGNATES FIELD WORK

THE FITZGERALD

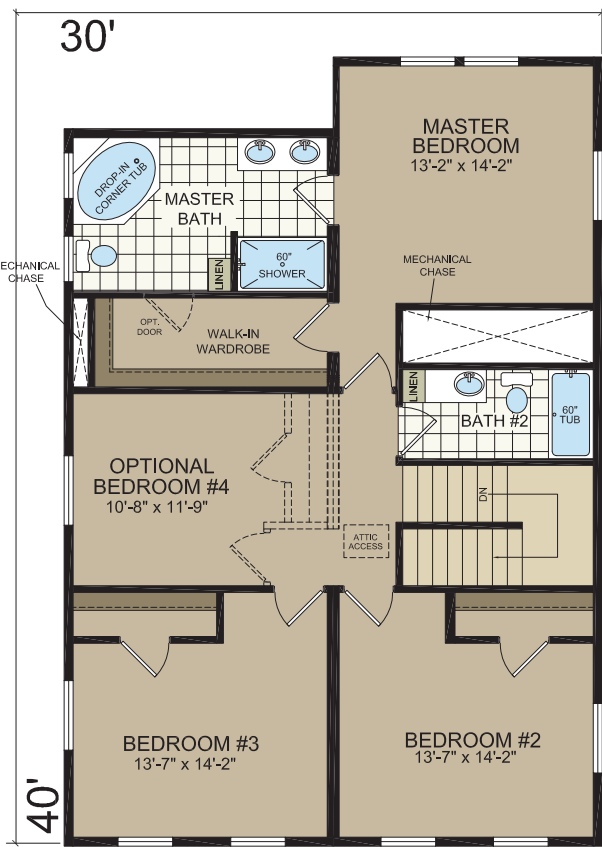
40' x 30' | 3 bed-2.5 bath | 2520 sq.ft.



RM2001



1ST FLOOR



2nd FLOOR

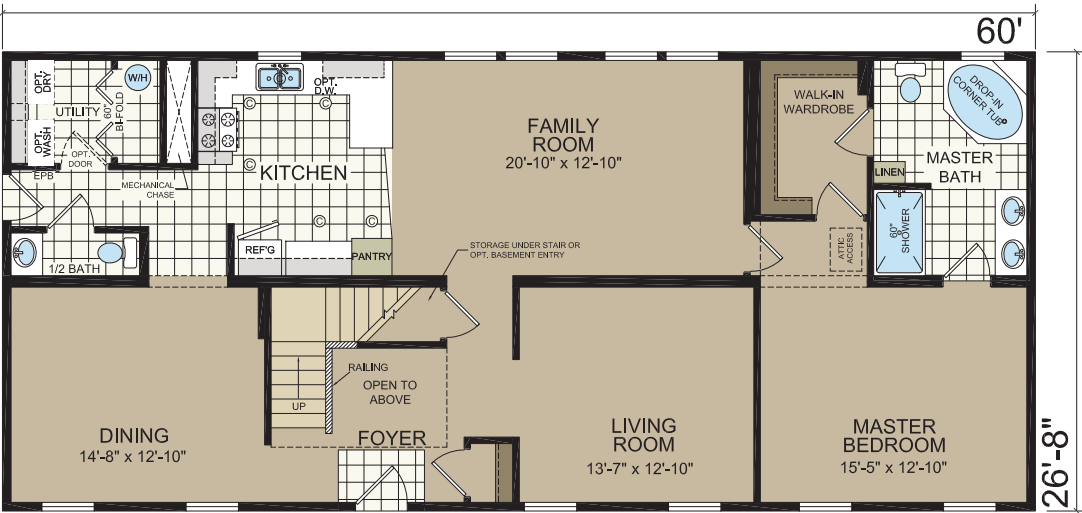
THE ASHVILLE

26'8" x 60' | 4 bed-3.5 bath | 2842 sq.ft.

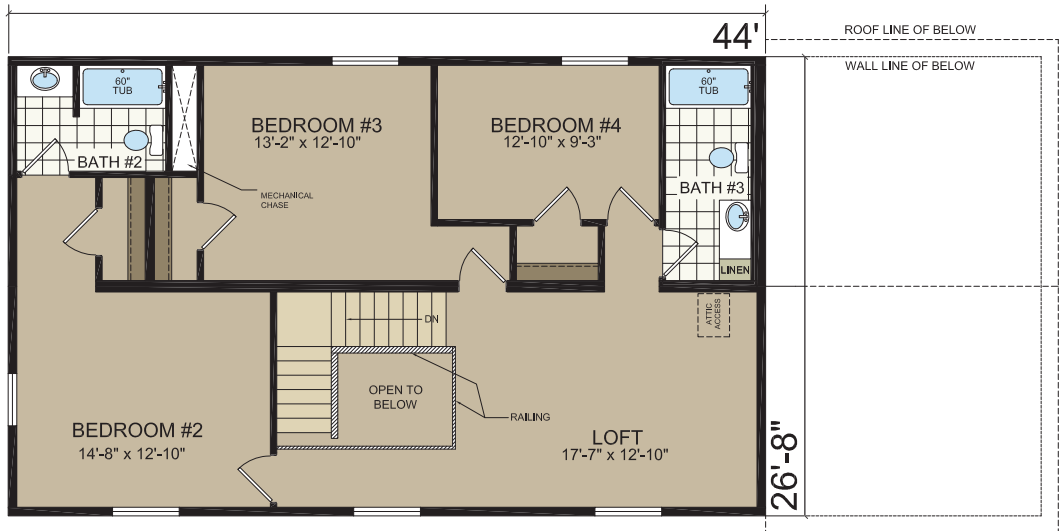


Shown with Optional Elevation and Site Built Garage by Others

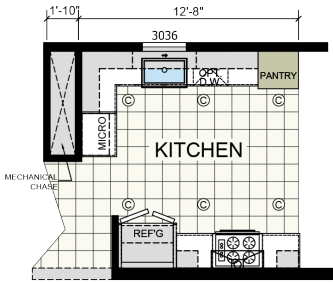
RM2005



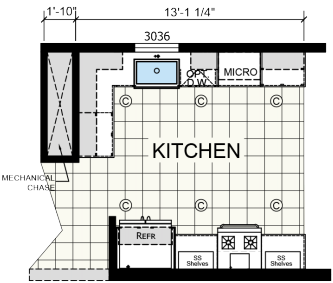
1ST FLOOR



2nd FLOOR



OPTIONAL ULTIMATE KITCHEN 2



OPTIONAL ULTIMATE KITCHEN 3



GENESIS II SERIES MODULAR

STANDARD FEATURES

FRAMES & FLOORS

- Open-Web Joist Floor 19.2" O.C.
- 19/32" 4 x 8 OSB Floor Decking
- Double 2 x 10 Rim Joist /
- LVL Marriage Line Rim Joist
- Perimeter Registers w/ 6" Round Boots
- 16 oz. Plush Carpet
- 5 Lb Rebond Carpet Pad
- Linoleum in Wet Areas & Foyer

EXTERIOR

- 2 x 6 Wall Studs / 16" O.C.
- R-19 Insulation
- 7/16" OSB Sheathing
- House Wrap
- Double Dutch Lap 4" Vinyl Siding
- 15" Raised Panel Shutters-Doorside

EXTERIOR DOORS & WINDOWS

Vinyl Single Hung, Low "E" w/ Grids

- 36 x 80 White 6 Panel w/ Storm-Front Door
- White 6-Panel Fire Rated-Rear Door
- Nickel Lockset with Deadbolt

CEILING & ROOF

- 8' Flat Ceilings w/ Stomped Textured Finish
- 5/12 Roof Pitch STD on 26' & 28' Wides
- 7/12 Roof Pitch STD 30' Wide
- R-40 Cellulose Insulation
- 7/16" OSB Roof Sheathing
- 30 Yr. Fiberglass Dimensional Shingles
- 12" Vented End walls Eaves
- 12" Eaves-Sidewall 30' Wide
- Steel Fascia Trim
- Fully Vented Vinyl Soffit
- Roof Load Meets or Exceeds State Requirements

INTERIOR WALLS & DOORS

- 2 x 4 24" O.C.
- 2 x 6 Plumbing Walls
- 1/2" Drywall T/O
- Wood Tone 6 Panel Int Doors to Match Cabs
- Nickel Round Knobs / 3 Mortised Hinges
- Metal Bi-Fold-VBP @ Furnace, Water Heater
- Hardwood Door and Window Casing
- Hardwood Base Moulding
- Wrapped MDF Jamb-Door / Window
- Hardwood Door Stop
- 2 x 4 16" O.C. Marriage Wall
- Finished Ceiling Joints T/O
- 3 Mortised Hinges on All Interior Doors

HEATING & PLUMBING

- 40 Gallon Electric Water Heater
- Main Water Shut-Off @ Water Heater
- Water Shut-Offs @ All Fixtures
- PEX Water Lines
- Schedule 40 PVC Drain / Vent Lines
- (1) Frost Free Exterior Faucet with Shut-Off Per Print
- Plumb for Washer-Per Plan
- Cold Air Returns-**House without furnace

ELECTRICAL

- 200 AMP Service w/ 30/40 Box
- 12/2 Copper Wire Thru Out
- Wire for Dryer
- Smoke Detectors-All Bedrooms & LR
- GFI Recept-Kitchen, Baths, (2) Exterior
- Black Lantern Light-All Exterior Doors
- Can Lights Over Cabinets & Island in Kitchen
- 1 Phone Jack-Standard

CABINETRY

- Hardwood Flat Panel Cabinets
- 1/2" Cabinet End Panels
- Hidden Hinges
- Countertops-Hi Pressure Laminate w/ Self Edge
- Laminate Backsplash
- 3/4" Hardwood Stiles
- Grooved End Panels
- 3/4" Adjustable Shelving
- 1-3/4" Cabinet Cove
- Pantry w/ Lazy Susan & Roll-Out Shelf-VBP-(Kit)
- Kitchen Island-VBP
- 1/2" Adjustable Center Shelf
- Nickel Handles
- Bottom Cabinet Trim
- 30" & 42" with Cubbies Overhead Cabinets
- Fluted Trim w/Top & Bottom Rosettes @ Cabinet Sink
- Full Length Corner Cabs with Glass Doors

KITCHEN & BATH

- 30" Deluxe Electric Range
- 18 CF Over/Under Refrigerator
- 30" Range Hood w/Charcoal Filter
- Stainless Steel Sink
- Ceramic Tile Between Range/Range Hood
- Staggered Cabinets
- Bottom Lip Molding
- Fiberglass Oval Drop-In (VBP)
- 48" or 60" 1-Piece Fiberglass Shower-VBP
- Pivot Shower Door-VBP
- Elongated China Commode
- China Lavs
- Lighted Bath Vents
- Eave Vent w/ Side Discharge
- Ceramic Tub/Shower Trim

ADDITIONAL

- Full Length Drape & Rod in LR, DR, FR
- Valances-Kitchen / MBR / MBATH
- 2" Vinyl Mini Blinds T/O
- Wooden Valance Board above Kitchen Window
- DR Chandelier w/Globe
- Platinum Light Package
- Wire Closet Shelving

VBP=Varies by plan

Due to continuous product development and improvement all prices, specifications and material are subject to change without notice or obligation. Square footage and other dimensions are approximate. Included images are artist renderings and are not intended to be an accurate representation of the homes. Renderings and Floor Plans may be shown with optional features and / or third party additions that may not be available in all regions or situations. Exterior Renderings may include onsite builder built options not offered by Champion Home Builders, Inc.



308 Sheridan Drive
Topeka, IN 46571

www.Redmanhomesofindiana.com

CHAMPION®

MANUFACTURED BEAUTIFULLY™