



# ADVANTAGE MODULAR SERIES

REDMAN  HOMES.®

A modern kitchen featuring light grey shaker-style cabinets with silver handles. A stainless steel refrigerator is built into the cabinetry. To the right, open stainless steel shelves hold glass bottles, jars, and a stack of white dishes. The countertop is a speckled grey material, and the backsplash is made of dark blue subway tiles. The floor is made of light-colored wood-look planks. A large green diagonal overlay covers the left side of the image, containing white text.

Over the years, we've built more than just homes. We've built homebuyer trust in our ability to satisfy their needs and we're confident we can provide you with a home that will meet your needs and exceed your expectations.









# ABOUT US

**Redman Homes is one of the oldest and most respected homebuilders in America. Founded in 1937, Redman pioneered factory home construction and continues to lead advances in quality control, design and home value today. Through experience and innovation we've harnessed production line efficiency and, paired with our high-quality craftsmanship, created a process that delivers homes that meet our superior standards.**

## **A place to call your own**

Beyond just building you a house, we're committed to providing you and your family with a home to make memories in that will last a lifetime. Somewhere you can feel secure. A place you can call your own. A home that fits your lifestyle and has your own personal touch. Whether you're an active young family constantly on the go or empty nesters ready to simplify, just relax – we have a home that's right for you.

## **Building the best**

We build each and every home to meet or exceed a strict national or state building code, and we set even higher standards for ourselves. Focusing on the things you don't see as well as the things you do, we monitor and inspect our homes at every stage of construction. From the plumbing system to the electrical wiring, from the kitchen cabinets to the closets in the bedrooms – every home we build undergoes rigorous quality inspections to ensure we're providing you with nothing but our best.

## **More choice, more freedom**

Our vast selection of floor plans, color choices and options give you the freedom to express your personal style and fit your home around your life. Using our online Kitchen Designer, it's easy to create the kitchen of your dreams.

## **The quality you expect**

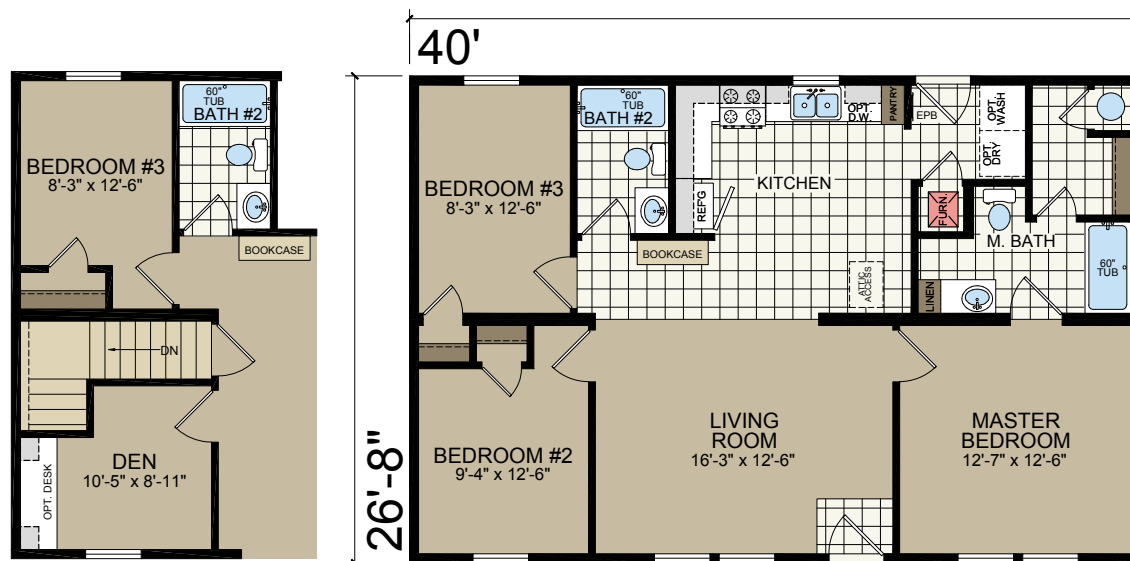
To build the best, we use the best. To meet your expectations of quality - and ours - we use only the highest-quality building materials and trusted national brand names. From insulation and fixtures to flooring and appliances, we only buy components from suppliers who share our commitment to quality. By using the best, we're confident we can build you a home with the lasting value you'll appreciate for years to come. Your housing consultant can tell you more about the specific brands used in our homes.

# MONROE

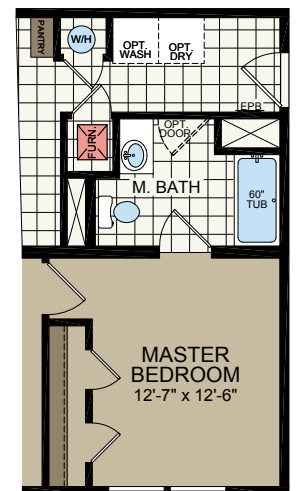
2844-201  
26' 8" x 40'  
3 bed-2 bath  
1067 sq. ft.



Shown with Optional Elevation, Site-built Porch and Garage by Others



OPTIONAL STAIRWELL



OPTIONAL REAR ENTRY

\* Designates field work

\*\* Insulated heat ducts are shipped loose and installed on-site by others

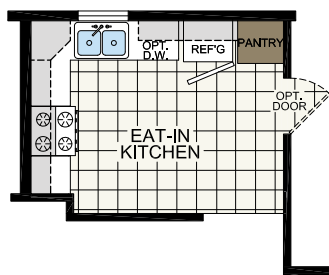
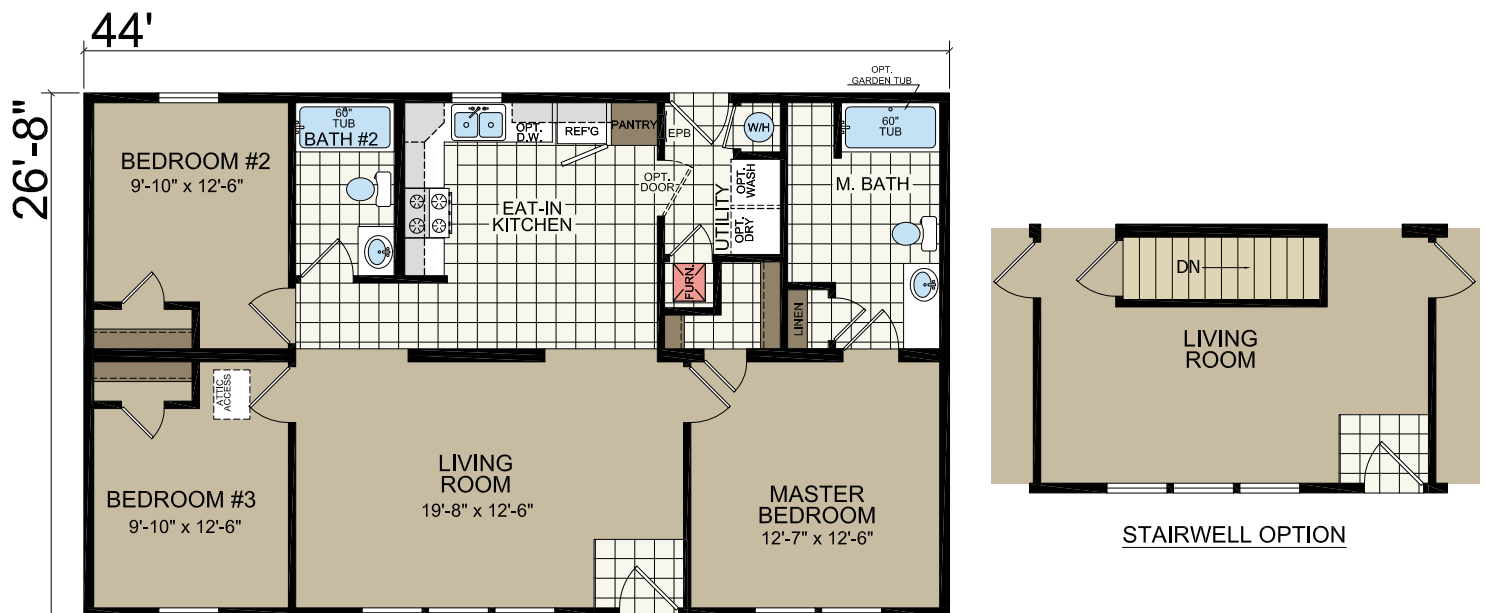


# HUDSON

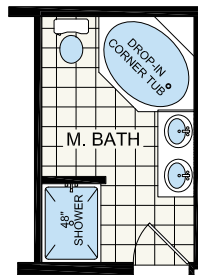
2848-201  
26' 8" x 44'  
3 bed-2 bath  
1173 sq. ft.



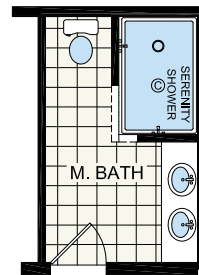
Shown with Optional Elevation, Site-built Garage by Others



KITCHEN OPTION



MASTER BATH OPTION



OPT SERENITY BATH

\* Designates field work

\*\* Insulated heat ducts are shipped loose and installed on-site by others

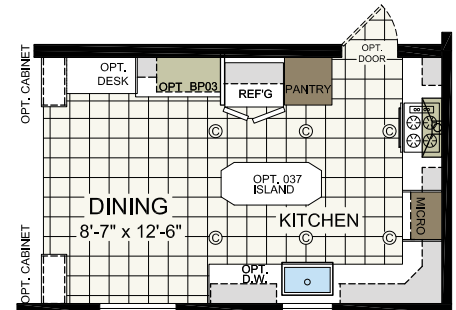
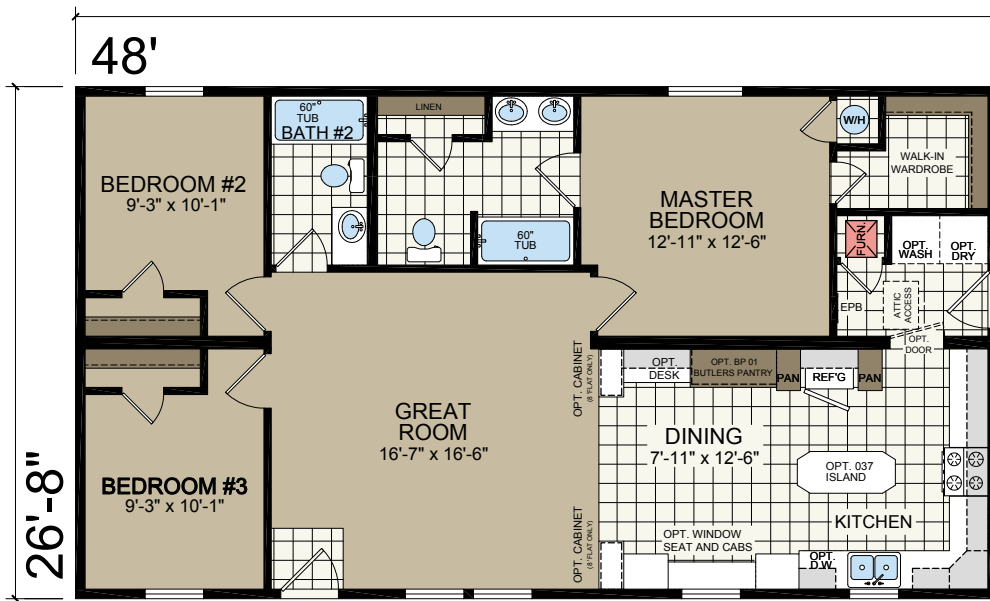


# BRIGHTON

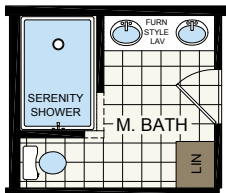
2852-215  
26' 8" x 48'  
3 bed-2 bath  
1280 sq. ft.



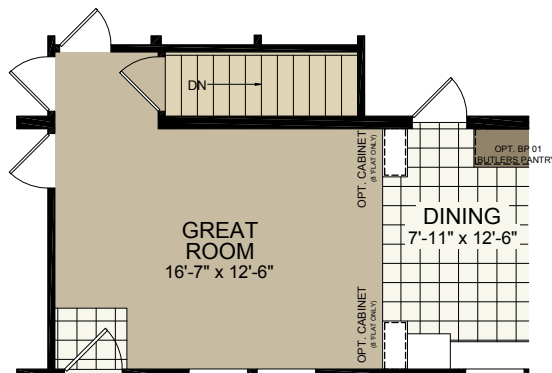
Shown with Optional Elevation



ULTIMATE KITCHEN 2



OPT SERENITY BATH



STAIRWELL OPTION

OPT. WINDOW SEAT AND CABS

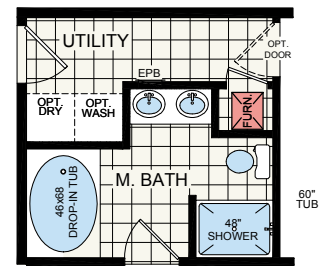
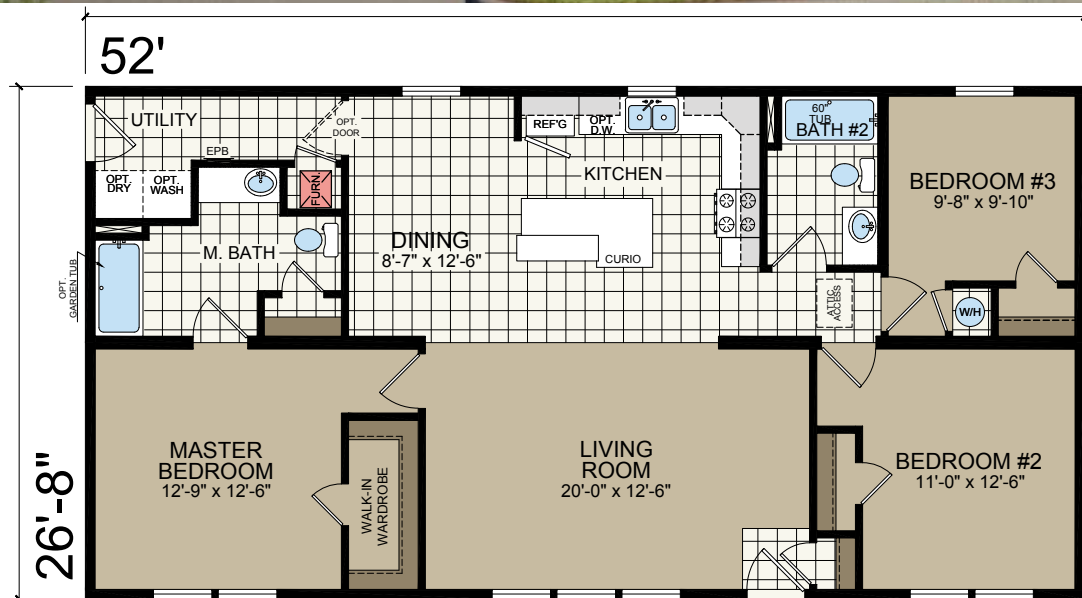
\* Designates field work  
\*\* Insulated heat ducts are shipped loose and installed on-site by others

# WARREN

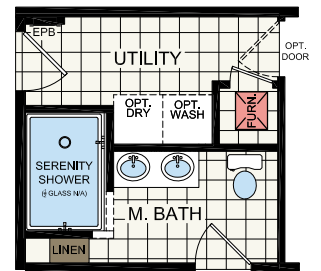
2856-201  
26' 8" x 52'  
3 bed-2 bath  
1387 sq. ft.



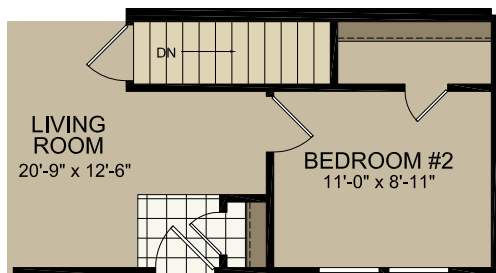
Shown with Optional Elevation, Site-built Porch and Garage by Others



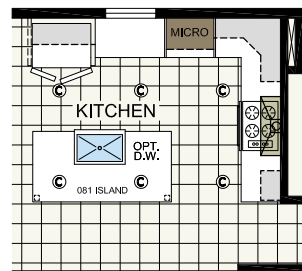
MASTER BATH OPTION



SERENITY SHOWER



STAIRWELL OPTION



OPTIONAL ULTIMATE KITCHEN 2

\* Designates field work

\*\* Insulated heat ducts are shipped loose and installed on-site by others

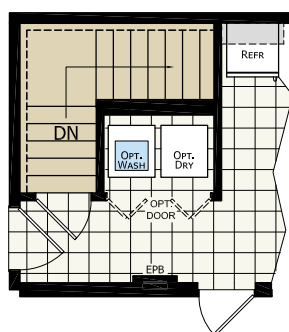
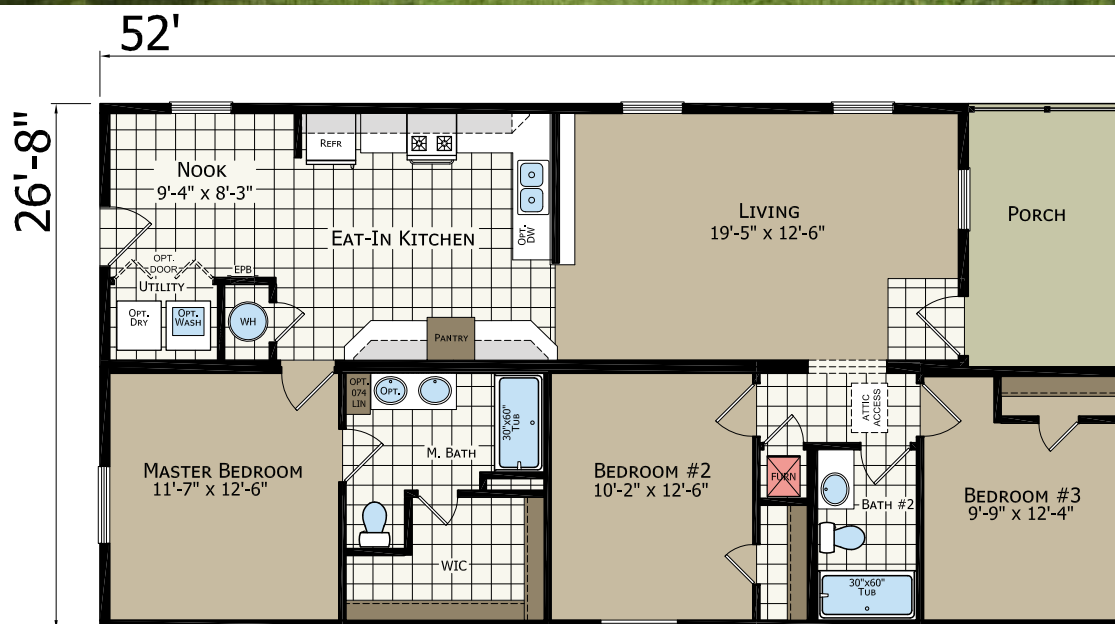


# PONTIAC

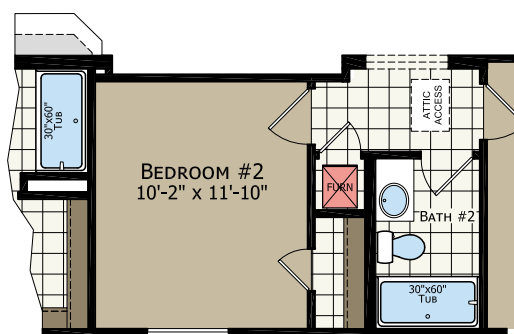
2856-241  
26' 8" x 52'  
3 bed-2 bath  
1279 sq. ft.



**Shown with Optional Elevation**



### OPTIONAL STAIRWELL



### OPTIONAL LIVING ROOM OFFSET

\* Designates field work

**\*\* Insulated heat ducts are shipped loose and installed on-site by others**



# PONTIAC

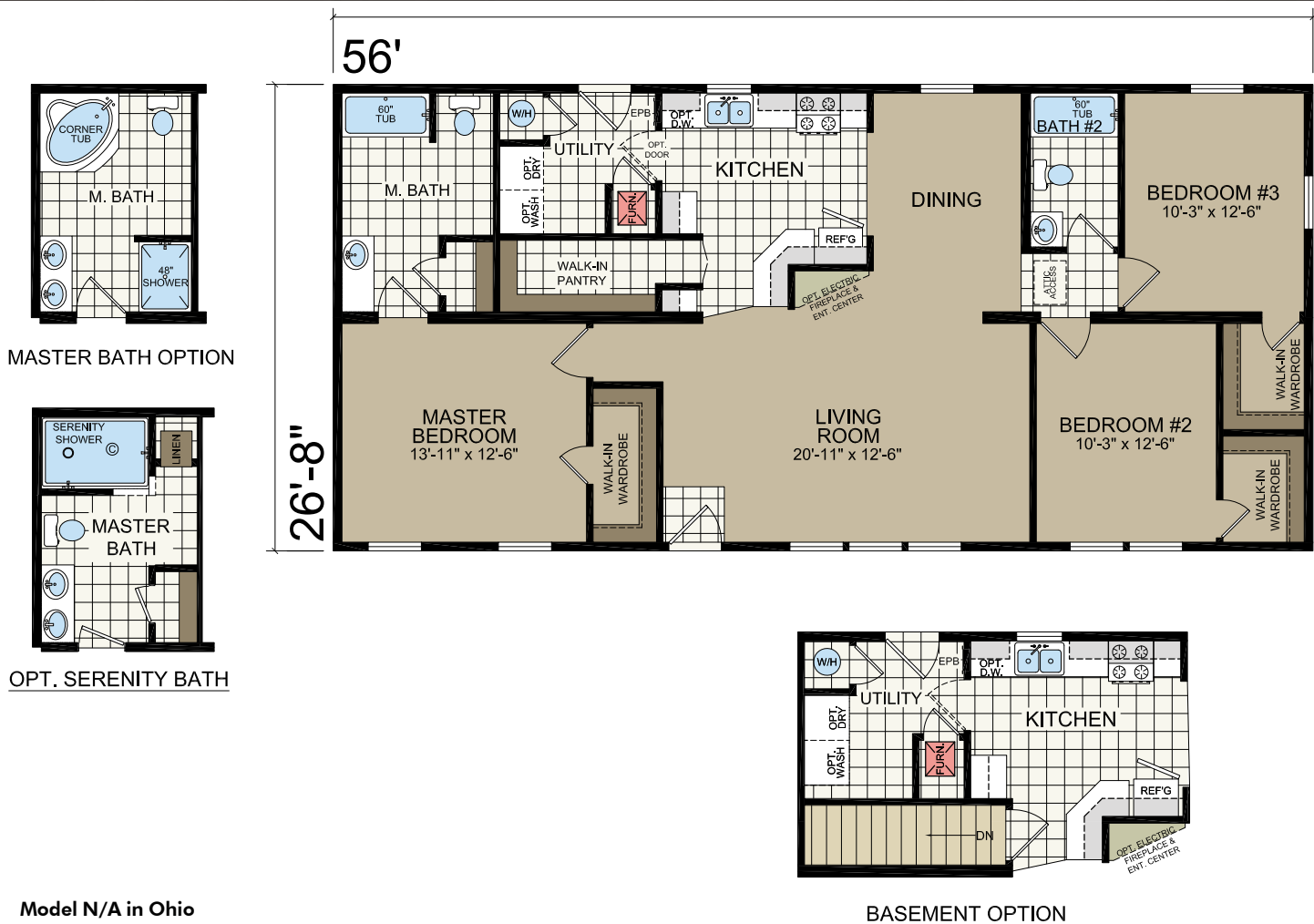


# HARRISON

2860-205  
26' 8" x 56'  
3 bed-2 bath  
1493 sq. ft.



Shown with Optional Elevation, Site-built Porch and Garage by Others



Model N/A in Ohio

\* Designates field work

\*\* Insulated heat ducts are shipped loose and installed on-site by others

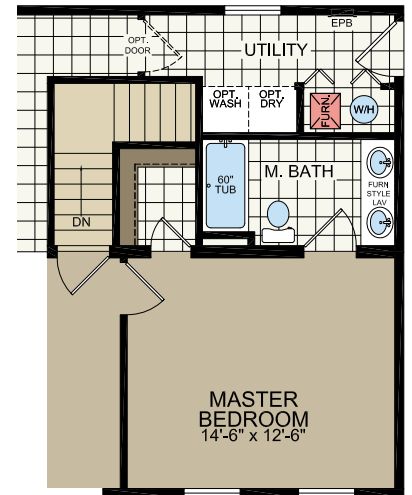
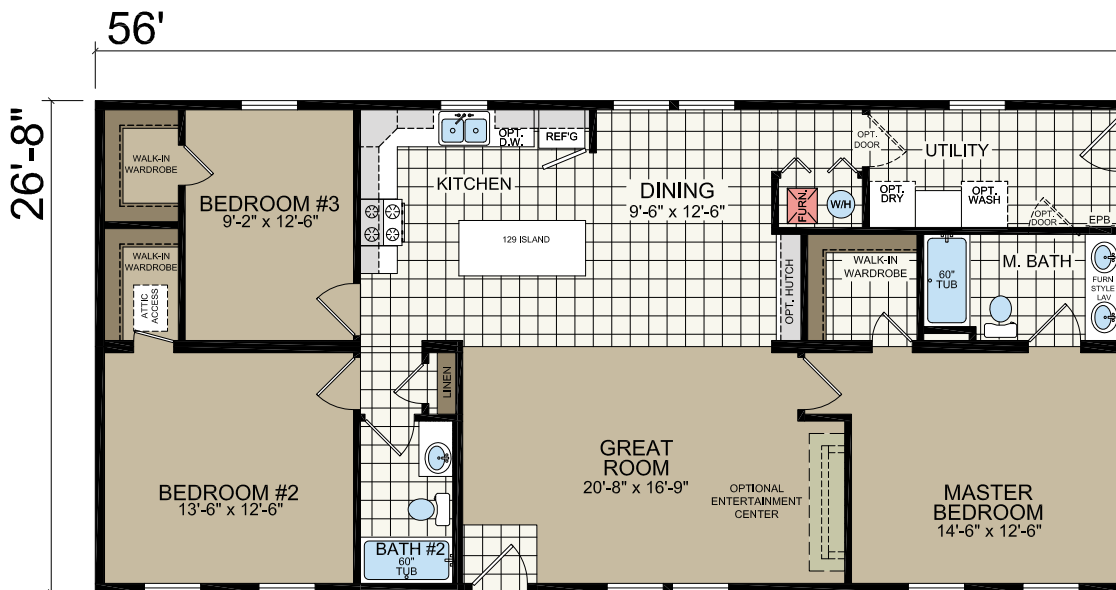


# LAPEER

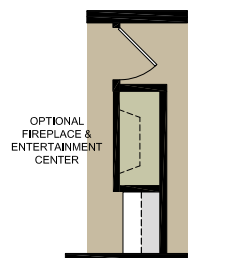
2860-223  
26' 8" x 56'  
3 bed-2 bath  
1493 sq. ft.



Shown with Optional Windows in Master Bedroom and Bedroom #2  
Shown with Optional Elevation, Site-built Porch and Garage by Others



STAIRWELL OPTION



OPTIONAL FIREPLACE

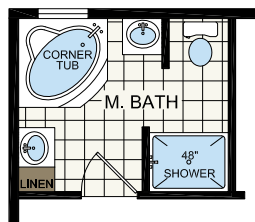
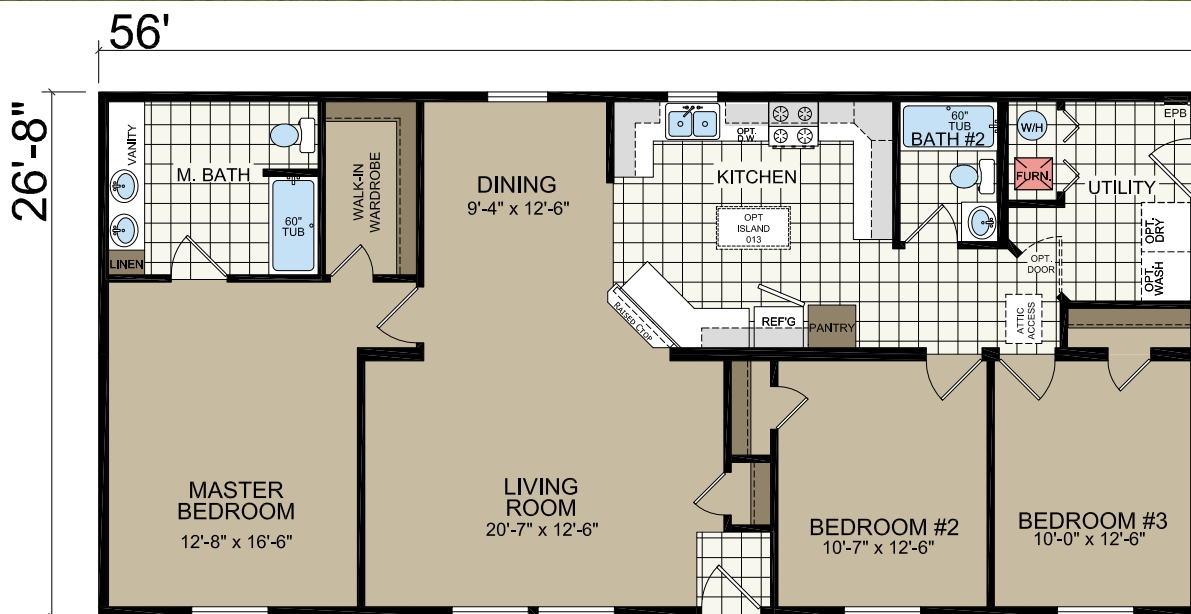


# LEXINGTON

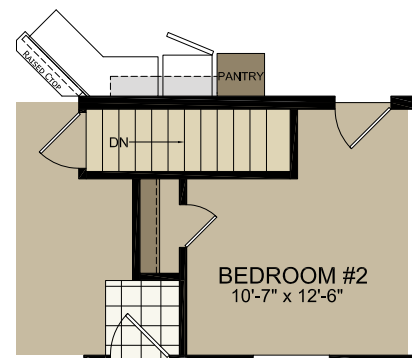
2860-231  
26' 8" x 56'  
3 bed-2 bath  
1493 sq. ft.



Shown with Optional Elevation and Site-built Garage by Others



OPTIONAL MASTER BATH



STAIRWELL OPTION

\* Designates field work

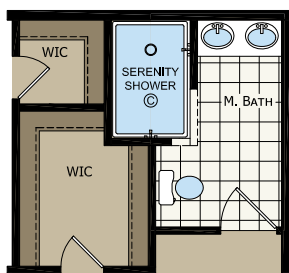
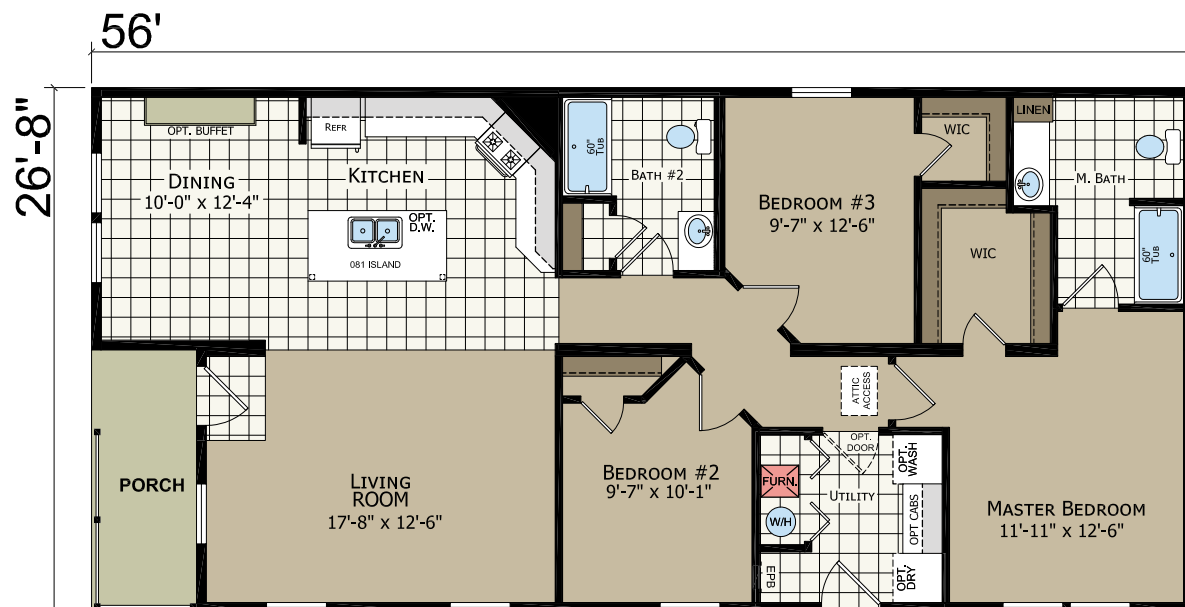
\*\* Insulated heat ducts are shipped loose and installed on-site by others

# BAY PORT

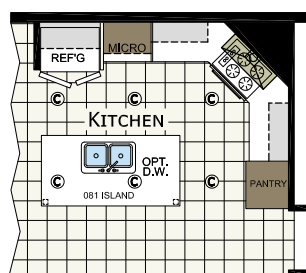
2860-239  
26' 8" x 56'  
3 bed-2 bath  
1420 sq. ft.



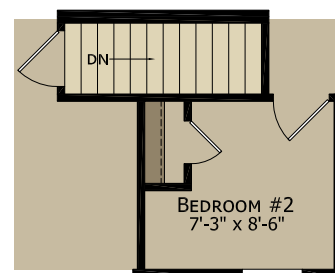
Shown with Optional Elevation



OPTION SERENITY BATH



OPTION ULTIMATE KITCHEN 2



OPTION STAIRWELL

\* Designates field work

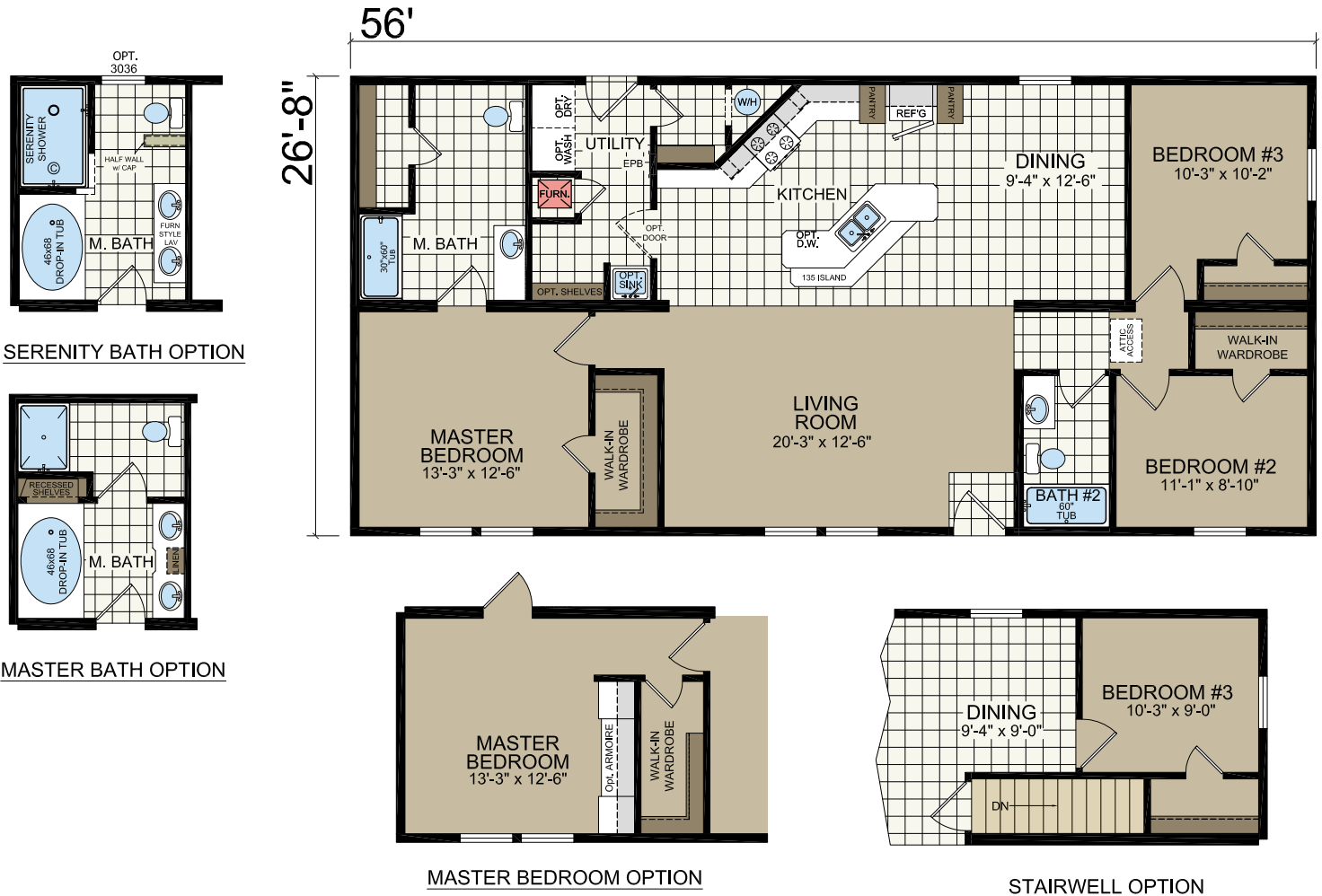
\*\* Insulated heat ducts are shipped loose and installed on-site by others



# NEWPORT

2860 245  
26' 8" x 56'  
3 bed-2 bath  
1493 sq. ft.

Shown with Optional Elevation and On-Site Porch by Others



\* Designates field work

\*\* Insulated heat ducts are shipped loose and installed on-site by others

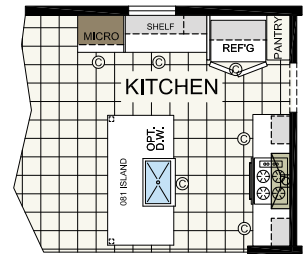
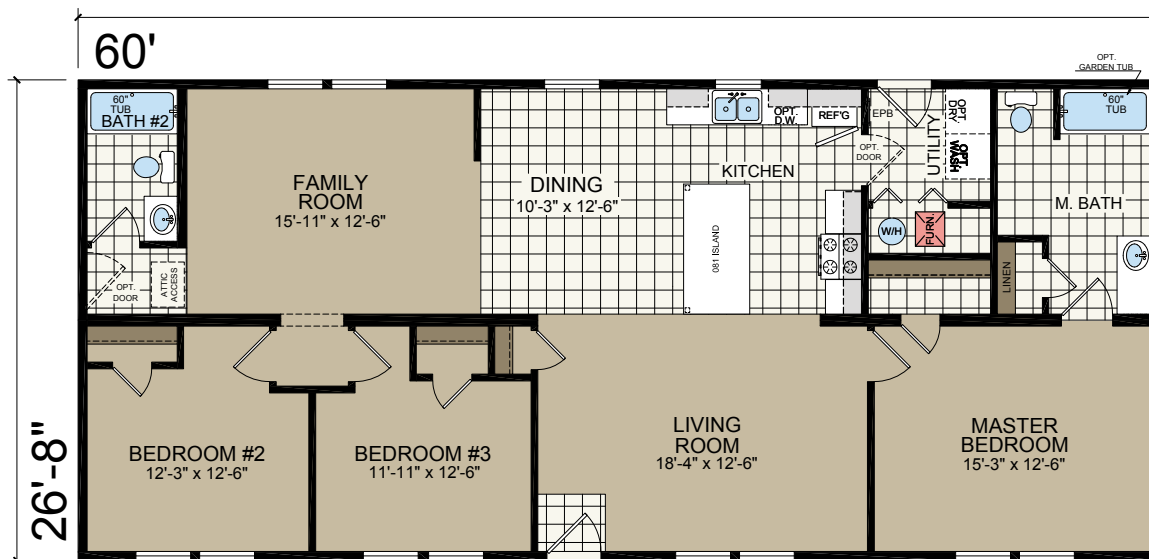


# ALPENA

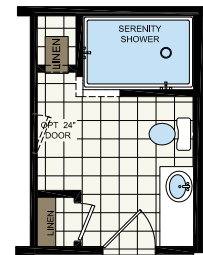
2864-203  
26' 8" x 60'  
3 bed-2 bath  
1600 sq. ft.



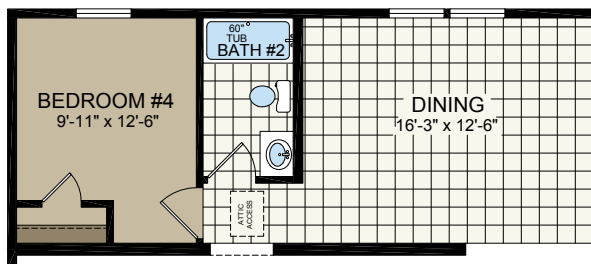
Shown with Optional Elevation, Site-built Porch and Garage by Others



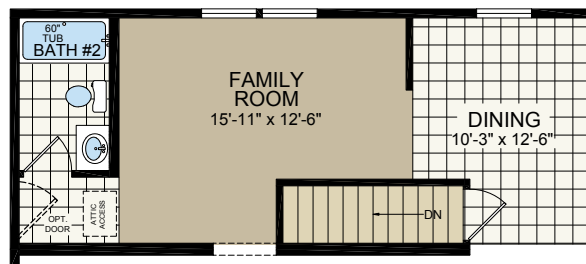
ULTIMATE KITCHEN 2 OPTION



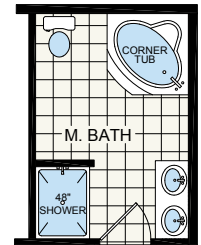
SERENITY BATH OPTION



4TH BEDROOM OPTION



STAIRWELL OPTION  
N/A w/4th BEDROOM OPT.



MASTER BATH OPTION

\* Designates field work

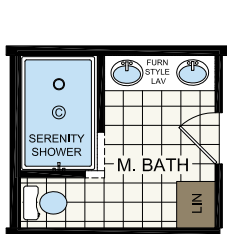
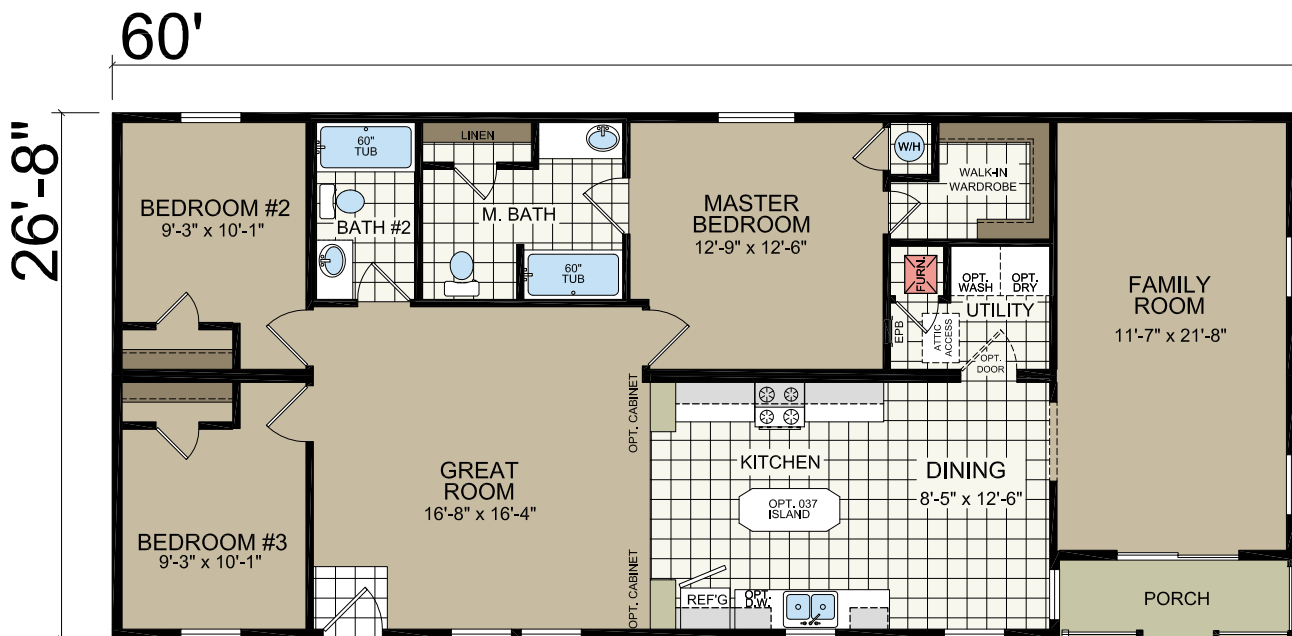
\*\* Insulated heat ducts are shipped loose and installed on-site by others

# BRUTUS

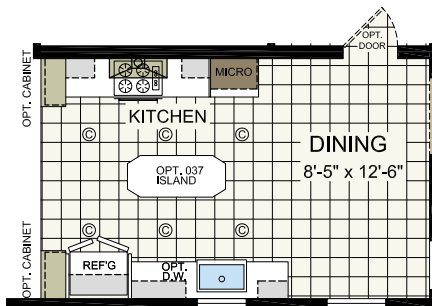
2864-219  
26' 8" x 60'  
3 bed-2 bath  
1552 sq. ft.



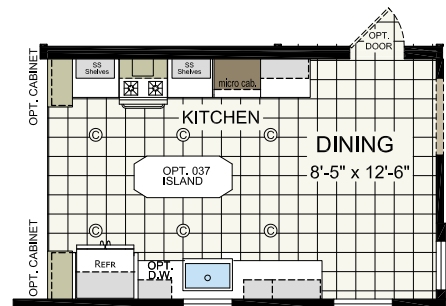
Shown with Optional Elevation, Site-built Porch and Garage by Others



OPT. SERENITY SHOWER



OPTIONAL ULTIMATE KITCHEN 2



OPTIONAL ULTIMATE KITCHEN 3

\* Designates field work

\*\* Insulated heat ducts are shipped loose and installed on-site by others

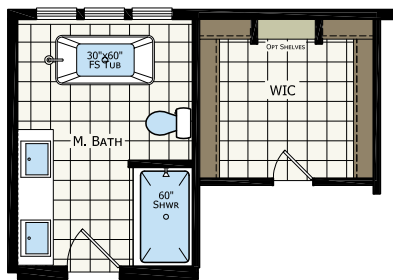
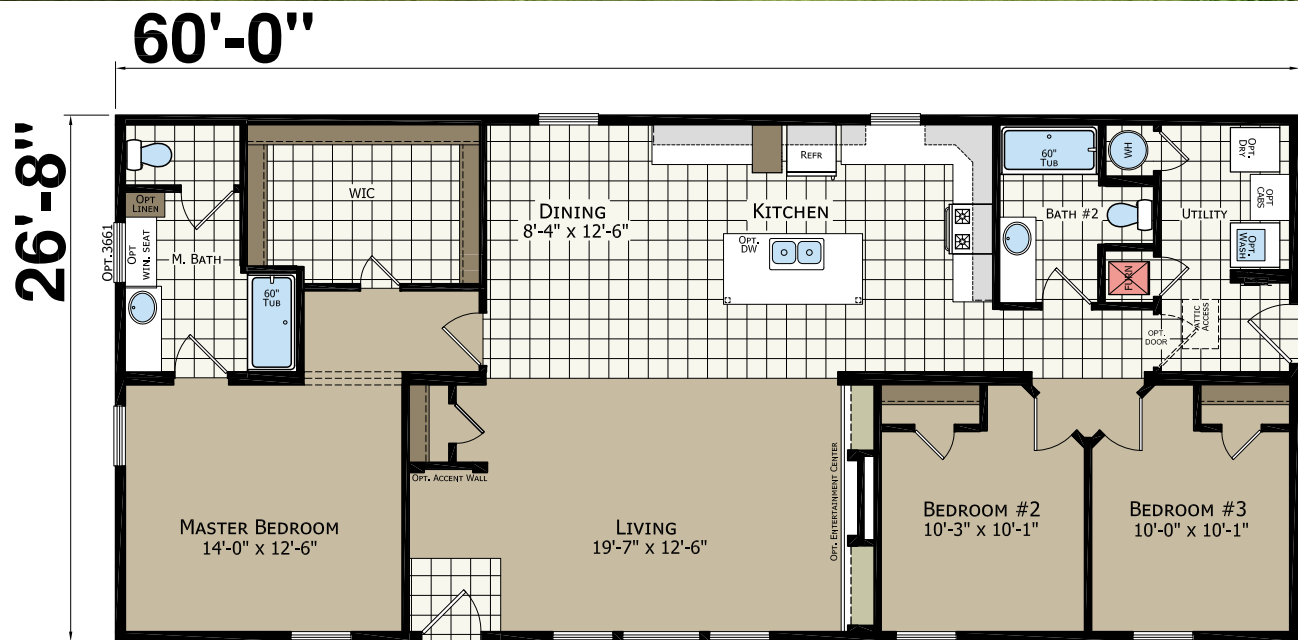


# LELAND

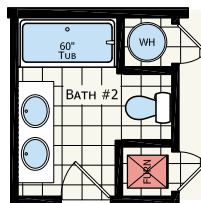
2864-241  
26' 8" x 60'  
3 bed-2 bath  
1600 sq. ft.



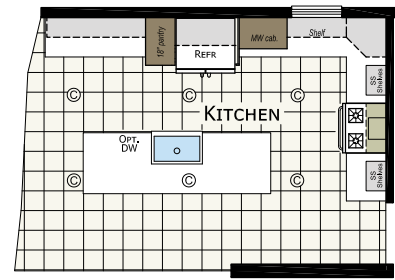
Shown with Optional Elevation



OPTIONAL MASTER BATH



OPTIONAL BATH#2 VANITY



OPTIONAL ULTIMATE KITCHEN 3

\* Designates field work

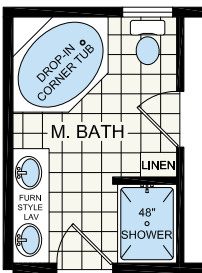
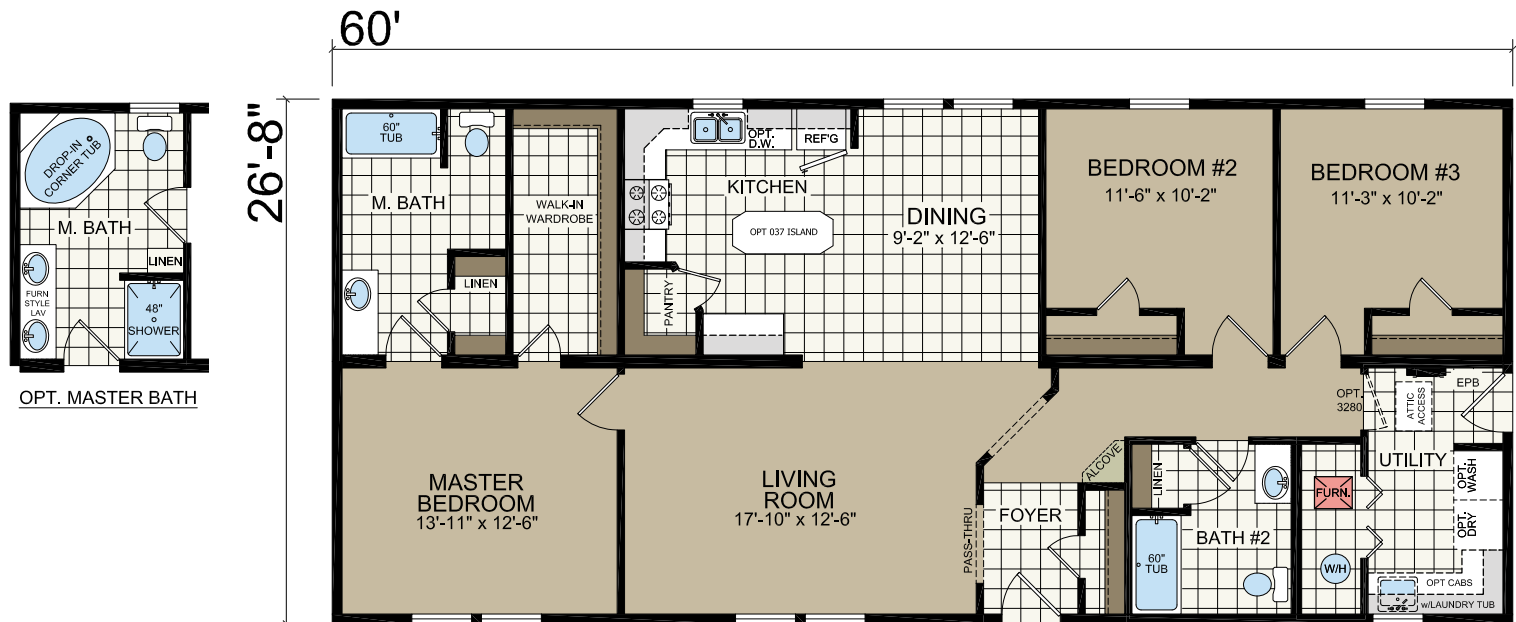
\*\* Insulated heat ducts are shipped loose and installed on-site by others

# MYRTLE

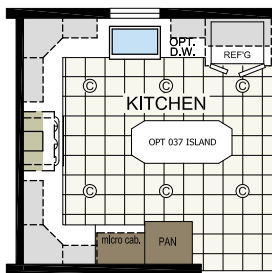
2864-245  
26' 8" x 60'  
3 bed-2 bath  
1600 sq. ft.



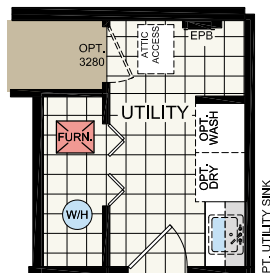
Shown with Optional Elevation, On-Site Porch and Garage by Other



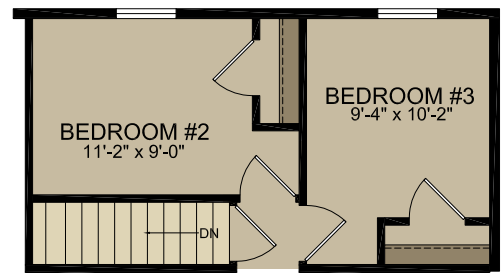
OPT. MASTER BATH



OPT. ULTIMATE KITCHEN II



OPT. DOOR LOCATION



OPT. STAIRWELL

\* Designates field work

\*\* Insulated heat ducts are shipped loose and installed on-site by others

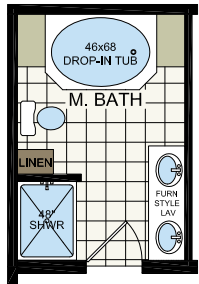
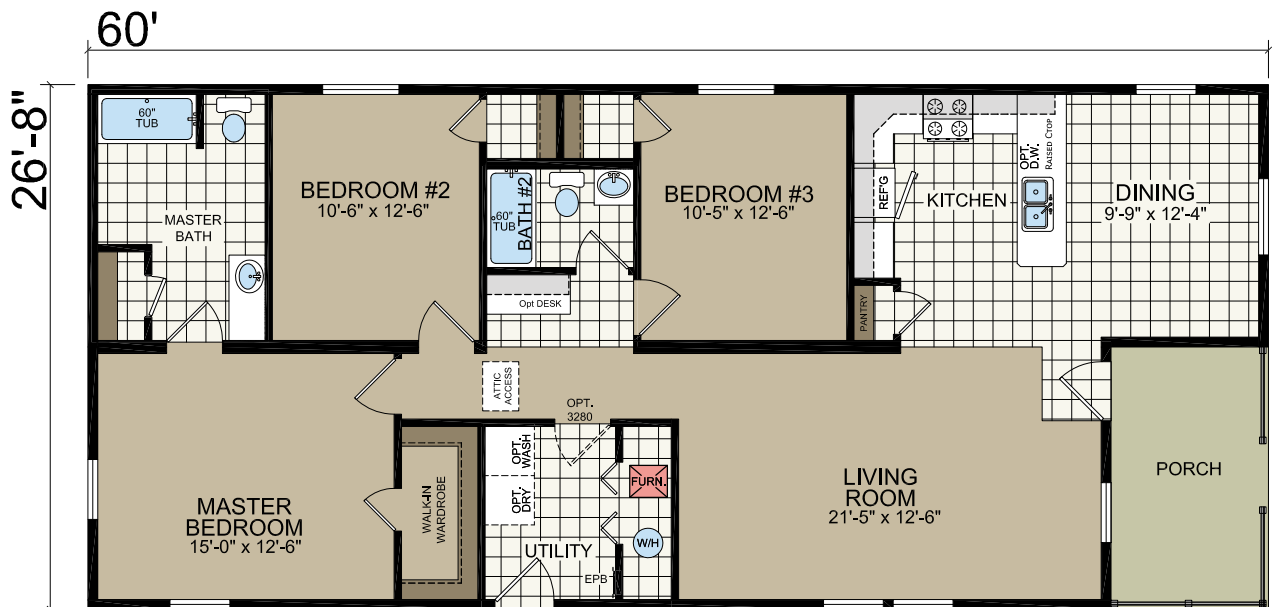


# OCEANSIDE

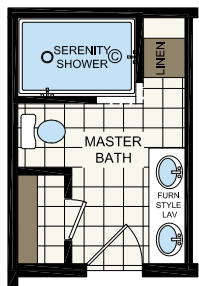
2864-247  
26' 8" x 60'  
3 bed-2 bath  
1496 sq. ft.



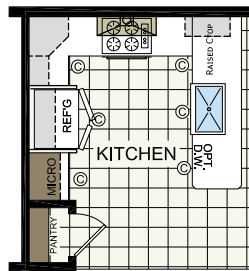
Shown with Garage by Other



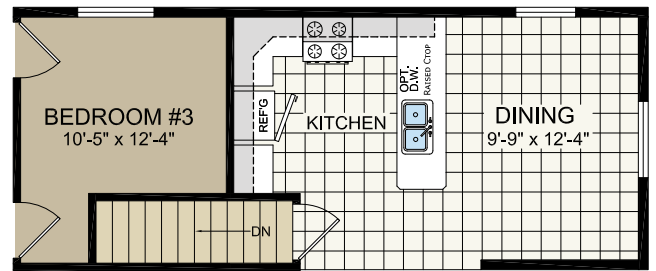
OPT. MASTER BATH



OPT. SERENITY BATH



OPT. ULTIMATE KITCHEN II



OPT. STAIRWELL

\* Designates field work

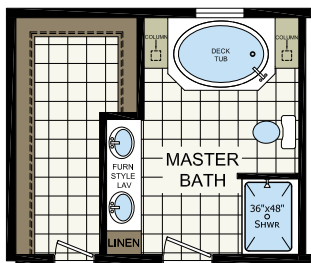
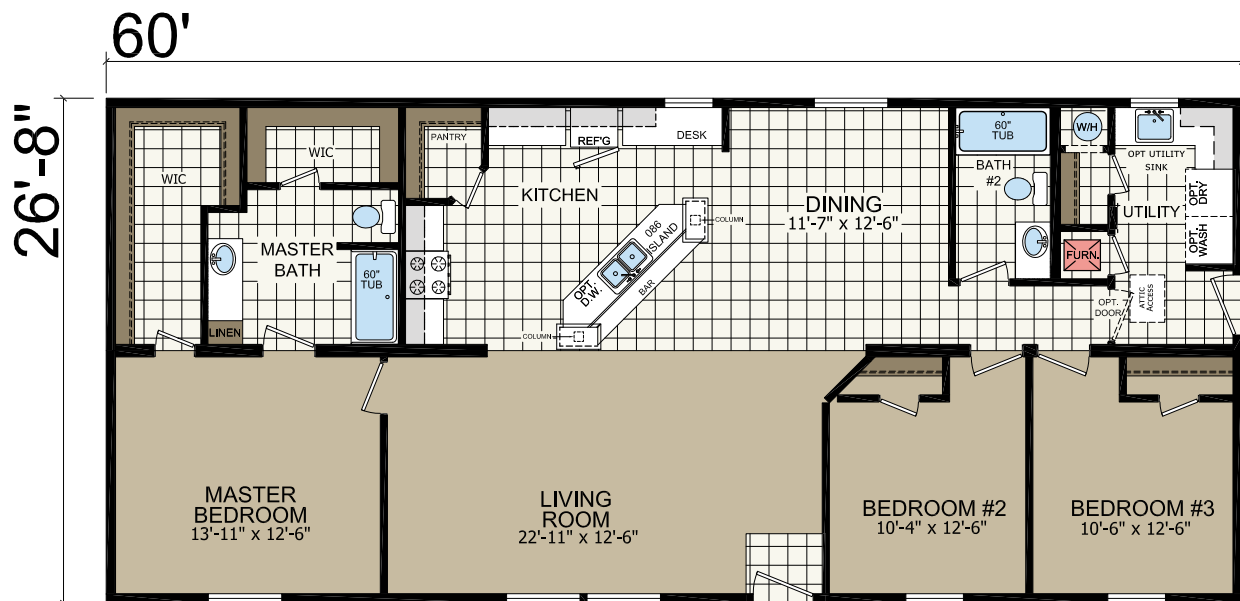
\*\* Insulated heat ducts are shipped loose and installed on-site by others

# MALIBU

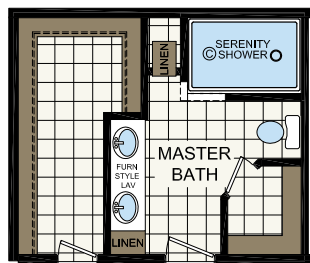
2864-249  
26' 8" x 60'  
3 bed-2 bath  
1600 sq. ft.



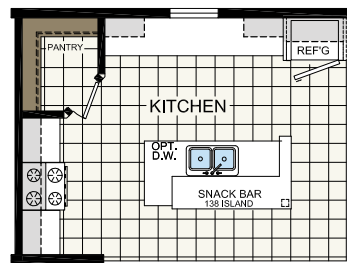
Shown with Optional Elevation, On-Site Porch and Garage by Other



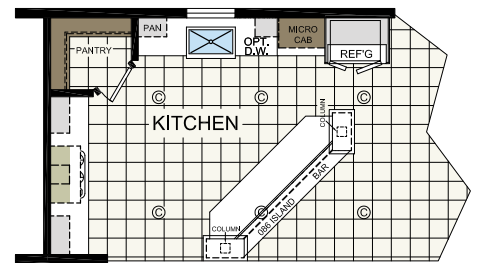
OPTIONAL MASTER BATH



OPTIONAL SERENITY BATH



OPTIONAL KITCHEN



OPT. ULTIMATE KITCHEN #2

\* Designates field work

\*\* Insulated heat ducts are shipped loose and installed on-site by others

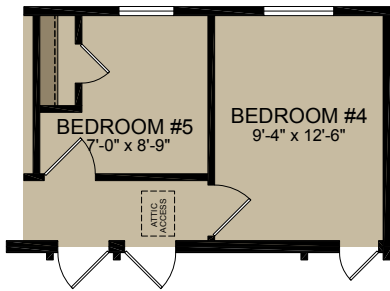
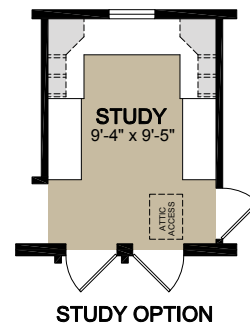
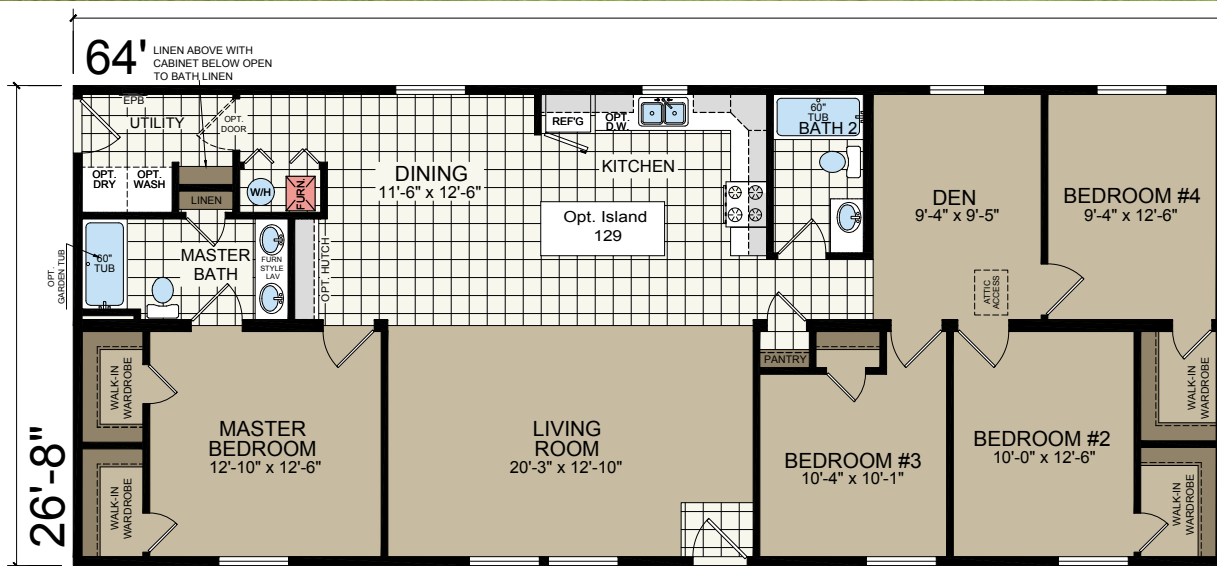


# ALBERTA

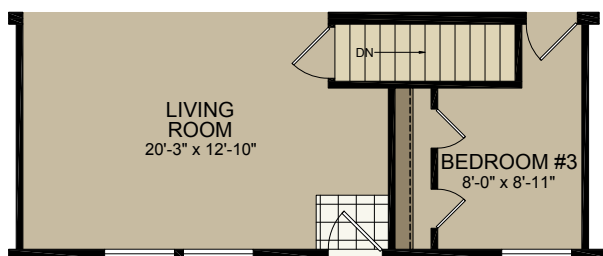
2868-203  
26' 8" x 64'  
4 bed-2 bath  
1706 sq. ft.



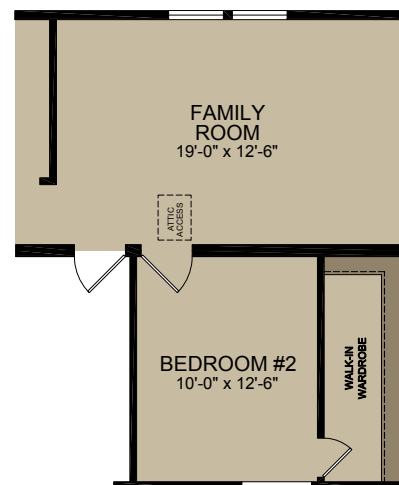
**Shown with Optional Elevation, Site-built Porch and Garage by Others**



### 5TH BEDROOM OPTION



## STAIRWELL OPTION



### FAMILY ROOM OPTION

\* Designates field work

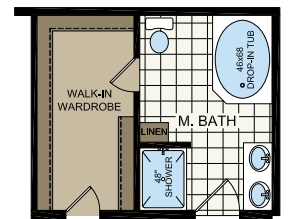
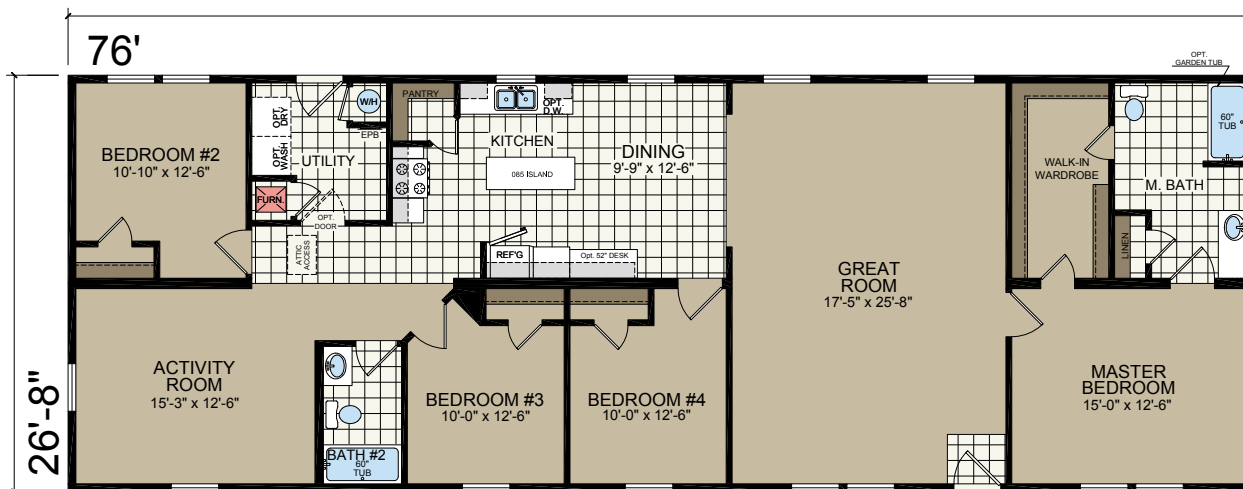
**\*\* Insulated heat ducts are shipped loose and installed on-site by others**

# BALDWIN

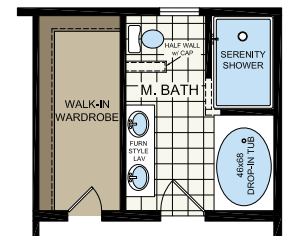
2880-201  
26' 8" x 76'  
4 bed-2 bath  
2026 sq. ft.



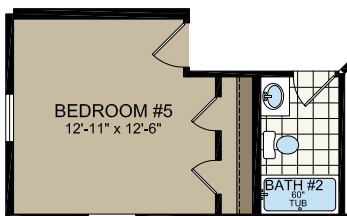
Shown with Optional Elevation, Site-built Porch and Garage by Others



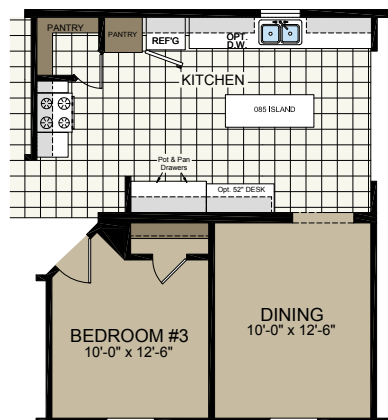
MASTER BATH OPTION



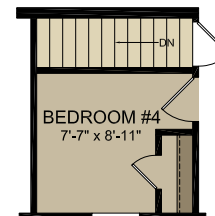
SERENITY BATH OPTION



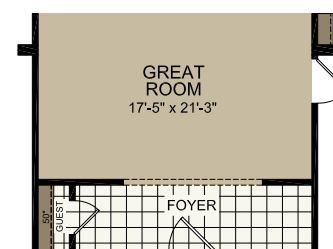
5TH BEDROOM OPTION



OPTION KITCHEN w/ FORMAL DINING ipo 4TH BEDROOM



STAIRWELL OPTION



OPTIONAL FOYER

\* Designates field work

\*\* Insulated heat ducts are shipped loose and installed on-site by others



# INDIAN

3268-217  
26' 8" x 64'  
4 bed-2 bath  
1920 sq. ft.



Shown with Optional Elevation, Site-Built Porch and Garage by Others



\* Designates field work

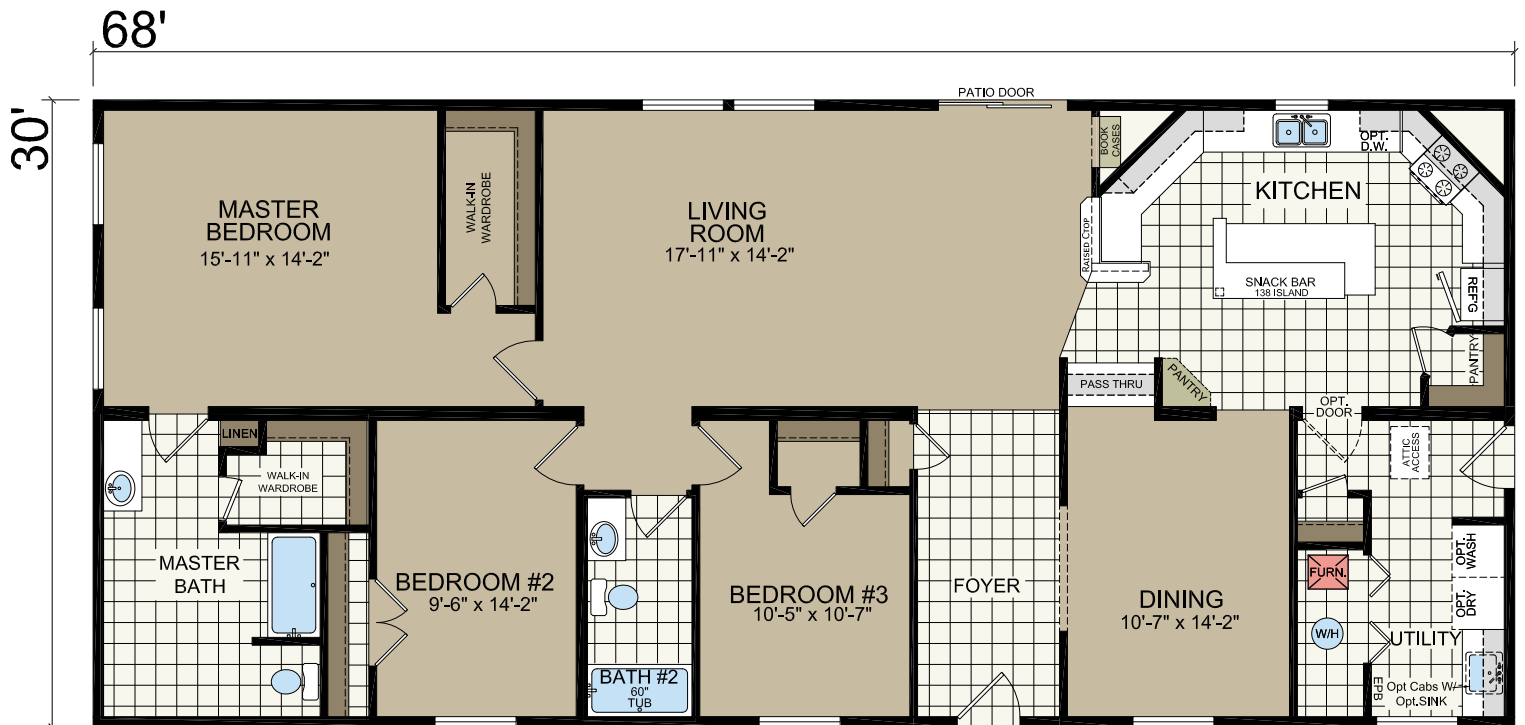
\*\* Insulated heat ducts are shipped loose and installed on-site by others

# DAKOTA

3272-219  
30' x 68'  
3 bed-2 bath  
2040 sq. ft.



**Shown with Optional Elevation, Site-Built Porch and Garage by Others**

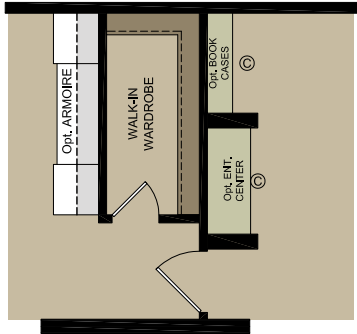


\* Designates field work

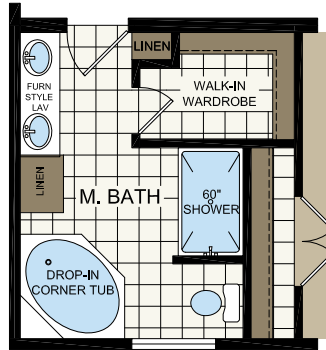
**\*\* Insulated heat ducts are shipped loose and installed on-site by others**



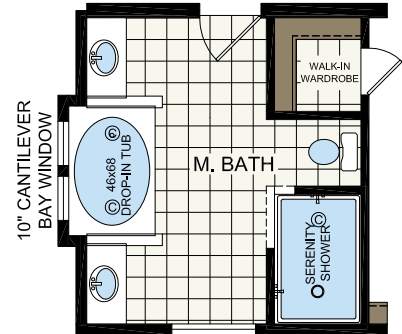
# DAKOTA OPTIONS



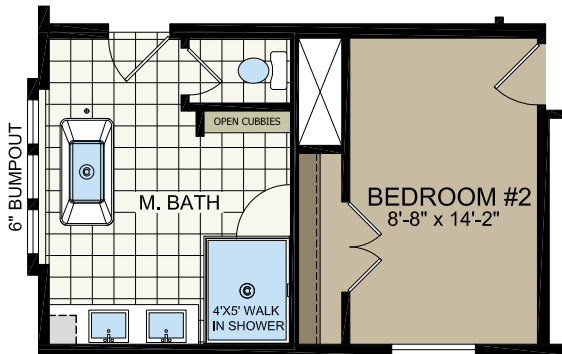
OPT. ARMOIRE and/or  
OPT. ENT. CENTER & BOOKCASES



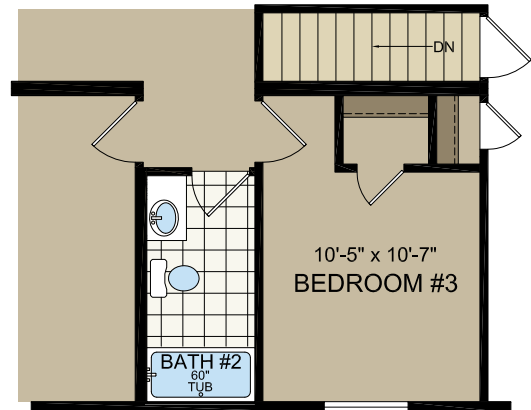
OPTION MASTER BATH



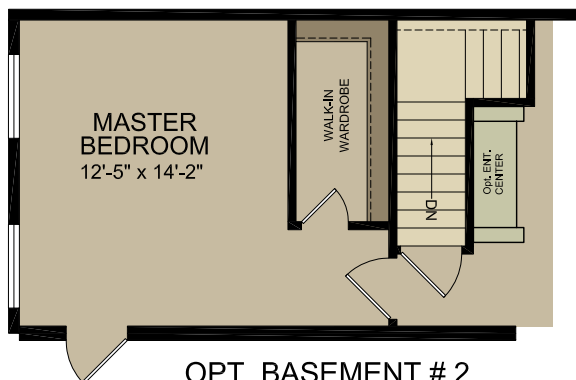
OPTION SERENITY BATH



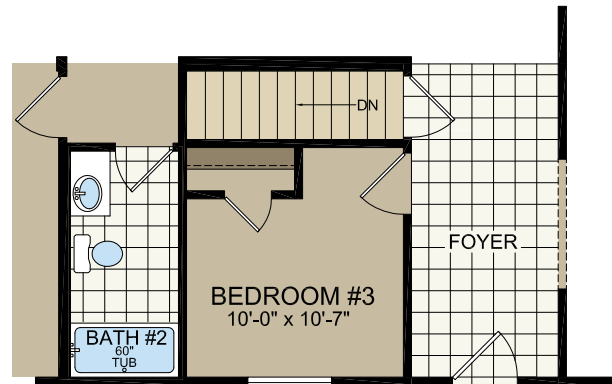
OPTIONAL RADIANT SPA BATH



OPT. BASEMENT



OPT. BASEMENT # 2



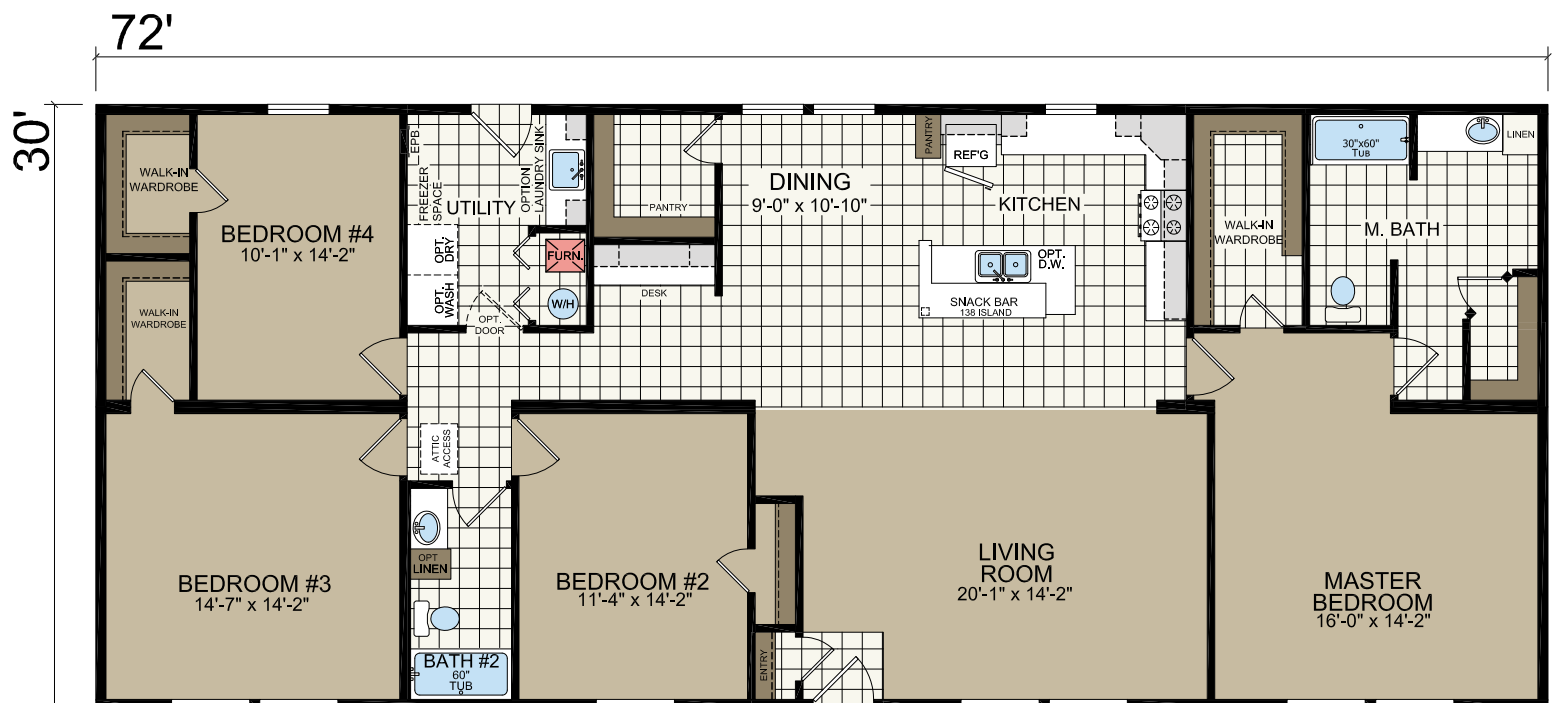
OPT. BASEMENT # 3

# APOLLO

3276-201  
30' x 72'  
4 bed-2 bath  
2160 sq. ft.



Shown with Optional Elevation, Site-Built Porch and Garage by Others

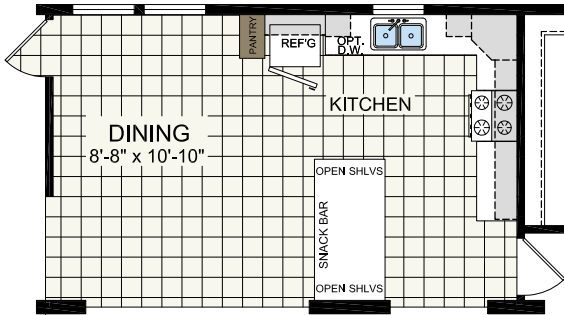


\* Designates field work

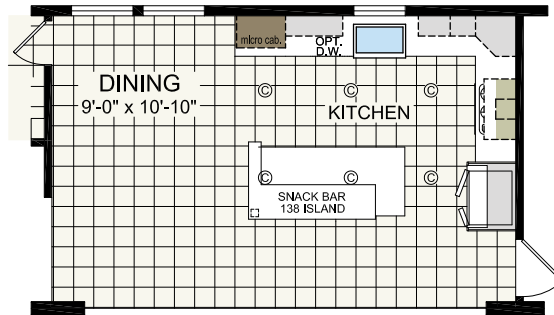
\*\* Insulated heat ducts are shipped loose and installed on-site by others



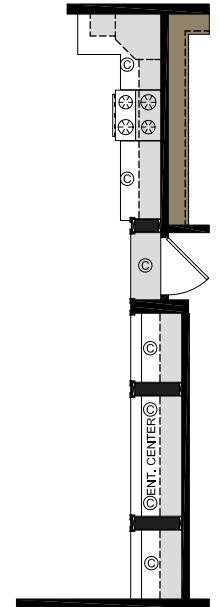
# APOLLO OPTIONS



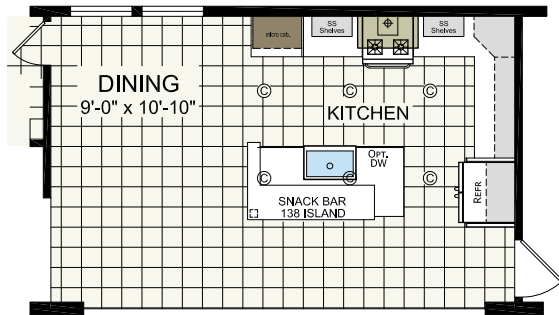
OPTION KITCHEN



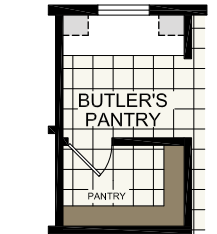
OPTION ULTIMATE KITCHEN #2



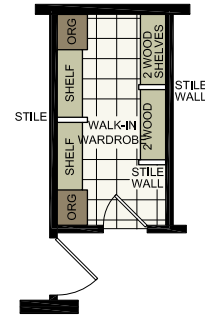
OPTION VANISHING  
MATE LINE



OPTION ULTIMATE KITCHEN #3



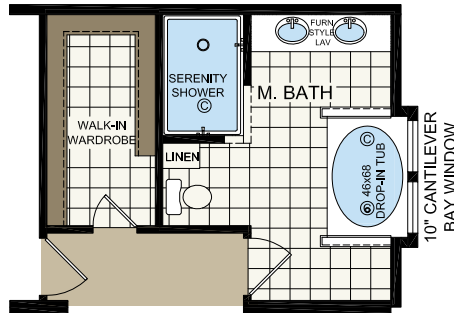
OPTION BUTLER'S  
PANTRY



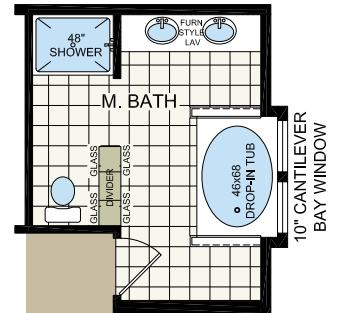
OPTION CLOSET  
ORGANIZER



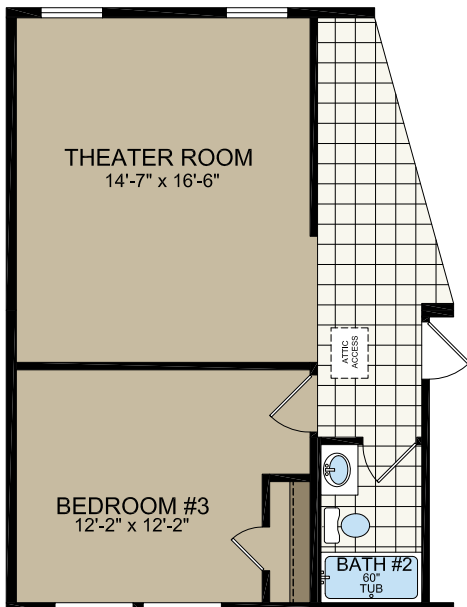
OPTION ENT. CENTER



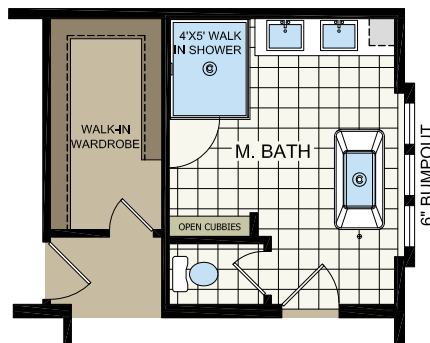
OPTION SERENITY BATH



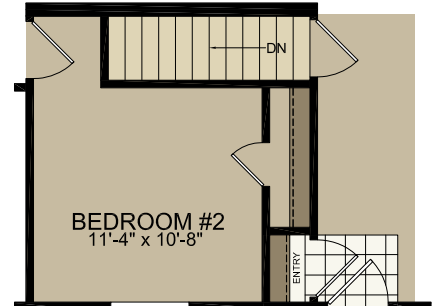
OPTION MASTER BATH



OPTION THEATER ROOM



OPTIONAL RADIANT SPA BATH



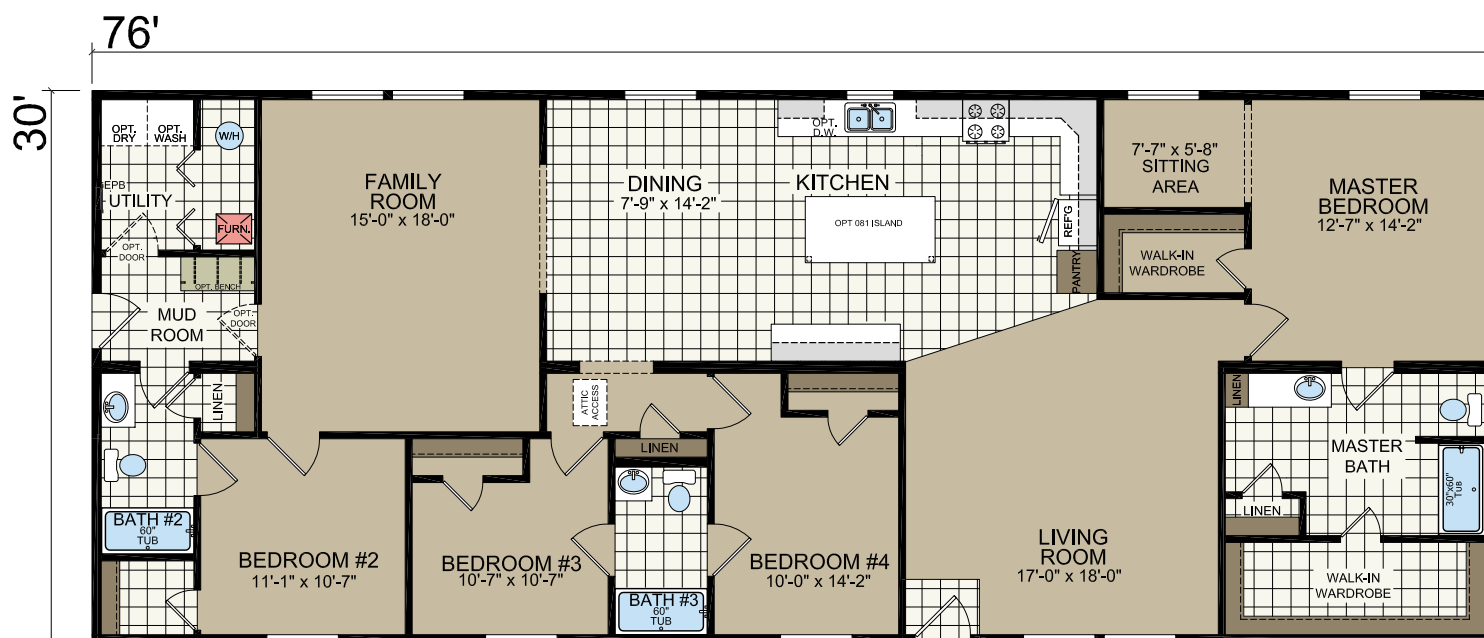
STAIRWELL OPTION

# RED CEDAR

3280-217  
30' x 76'  
4 bed-2 bath  
2208sq. ft.



**Shown with Optional Elevation, Site-Built Porch and Garage by Others**

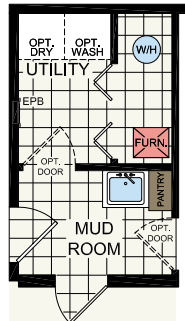


\* Designates field work

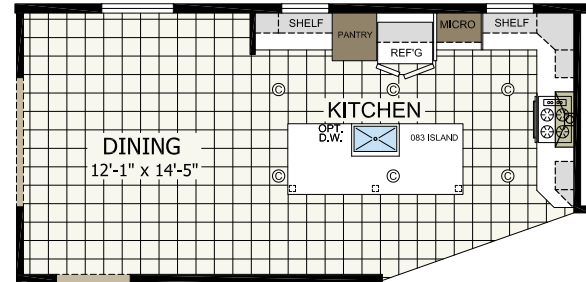
**\*\* Insulated heat ducts are shipped loose and installed on-site by others**



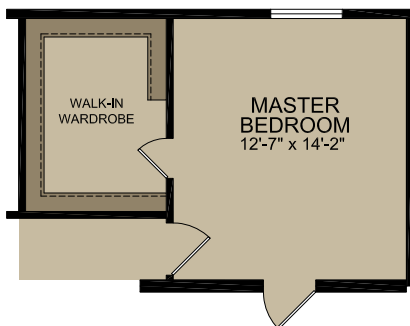
# RED CEDAR OPTIONS



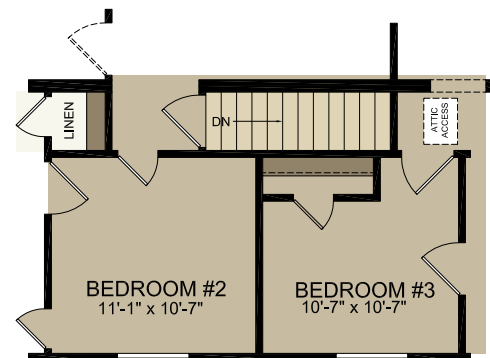
OPTIONAL UTILITY SINK



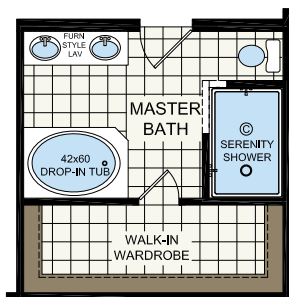
OPTIONAL ULTIMATE KITCHEN 2



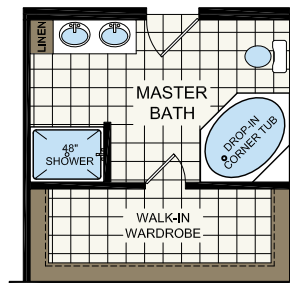
OPTIONAL WALK-IN WARDROBE



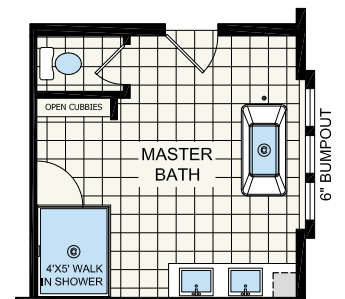
OPTIONAL BASEMENT



OPTIONAL SERENITY BATH



OPTIONAL MASTER BATH



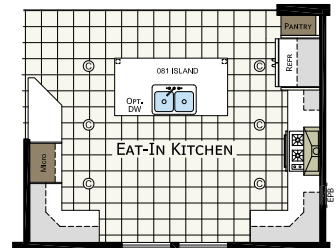
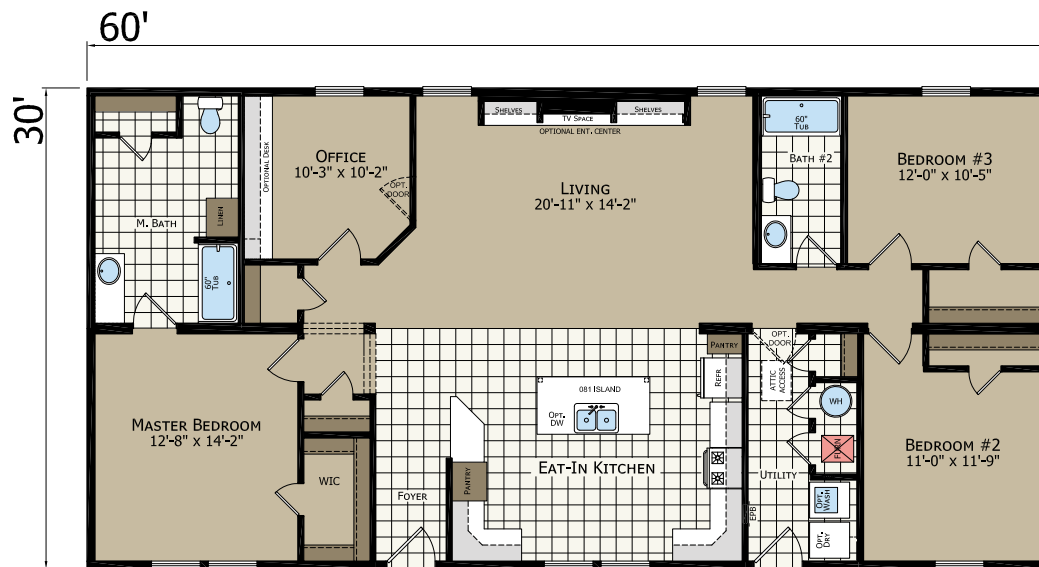
OPTIONAL RADIANT SPA

# SHELBY

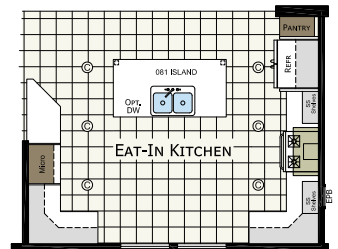
3264-215  
30' x 60'  
3 bed-2 bath  
1800 sq. ft.



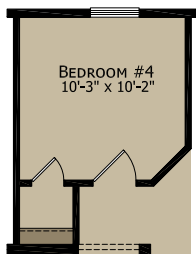
Shown with Optional Elevation, Site-built Porch and Garage by Others



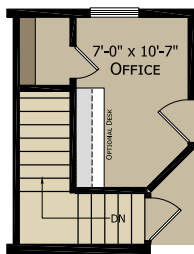
OPTIONAL ULTIMATE KITCHEN 2



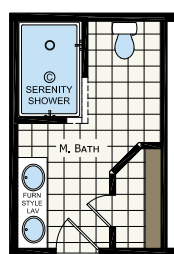
OPTIONAL ULTIMATE KITCHEN 3



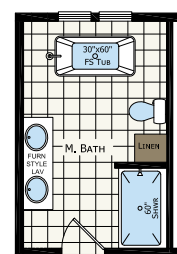
OPTIONAL 4TH BEDROOM  
N/A W/ OPTIONAL STAIRWELL



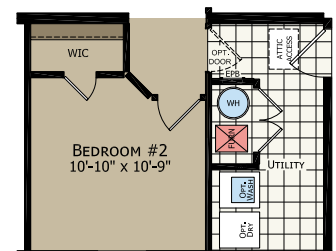
OPTIONAL STAIRWELL  
N/A W/ OPTIONAL 4TH BEDROOM



OPTIONAL SERENITY BATH



OPTIONAL MASTER BATH



OPTIONAL END ENTRY

\* Designates field work

\*\* Insulated heat ducts are shipped loose and installed on-site by others



# SHELBY





# APOLLO





# ADVANTAGE MOD SERIES

## STANDARD FEATURES

### INTERIOR FINISH

8' Flat Ceiling \*\*  
Stomp Textured Ceilings  
Drywall T/O (required option)  
Smooth Finnish With Tinted Primer \*\*  
Finished Ceiling Joints Except Closets \*\*  
Live Wire Carpet  
Tack Strip  
5lb Rebond Carpet Pad  
Linoleum - Factory Designer Choice  
Entry Foyer at Front Door  
Valances Living Areas & Master Bedroom  
2" Mini Blinds Throughout  
Wire Shelving in Closets  
Wire Washer/Dryer Shelf  
6 Panel White Interior Doors  
2-Mortised Hinges at Interior Doors  
Flat Wrapped Door Casing  
3 Side Door Stop  
Wrapped Door Jambs  
Wrapped Window Jambs  
Wrapped Shoe Base Trim  
Wrapped Flat Panel Cabinets  
Wrapped Cabinet Stiles  
Cove Moulding at Top of O/H Cabs  
Concealed Cabinet Door Hinges  
Brushed Nickel Cabinet Knobs  
Formica Countertops  
Self Edge Formica at Countertops  
Ceramic Backsplash T/O \*\*  
6" Interior Lights - VBP  
Switched Walk-In Closet Lights - VBP

\* Included in Modular Package  
VBP = Varies by Print

NEW **Optional** Rugged Package:  
5/12 Roof Pitch | Architectural Shingles |  
Open Floor Joist | 3/4" Floor Decking

### EXTERIOR

8' Sidewall \*\*  
(28' Wide) Nominal 3/12 Roof Pitch \*\*  
(30' Wide) 5/12 Roof Required  
25 Year 3-Tab Shingles  
OSB Wrap \*\*  
Weather Wrap \*\*  
Double 4 Dutch Lap Vinyl Siding  
Aluminum Fascia / Vinyl Soffit  
Vented Eaves All Around  
Raised Panel Shutters - Front Door Side  
Black Torch Light - Front Door  
Exterior Light - Rear Door

### KITCHEN / BATHROOMS

Black Standard Electric Range  
Black 30" Range Hood  
Black 18 CF Over/Under Refrigerator  
Wrapped Flat Panel Cabinets  
Wrapped Cabinet Stiles  
**Lined Overhead Cabinets w/Adj Shelf**  
Corner O/H Kitchen Cabinet (VBP)  
30" O/H Cabinets w / Fixed Shelf  
Shelf Over Refrigerator  
**Center Shelves in Base (Kitchen)**  
Single Bank of Drawers - Kitchen  
2 Knob Kitchen Faucet w / Sprayer  
Stainless Steel Kitchen Sink  
60" One Piece Fiberglass Tub/Shower  
Single Bank of Drawers - Baths - VBP  
Round Commode  
China Vanity Sinks  
Metal Tub Faucets \*\*  
2 Knob Vanity Faucets  
30" Bath Lavs (VBP)  
Beveled Bathroom Mirrors  
Lighted Bath Fan

### EXTERIOR DOORS WINDOWS

**6 Pnl Residential Front Door (no storm)**  
36" x 80" Fire Rated Rear Door \*\*  
Dead Bolt Locks on Exterior doors  
Low "E" Vinyl Grid Windows

### STRUCTURAL

2 x 10 Floor Joists 16" O.C. \*\*  
Returnable Modular Carrier  
2 x 6 Exterior Sidewalls - 16" OC \*\*  
2 x 4 24" O.C. Interior Walls \*\*  
R-40 Roof Insulation \*\*  
R-19 Sidewall Insulation \*\*  
5/8" OSB T&G Floor Decking  
7/16" OSB Roof Sheathing  
Water Resistant Roof Underlayment

### HEATING, PLUMBING & ELECTRICAL

Electric Furnace  
Furnace Door  
Cold Air Returns In Ceiling \*\*  
Fiberglass Heat Ducts \*\*  
Shipped Loose  
Toekick Baseboard Registers \*\*  
Kitchen & Baths  
Perimeter Drop-In Registers \*\*  
200 AMP Service With 30/40 Panel \*\*  
(2) Exterior Recept \*\*  
12-2 Copper Wiring  
Wire for Electric Dryer  
TV/Ph Jack In Kitchen  
Plumb for Washer  
PEX Water Lines  
Schedule 40 PVC Drain & Vent Lines \*\*  
30 Gallon Electric Water Heater  
(1) Frost Free Exterior Faucet  
**Water Shut-Offs T/O**

*Due to continuous product development and improvement, prices, specifications and material are subject to change without notice or obligation. Square footage and other dimensions are approximate. Included images are artist renderings and are not intended to be a accurate representation of the homes. Renderings and floorplans may be shown with optional features and / or third party additions that may not be available in all regions or situations. Exterior renderings may include onsite builder built options not offered by Champion Home Builders, Inc.*



308 Sheridan Drive | Topeka, IN 46571

[www.redmanhomesofindiana.com](http://www.redmanhomesofindiana.com)

CHAMPION®

MANUFACTURED BEAUTIFULLY™