

The Harmony Series



The Harmony Series
from Fairmont Homes

2181 East Market Street
Nappanee, IN 46550

800.777.8787

fairmonthomes.com

Get Back to Living

with

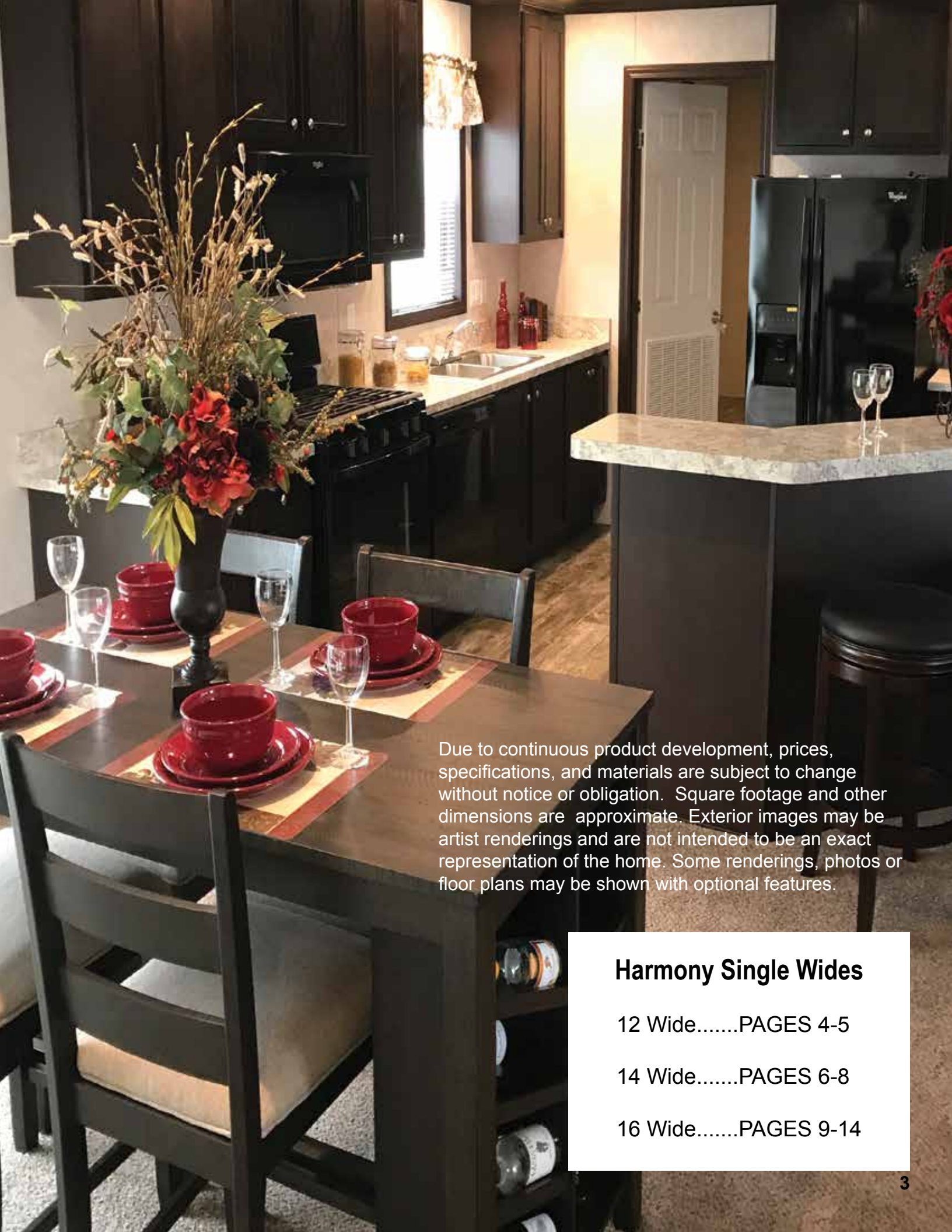
*Innovation
through
design*

Starting in 1971, on the site of a former cabbage factory, Fairmont Homes has fashioned a contemporary look for their homes. Since its inception, Fairmont has experienced tremendous success, becoming one of the largest single location facilities in the housing industry and evolving into a family of companies that produce beautiful and diverse value packed housing. As a leader in innovation and superior construction techniques, Fairmont continues to transform the factory built housing industry into the best value in American home ownership.

Explore Fairmont Homes

Visit us at

www.fairmonthomes.com



Due to continuous product development, prices, specifications, and materials are subject to change without notice or obligation. Square footage and other dimensions are approximate. Exterior images may be artist renderings and are not intended to be an exact representation of the home. Some renderings, photos or floor plans may be shown with optional features.

Harmony Single Wides

12 Wide.....PAGES 4-5

14 Wide.....PAGES 6-8

16 Wide.....PAGES 9-14

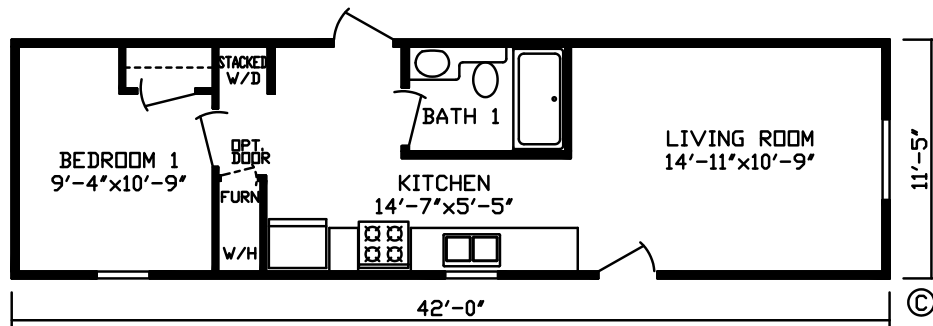
12 Wide

Boone

Model #150591

1 Bed 1 Bath

479 Sq. Ft.

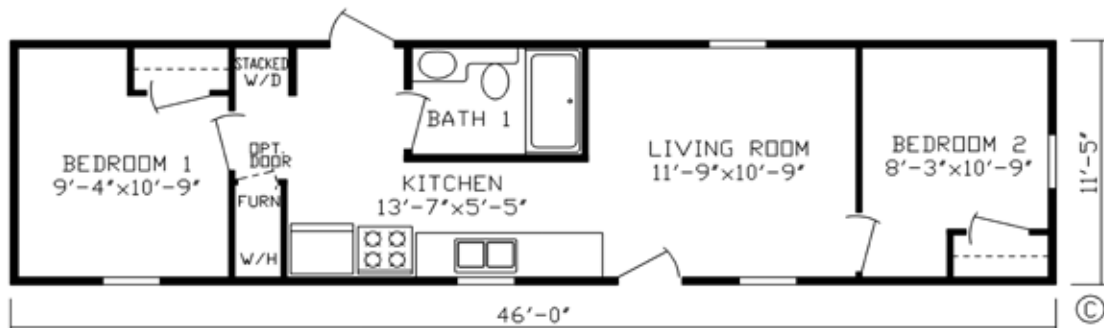


Harris

Model #150584

2 Bed 1 Bath

525 Sq. Ft.

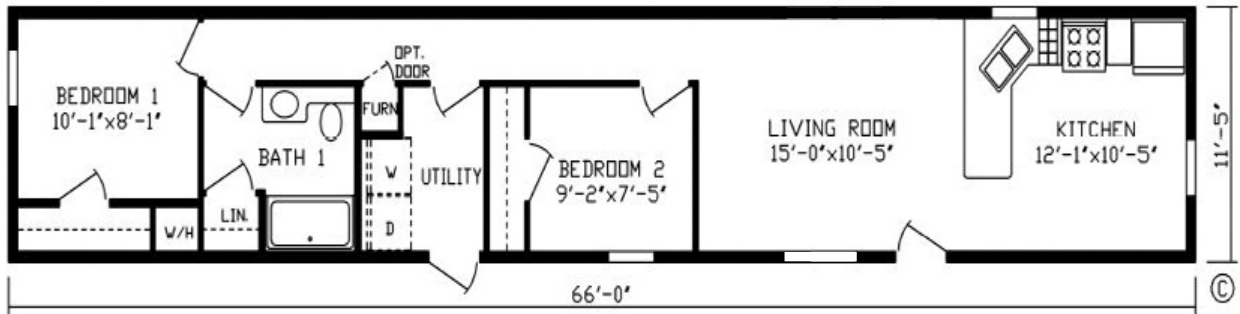


Knox

Model #150634

2 Bed 1 Bath

753 Sq. Ft.

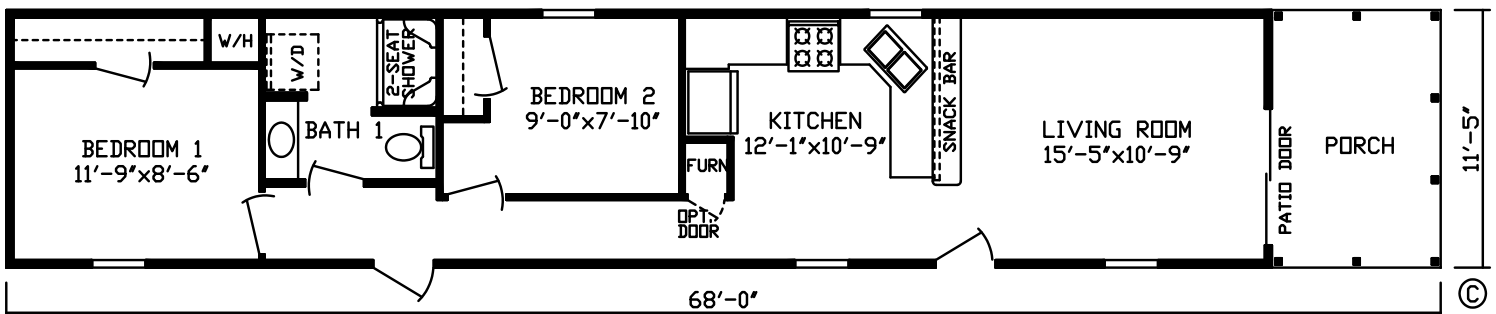


Allen

Model #150601

2 Bed 1 Bath

685 Sq. Ft.



Renderings may differ from floor plans

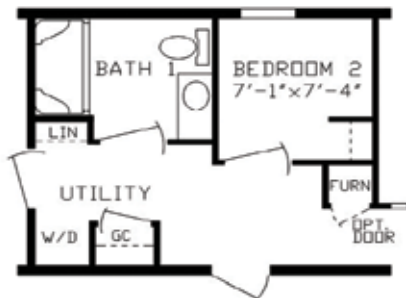
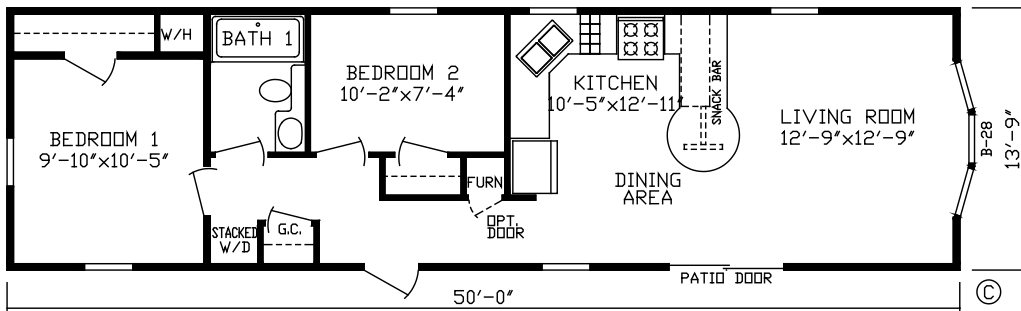
14 Wide

Rosen

Model #150559

2 Bed 1 Bath

687 Sq. Ft.



Room Option #6267



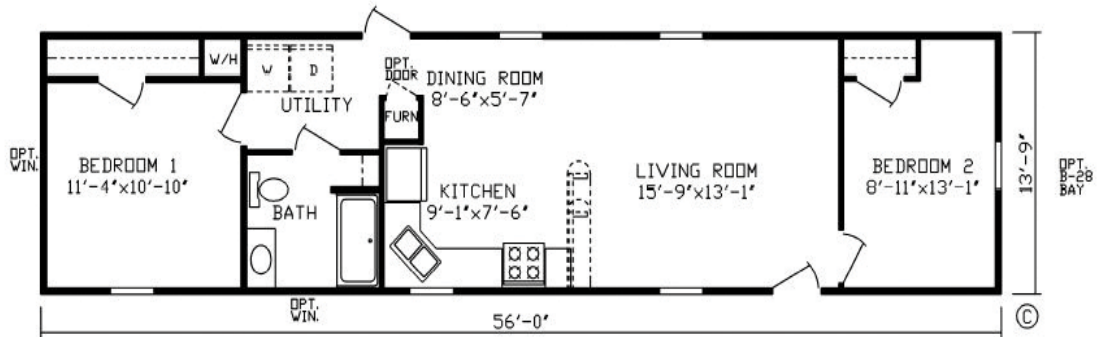
Room Option #6303

Pierre

Model #150503

2 Bed 1 Bath

770 Sq. Ft.

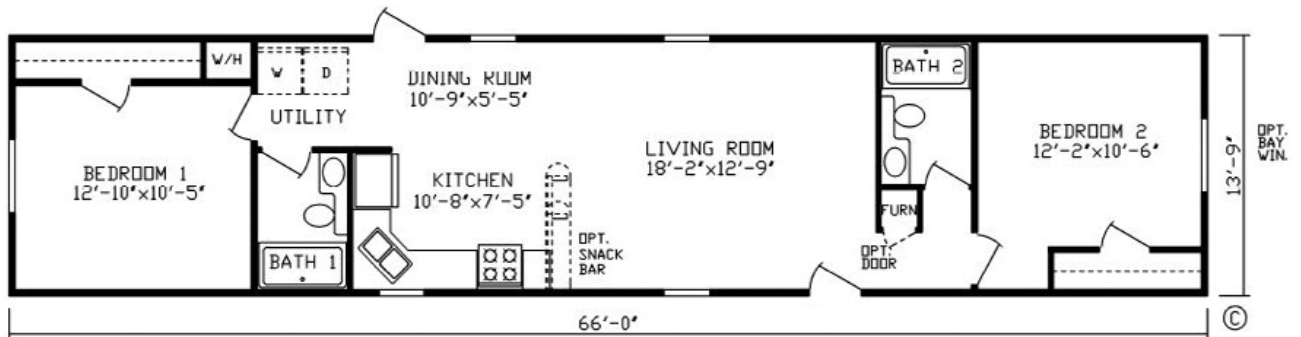


Porter

Model #150512

2 Bed 2 Bath

908 Sq. Ft.



Renderings may differ from floor plans

14 Wide

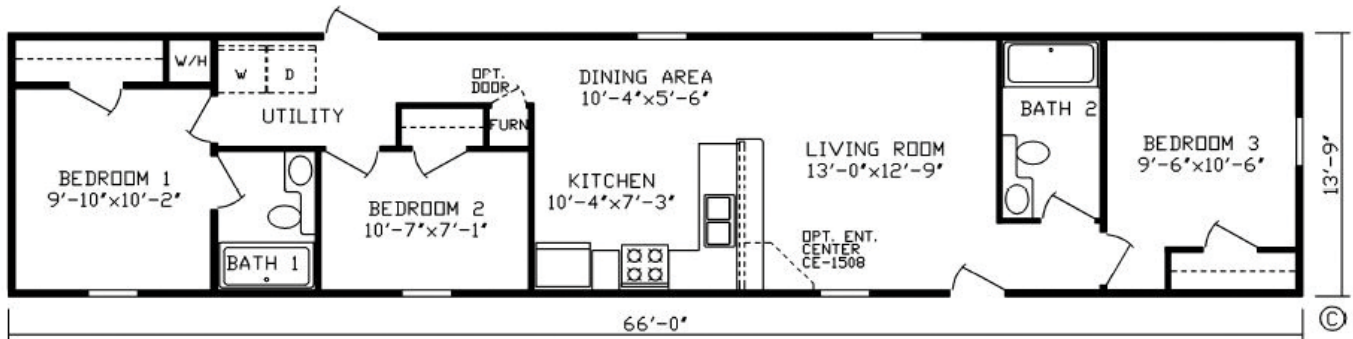
Norton

Model #150569

3 Bed 2 Bath

908 Sq. Ft.

Print #150568 — Reverse Aisle

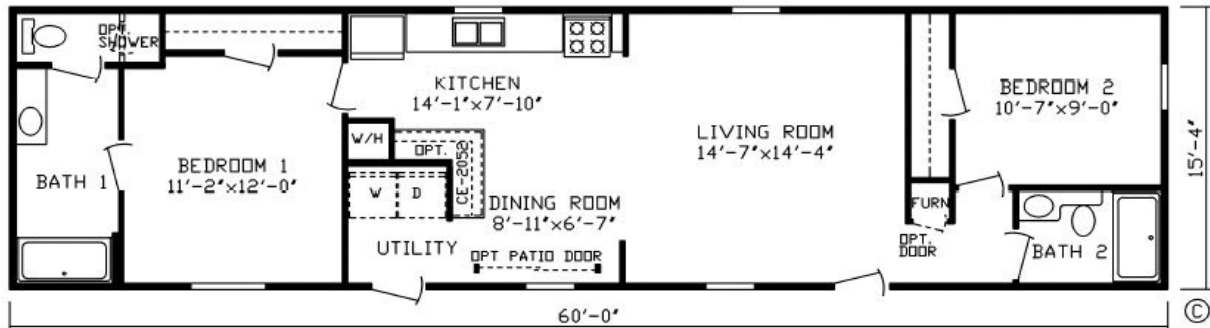


Adler

Model #150515

2 Bed 2 Bath

920 Sq. Ft.



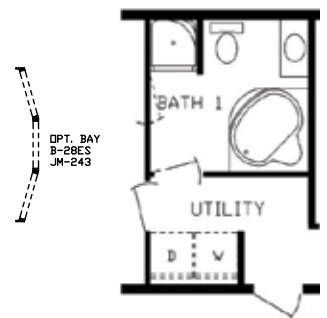
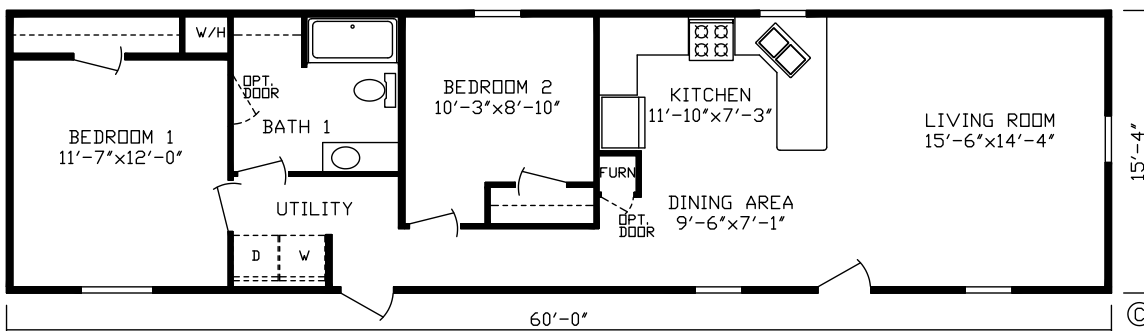
Room Option
#5878ESD

Hendrik

Model #150510

2 Bed 1 Bath

920 Sq. Ft.



Room Option
#4858ESD
#4862D

16 Wide

Braxton

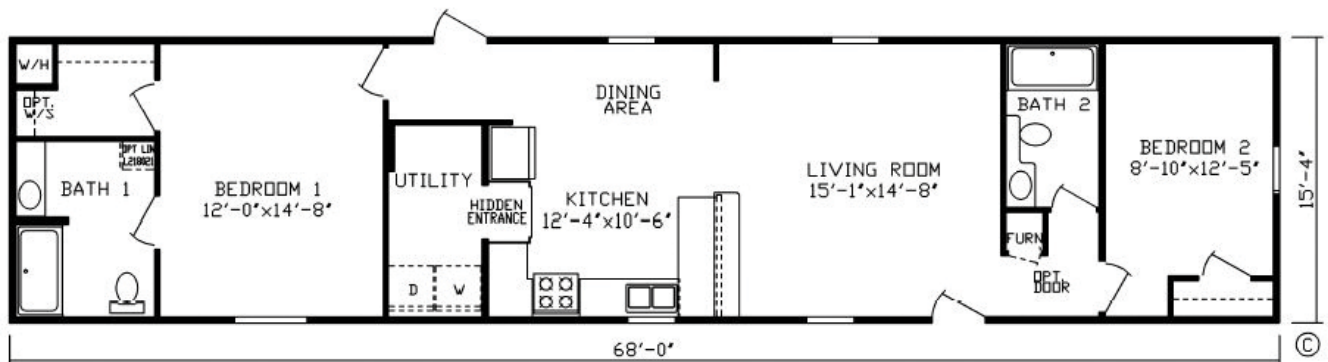
Model #150532

2 Bed 2 Bath

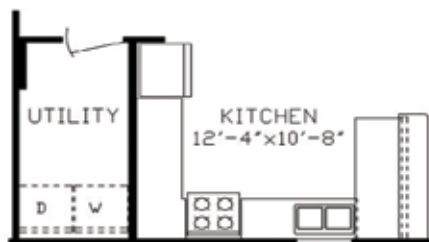
1,043 Sq. Ft.

Print #150595 — Reverse Aisle

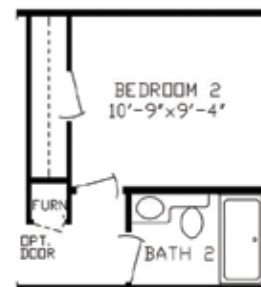
Print #150594 — 14 Wide Model/Reverse Aisle



Room Option #4988



Room Option #6165



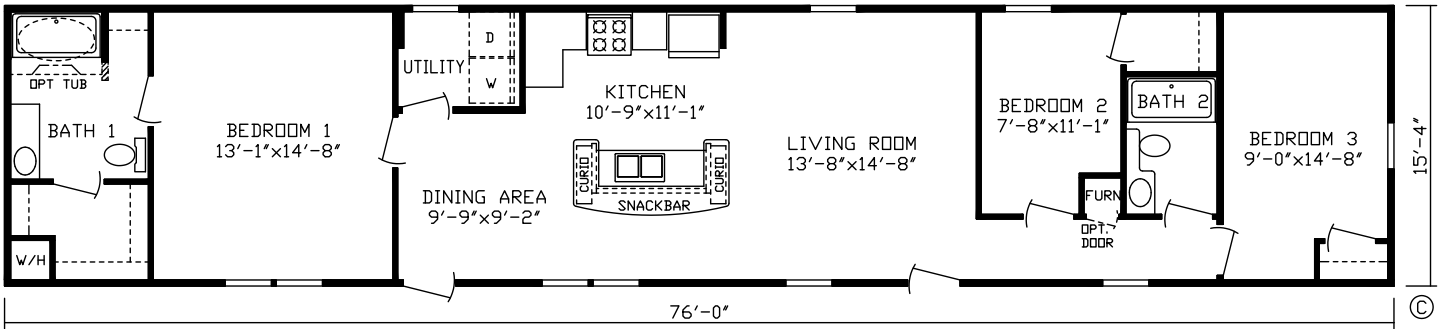
Room Option #6169

Bradly

Model #150658

3 Bed 2 Bath

1,165 Sq. Ft.

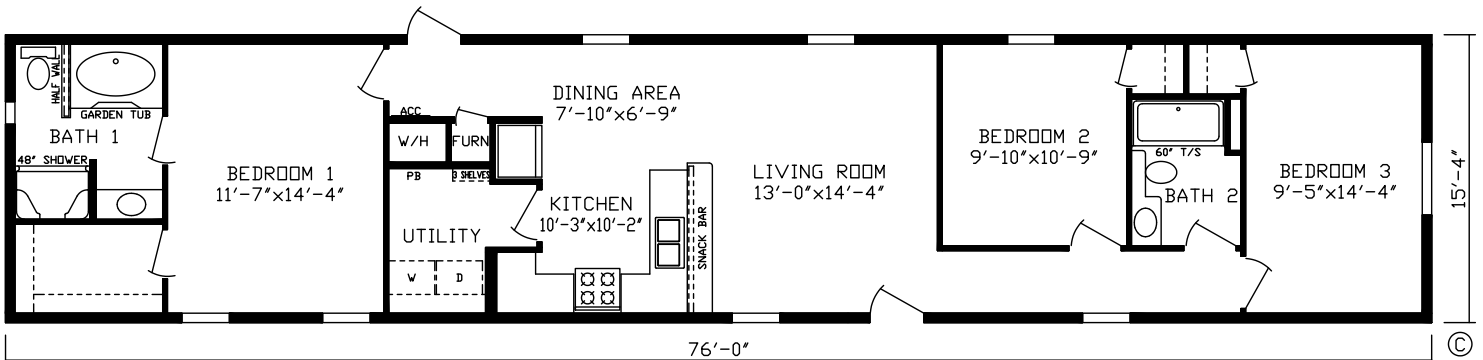


Clare

Model #150704

3 Bed 2 Bath

1,165 Sq. Ft.



Renderings may differ from floor plans

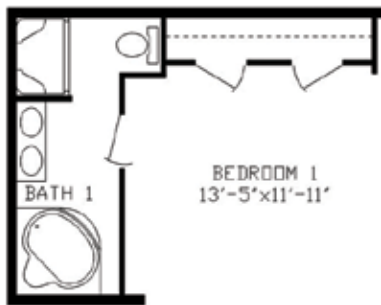
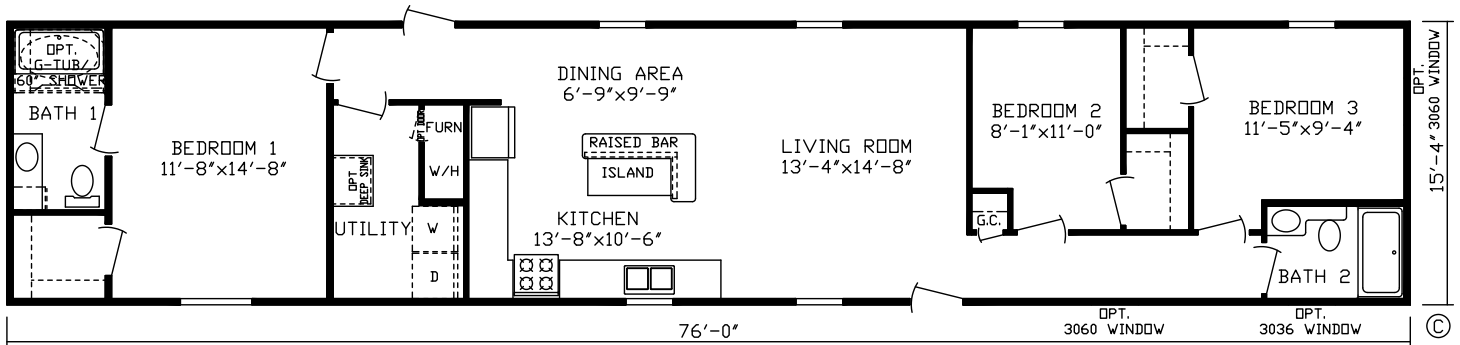
16 Wide

Kruse

Model #150607

3 Bed 2 Bath

1,165 Sq. Ft.



Martino

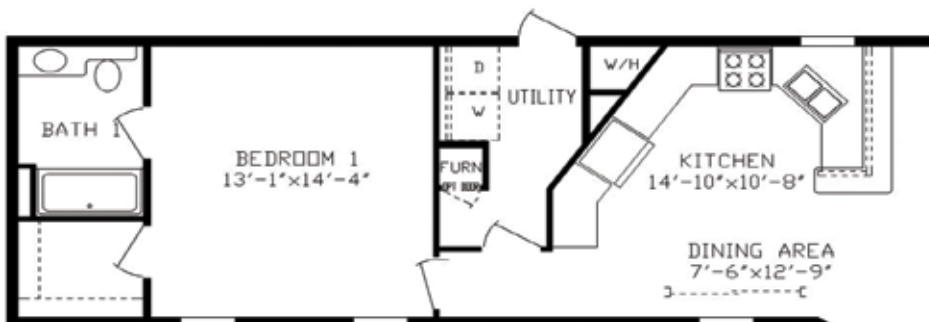
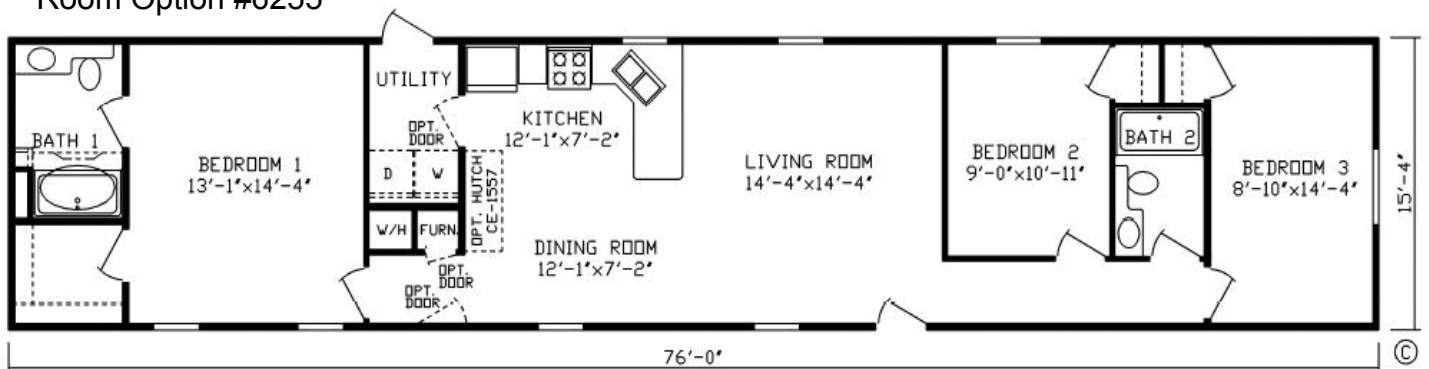
Model #150561

3 Bed 2 Bath

1,165 Sq. Ft.

Print #150593 — Reverse Aisle

Room Option #6255



Room Option #5979



Room Option #6119

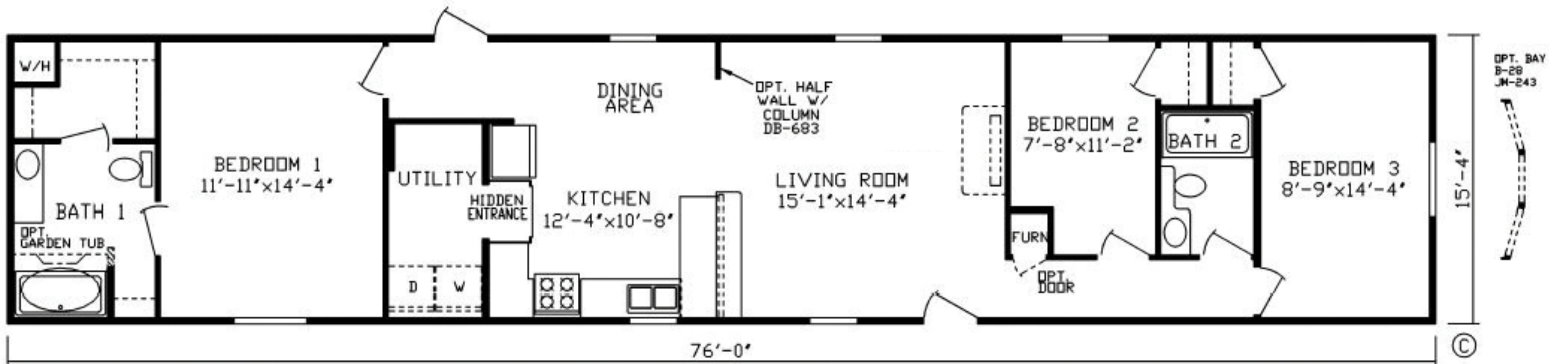
Mozart

Model #150530

3 Bed 2 Bath

1,165 Sq. Ft.

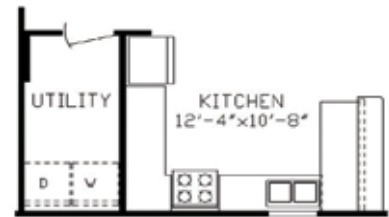
Print #150531 — Reverse Aisle



Room Option #4988



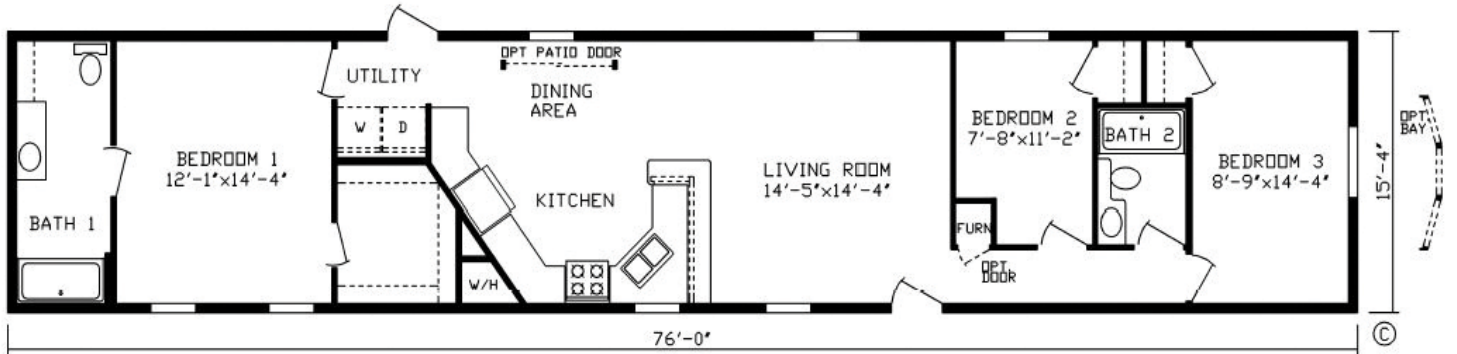
Room Option #5159



Room Option #5025



16 Wide



Lennon
 Model #150565
 3 Bed 2 Bath
 1,165 Sq. Ft.



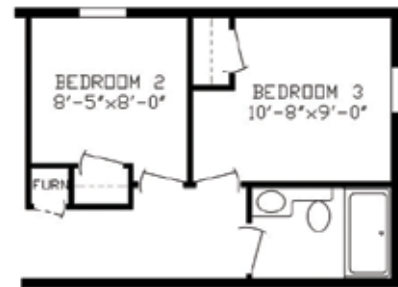
Room Option #5750



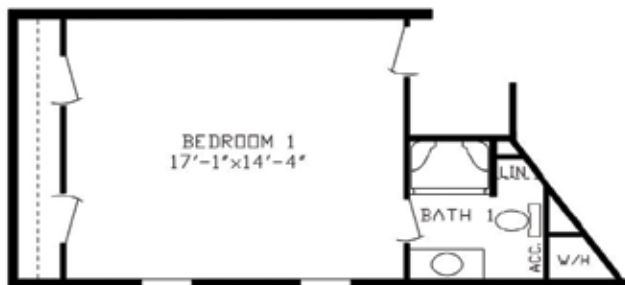
Room Option #5471



Room Option #6207



Room Option #6387



Room Option #5749



Room Option #5708

Energy Saving Standard Features

- Kinro® Low E Thermopane Windows
- OSB Exterior Sheathing
- Exterior Weatherwrap
- R-29 Roof Insulation
- 2x4 Sidewalls w/R-11 Insulation
- Gas Furnace
- Positive Operating System
- 34" x 80" Decorator 6-Panel Steel Front Door w/Storm & Deadbolt
- 32" x 76" Steel Cottage Rear Door

Exterior & Construction

- Nominal 3/12 Roof Pitch
- 8' Sidewall Height w/Flat Ceiling
- Rafters 24" O.C.
- 16" O.C. Floor Joists
- 3/4" Tongue & Groove OSB Floor Decking
- R-11 Floor Insulation
- Owens Corning® 25 Year Shingled Roof
- Royal Double 4" Dutch Vinyl Lap Siding
- Ice & Water Barrier
- Panel Shutters on Hitch End & Door Side



Floor Coverings

- Minute Man Quarry Carpet
- 5 Pound Rebond Carpet Pad
- Congoleum® Roll Goods
- Roll Goods in Baths, Kitchen, Dining Room, Utility & Foyer
- Tack Strip Carpet Installation in Living Room, Bedrooms, Halls
- Carpet Bar Where Applicable



Electrical

- Exterior GFI Weather Resistant Receptacle on Sidewall
- GFI Bath & Kitchen Receptacles
- Smoke Alarms
- Wire & Vent for Dryer
- Porch Light at Front & Rear Door
- Recessed LED Can Lights
- 100 AMP Service



Décor

- 1/2" Decorative Vinyl on Gypsum Walls
- Textured Stippled Ceilings
- 1-1/2" Door & Window Casing
- Mini Blinds Throughout
- Flat Moldings T/O
- Fabric Valances in Living Areas, Dining Room & Kitchen Foyer

Plumbing

- Plumbing for Washer
- 30 Gallon Electric Water Heater
- 7" Deep Stainless Steel Kitchen Sink
- Single Lever Kitchen Faucet w/Sprayer
- Main Water Shut-off Below Floor
- Water Heater Access Panel (Per Print)

Baths

- 1-Piece Fiberglass Tub / Shower in Baths
- Pop-Up Drains on Bath Sinks w/Overflows
- Power Exhaust Fan
- Laminated Countertops
- Lav Mirrors w/Clips
- Plastic Lav
- 3-Light Strip Above Mirror

Doors and Windows

- Easy Clean Tilt-Out Sash, Single-Hung Windows
- Kinro® White Low-E Windows
- Dead Bolt Security Lock on Steel Front Door
- Wall Mounted Door Stops
- Triple Hinged Interior Doors
- Pre-Hung 6-Panel White Interior Doors
- Nickel Interior Door Knobs



Cabinetry

- 30" Overhead Kitchen Cabinets
- Wrapped Face Frames/Wrapped Cabinetry/No Hardware/Shaker Style
- Shelf over Refrigerator w/Beadboard
- Cabinet w/Doors over Range
- Adjustable Center Shelf in Overhead Cabinets
- Bank of Drawers
- Hidden Hinges
- Dove Tail Drawer Construction
- Side Mounted Drawer Guides
- Laminate Countertop
- Shelf in Washer / Dryer Area

Appliances

- Black 18 CF Frost Free Refrigerator
- Black 30" Standard Gas Range
- 30" Power Range Hood





**2181 East Market Street
Nappanee, IN 46550
800.777.8787**

Note: Fairmont Homes reserves the right to make changes in price, colors, materials, components and specifications and to discontinue models at any time; without notice or obligation. Fairmont Homes assumes no responsibility for any error in type or print reproduction of specifications or floor plans in this brochure.

©2019 Fairmont Homes LLC, ALL RIGHTS RESERVED

Rev 01/2019