



# ADVANTAGE HOME SERIES

SINGLE-SECTION

REDMAN  HOMES®



# ABOUT US

**Redman Homes is one of the oldest and most respected homebuilders in America. Founded in 1937, Redman pioneered factory home construction and continues to lead advances in quality control, design and home value today. Through experience and innovation we've harnessed production line efficiency and, paired with our high-quality craftsmanship, created a process that delivers homes that meet our superior standards.**

## **A place to call your own**

Beyond just building you a house, we're committed to providing you and your family with a home to make memories in that will last a lifetime. Somewhere you can feel secure. A place you can call your own. A home that fits your lifestyle and has your own personal touch. Whether you're an active young family constantly on the go or empty nesters ready to simplify, just relax – we have a home that's right for you.

## **Building the best**

We build each and every home to meet or exceed a strict national or state building code, and we set even higher standards for ourselves. Focusing on the things you don't see as well as the things you do, we monitor and inspect our homes at every stage of construction. From the plumbing system to the electrical wiring, from the kitchen cabinets to the closets in the bedrooms – every home we build undergoes rigorous quality inspections to ensure we're providing you with nothing but our best.

## **More choice, more freedom**

Our vast selection of floor plans, color choices and options give you the freedom to express your personal style and fit your home around your life. Using our online Kitchen Designer, it's easy to create the kitchen of your dreams.

## **The quality you expect**

To build the best, we use the best. To meet your expectations of quality - and ours - we use only the highest-quality building materials and trusted national brand names. From insulation and fixtures to flooring and appliances, we only buy components from suppliers who share our commitment to quality. By using the best, we're confident we can build you a home with the lasting value you'll appreciate for years to come. Your housing consultant can tell you more about the specific brands used in our homes.

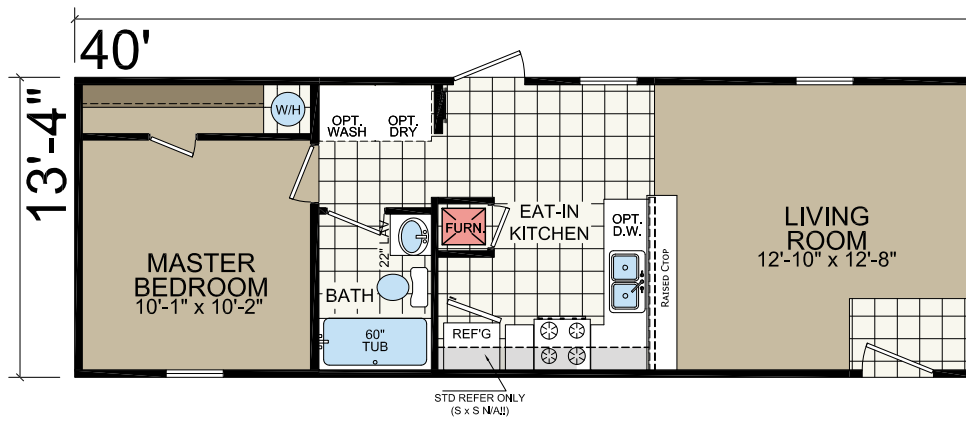


# 1444-201

14' x 40'  
1 bed-1 bath  
533 sq. ft.



Shown with Site-built Porch

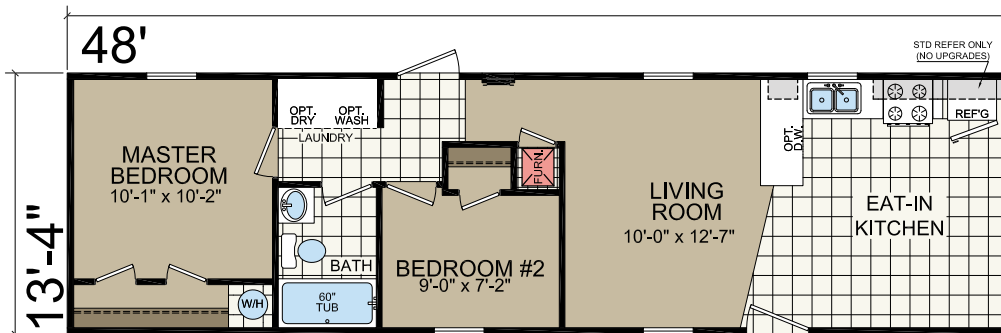


# 1452-201

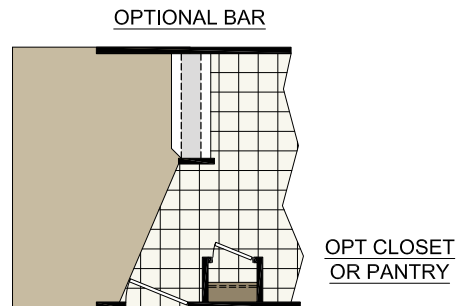
14' x 48'  
2 bed-1 bath  
640 sq. ft.



Shown with Site-built Porch



REQUIRES 2x6 Ext WALLS



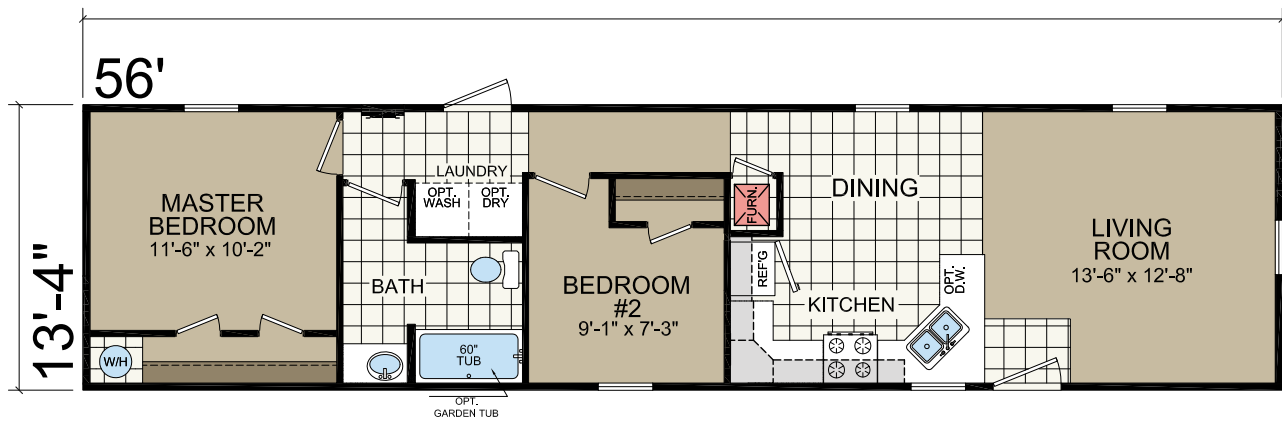


# 1460-203

14' x 56'  
2 bed-1 bath  
747sq. ft.



Shown with Site-built Porch

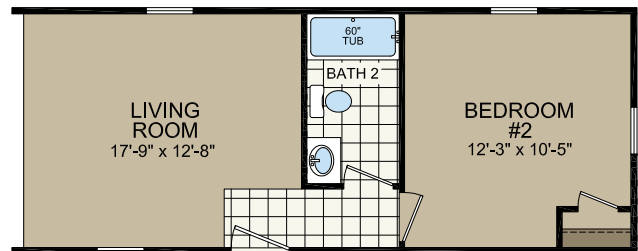
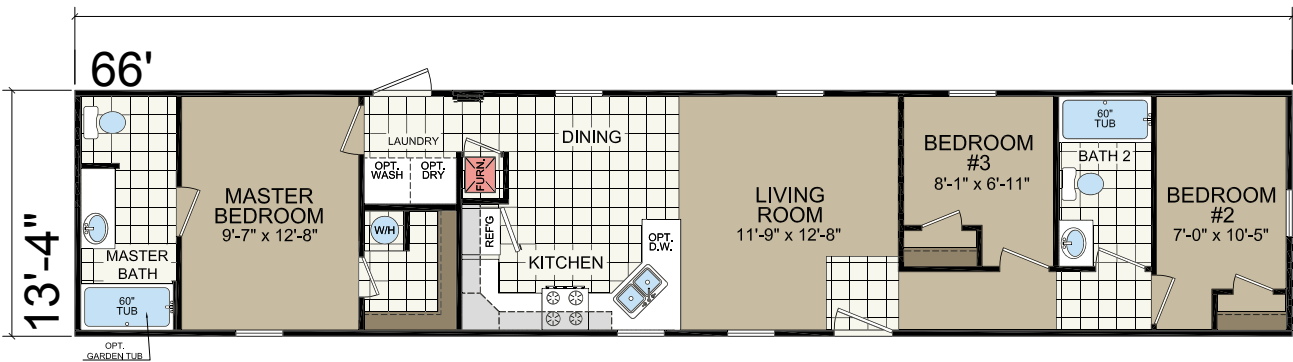


# 1470-205

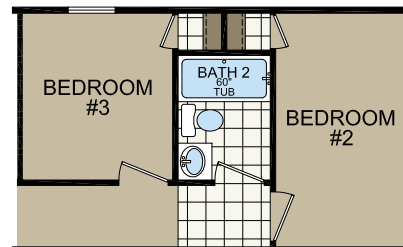
14' x 66'  
3 bed-2 bath  
880 sq. ft.



Shown with Site-built Porch



2 BEDROOM OPTION



BATH 2 OPTION  
(COMMUNITY ORDERS ONLY)

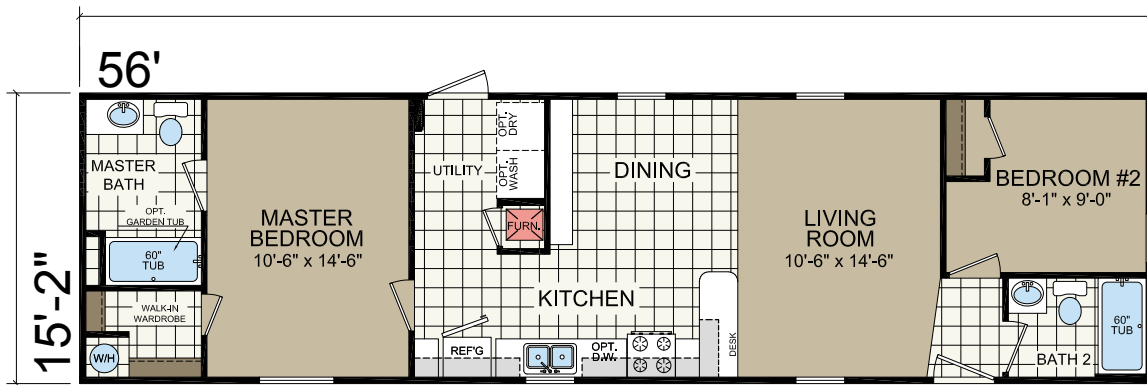


# 1660-205

16' x 56'  
2 bed-2 bath  
849 sq. ft.



Shown with Optional Master Bedroom Windows  
Shown with Site-built Porch



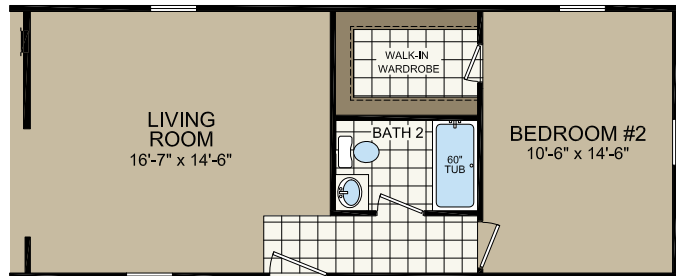
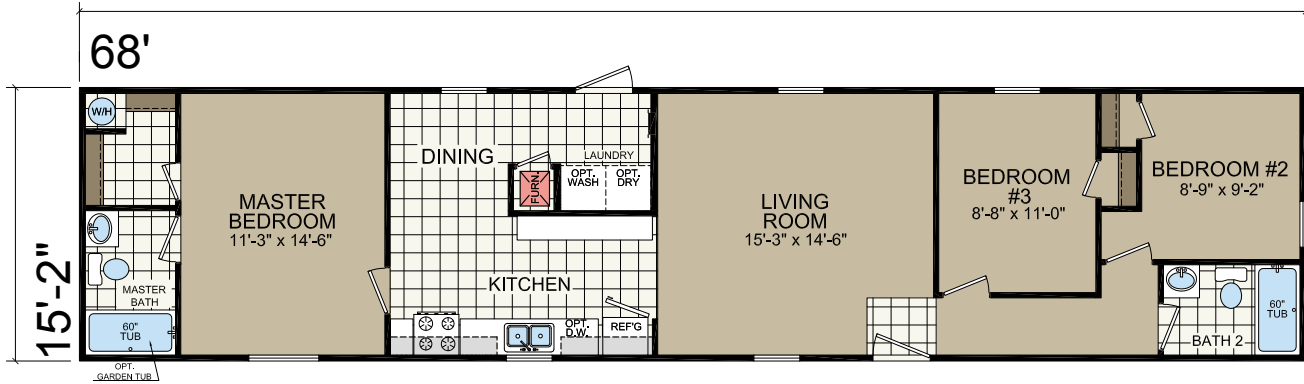


# 1672-201

16' x 68'  
3 bed-2 bath  
1031 sq. ft.



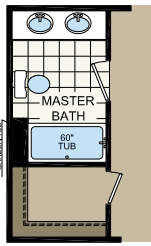
Shown with Optional Master Bedroom Windows  
Shown with Site-built Porch



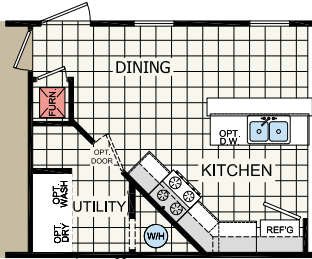
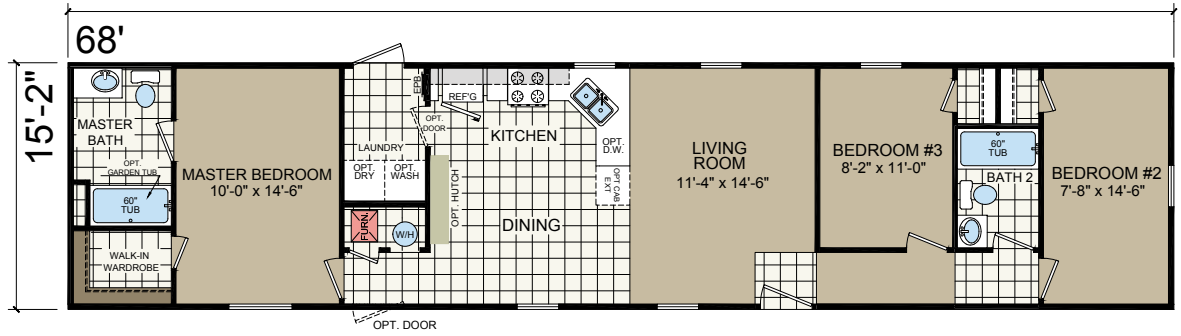
2 BEDROOM OPTION

# Family of Homes

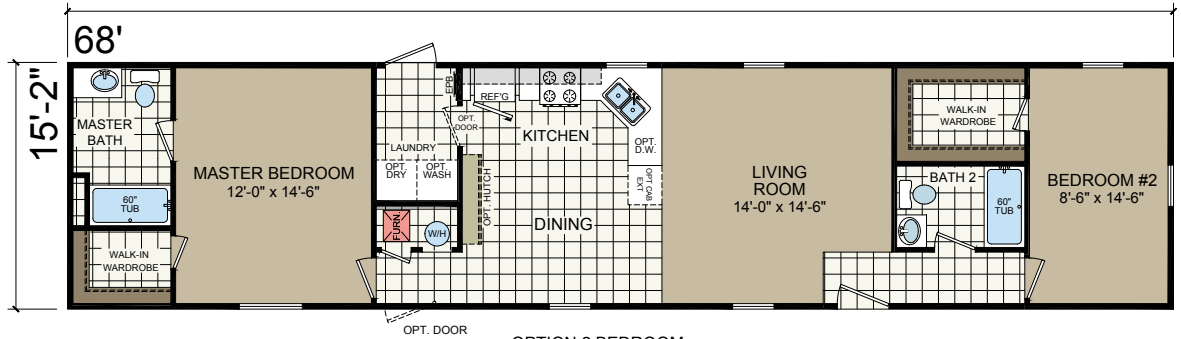
1672 205  
 16' x 68'  
 3 bed-2 bath  
 1031 sq. ft.



MASTER BATH OPTION



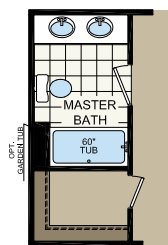
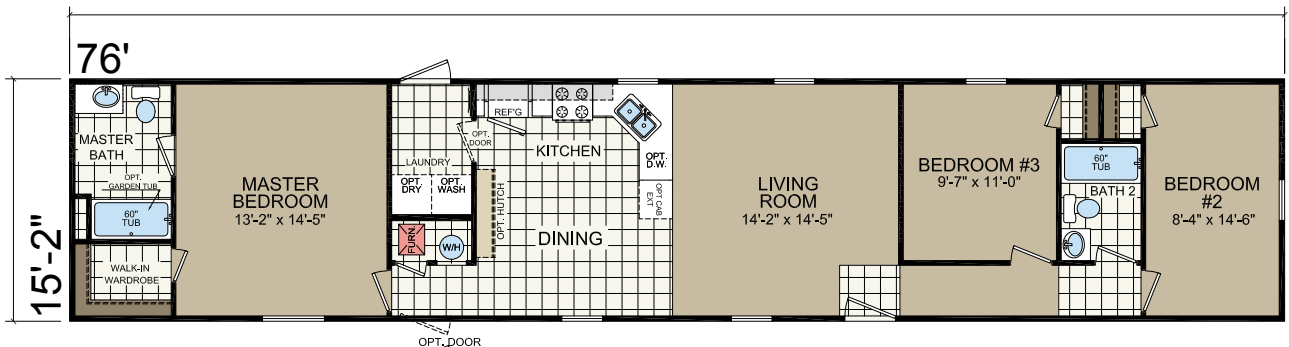
KITCHEN OPTION



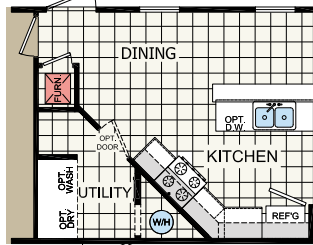
OPTION 2 BEDROOM LAYOUT

# Family of Homes

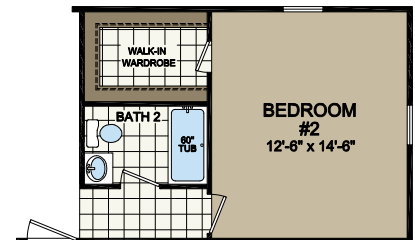
1680 203  
 16' x 76'  
 3 bed-2 bath  
 1152 sq. ft.



MASTER BATH OPTION



KITCHEN OPTION



2 BEDROOM OPTION

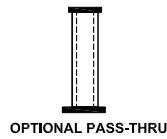
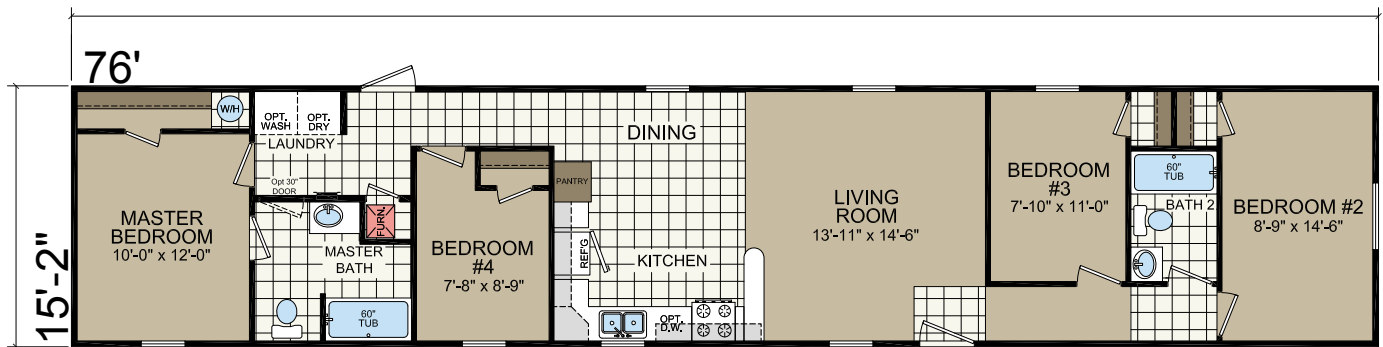


# 1680-205

16' x 76'  
4 bed-2 bath  
1153 sq. ft.



Shown with Optional Windows in Bedroom #2  
Shown with Site-built Porch



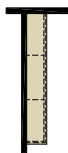
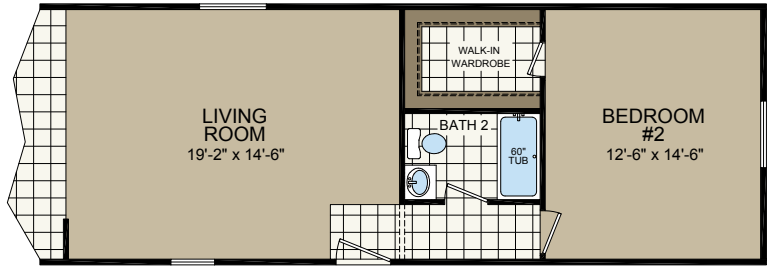
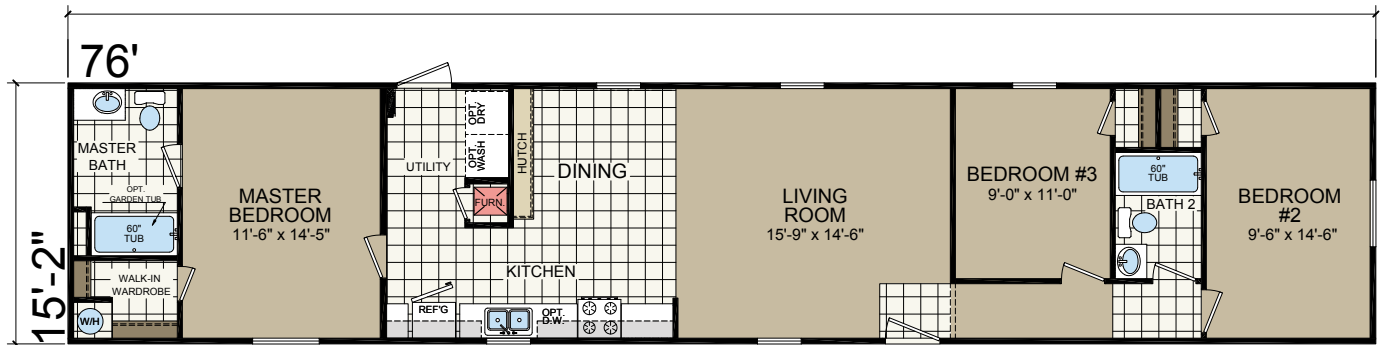
OPTIONAL PASS-THRU

1680-215

16' x 76'  
3 bed-2 bath  
1153 sq. ft.



Shown with Optional Windows in Master Bedroom & Bedroom #2  
Shown with Site-built Porch



**OPT UPGRADED HUTCH**  
INCLUDES 42" OVERHEADS IN KITCHEN

**2 BEDROOM OPTION**

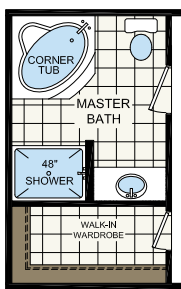
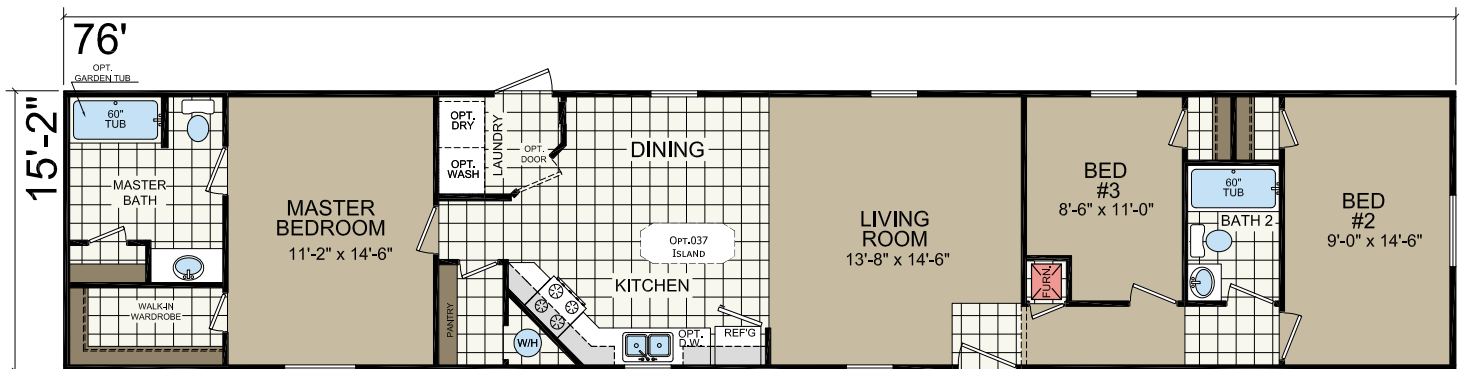


# 1680-229

16' x 76'  
3 bed-2 bath  
1153 sq. ft.



Shown with Optional Windows in Master Bedroom and Bedroom #2  
Shown with Site-built Porch



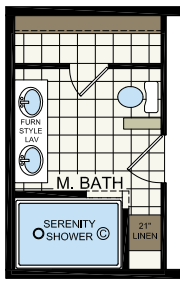
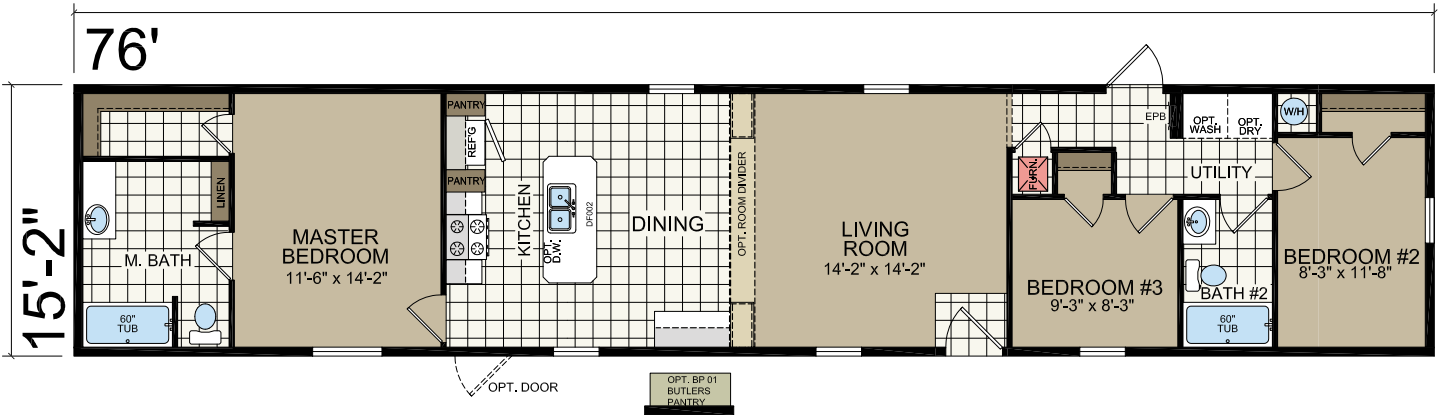
Opt MASTER BATH

1680-261

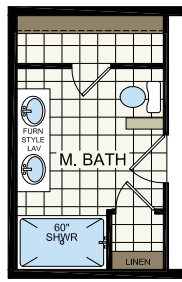
16' x 76'  
3 bed-2 bath  
1153 sq. ft.



Shown with Optional Endwall Treatment and Site-built Porch by Others



OPT. SERENITY BATH

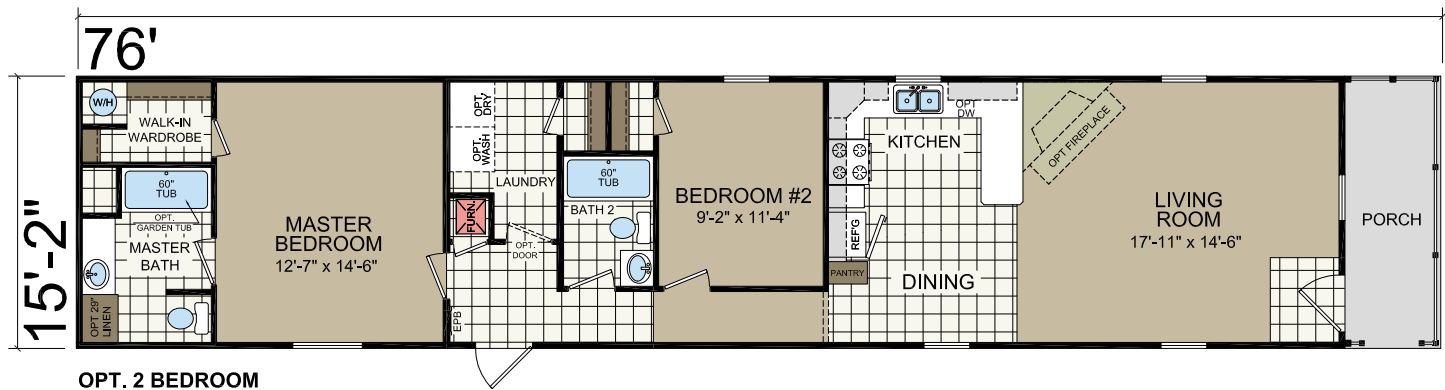
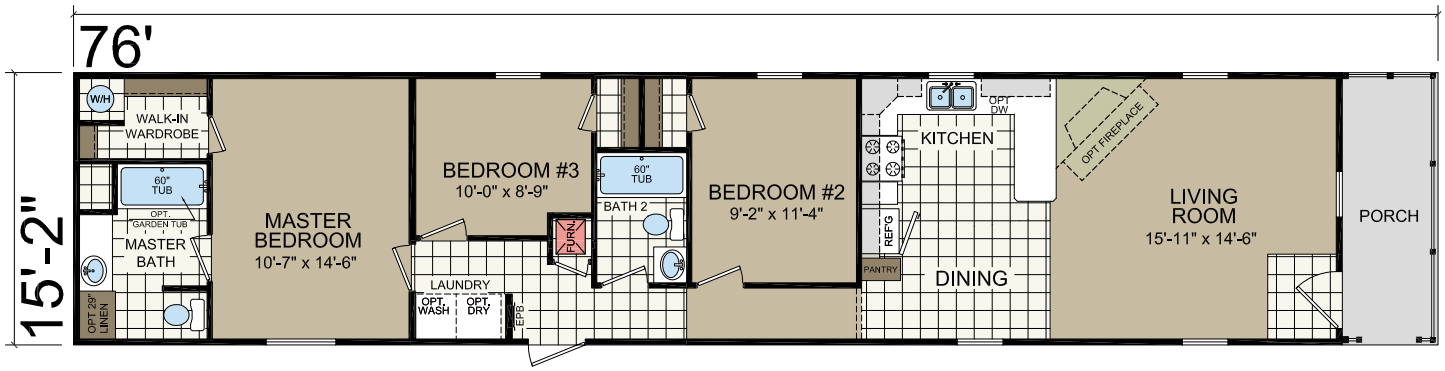


OPT. MASTER BATH #2

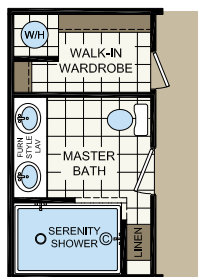


# 1680-265

16' x 76'  
3 bed-2 bath  
1072 sq. ft.



**OPT. 2 BEDROOM**



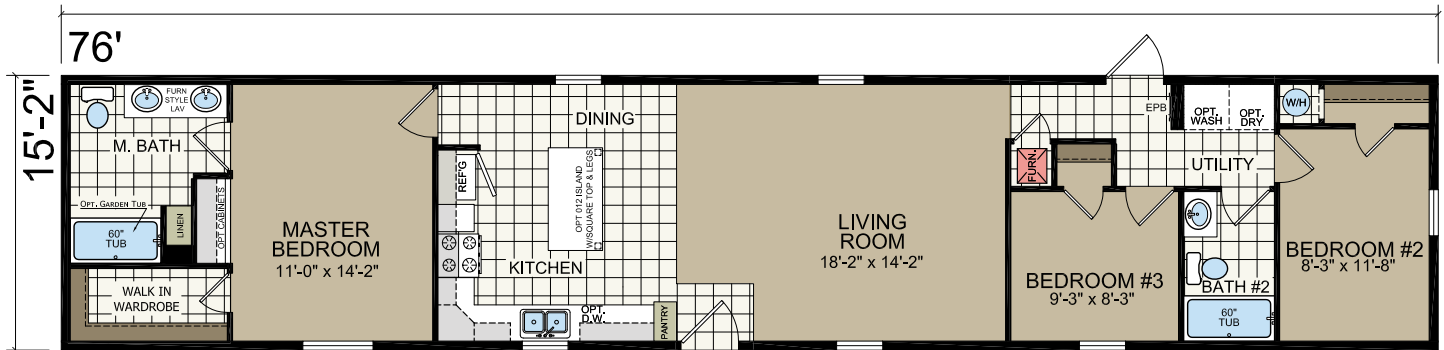
**OPT. SERENITY BATH**

1680-271

16' x 76'  
3 bed-2 bath  
1153 sq. ft.



Shown with Optional Endwall Treatment and Site-built Porch by Others



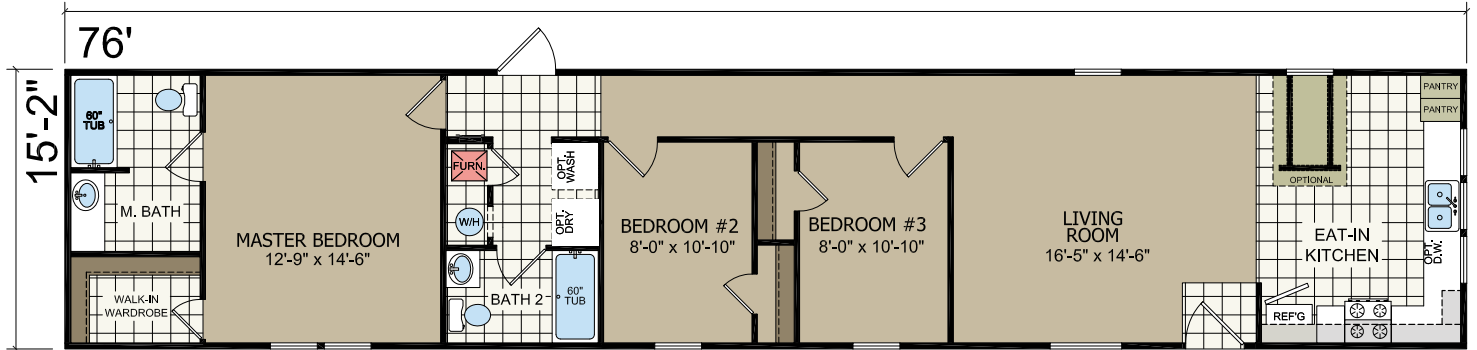


# 1680-271



1680-273

16' x 76'  
3 bed-2 bath  
1153 sq. ft.





# ADVANTAGE SINGLES II

## STANDARD FEATURES

### STRUCTURAL

Recessed Frame  
Detachable Hitch  
48" OC Outriggers  
2 x 4 Exterior Sidewalls - 16" OC  
2 x 6 Floor Joist - 16" OC (14')  
2 x 8 Floor Joist - 16" OC (16')  
R-11 Sidewall Insulation  
R-11 Floor Insulation w / Additional  
    R-11 Outside I-Beams  
R-33 Roof Insulation - 14'  
R-28 Roof Insulation - 16'  
5/8" OSB Decking T & G  
7/16" OSB Roof Sheathing  
30lb PSF Roof Load

### INTERIOR FINISH

8' Flat Ceilings  
Main Panel T/O  
Accent Panels - Choice of 1  
    Pattern per Home (Designers Choice)  
13-oz. Live Wire Carpet  
Tack Strip  
5lb Rebond Carpet Pad  
Linoleum - Factory Designers Choice  
Wire Shelving in Closets  
Smoke Alarms w / Battery Backup  
1-3/4" Door Casing  
1-3/4" Ceiling Cove  
MDF Door Jambs  
Window Jambs  
Formica Countertops  
Self-Edge Countertops  
1-3/4" Wrapped (618) Window &  
    Door Casing  
Window & Door Jamb Wrapped MDF

### EXTERIOR

8' Sidewalls  
Nominal 3/12 Roof Pitch  
25-Year Shingles  
Storm Board Sheathing  
Double 4" Vinyl Siding  
White Aluminum Fascia  
White Vented Soffit  
Raised Panel Shutters - FDS / Hitch End  
Exterior Light - Front Door  
Exterior Light - Rear Door

### KITCHEN / BATHROOMS

Standard Electric Range  
30" Range Hood  
18" CF Over/Under Refrigerator  
30" O/H Cabinets w / Cove  
Fixed Shelf in Overhead Cabs  
Corner Overhead Cabinet (VBP)  
Wrapped Flat Panel Cabinet Doors  
Wrapped Cabinet Stiles  
Single Bank of Drawers - VBP  
Shelf Over Refrigerator  
Lauan Side Panels  
2 Handle w/Sprayer at Kitchen  
7" Stainless Steel Kitchen Sink  
Fiberglass Tub/Shower (VBP)  
Round Commode  
Single Handle Tub/Shower Faucets  
2 Handle Chrome Lav Faucets  
Lighted Bath Fan  
Cabinet Knobs Throughout  
China Lav Bowls at Baths  
Pivot Shower Door for 60" or 48"  
    Showers - VBP

### WINDOWS & DOORS

6-Panel Front Door w / Storm  
Blank Fiberglass Rear Door  
Low E Single Hung Vinyl 6/6 Gridded  
    Windows (sized VBP)  
2" Mini Blinds Throughout  
6-Panel White Interior Doors  
Nickel Round Knobs  
Wood Furnace Door  
Valances at Living Areas

### HEATING / PLUMBING / ELECTRICAL

Electric Furnace  
Aluminum Heat Ducts  
In-Line Floor Registers  
100-AMP Service  
(1) Exterior Recept  
All Copper Wiring  
Plumb for Washer  
Wire for Electric Dryer  
Washer/Dryer Shelf  
PEX Water Lines  
30-Gallon Electric Water Heater  
1 Exterior Frost-Free Faucet  
Main Water Shut Off



308 Sheridan Drive | Topeka, IN 46571

[www.redmanhomesofindiana.com](http://www.redmanhomesofindiana.com)

CHAMPION®

MANUFACTURED BEAUTIFULLY™