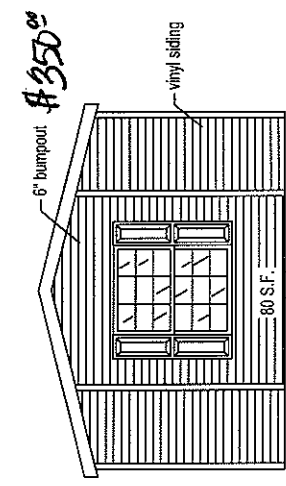
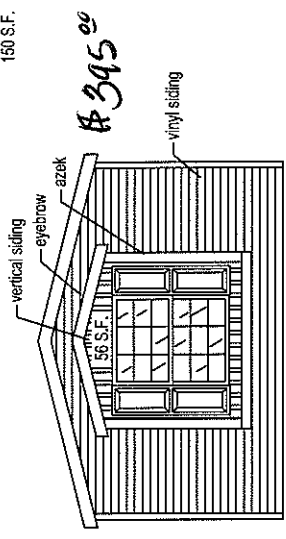


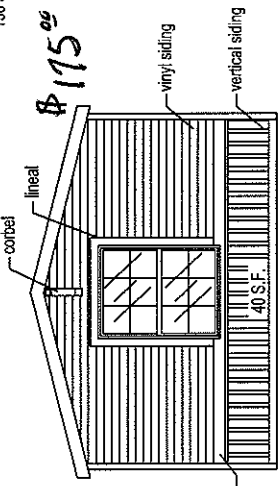
SINGLE WIDE ELEVATION "S1"
 AZEK TRIM & CORBEL
 (DOESN'T INCLUDE 46" WINDOW)
 150 S.F.



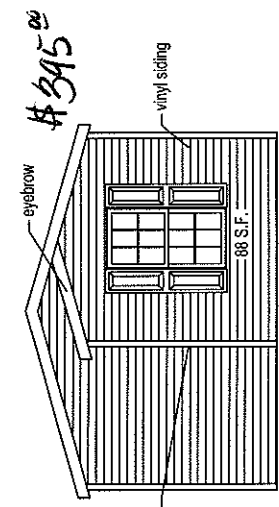
SINGLE WIDE ELEVATION "S2"
 SINGLE WIDE BOX OUT BAY
 (DOESN'T INCLUDE 46" WINDOW/SHUTTERS)
 150 S.F.



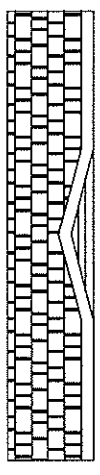
SINGLE WIDE ELEVATION "S3"
 FAUX BUMPOUT, AZEK TRIM, VERTICAL SIDING & EYEBROW
 (DOESN'T INCLUDE 46" WINDOW/SHUTTERS)
 150 S.F.



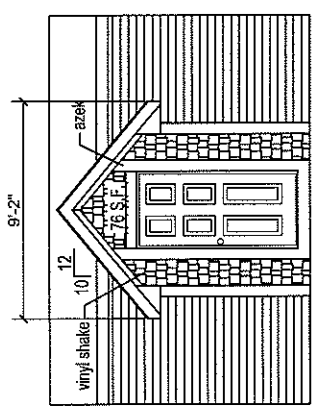
SINGLE WIDE ELEVATION "S4"
 VERTICAL SIDING, CORBEL, LINEALS
 (DOESN'T INCLUDE 46" WINDOW)
 150 S.F.



SINGLE WIDE ELEVATION "S5"
 SINGLE WIDE EYEBROW ELEVATION
 FAUX BUMPOUT, EYEBROW (DOESN'T INCLUDE SHUTTERS)
 150 S.F.

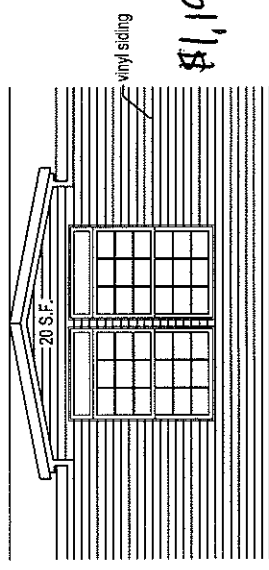


SINGLE WIDE ELEVATION "S6"
 6' HUD DORMER
 10 S.F.



9' HUD DORMER "S7"
 9' DROP EAVE DORMER
 7' FAUX BUMPOUT
 AZEK TRIM/SHAKE

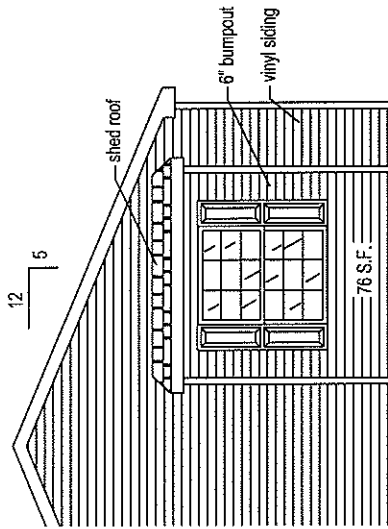
AVAILABLE ON:
 - 8' OR 8.5' CEILING HEIGHT
 - WINDOWS/DOORS ARE NOT INCLUDED.
 \$695.00



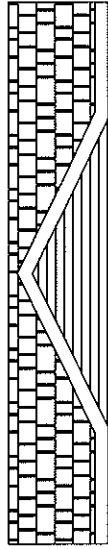
TOWER DORMER "S8"
 AVAILABLE ON 16 WIDES, 8' AND 8'6"
 INCLUDES 4661'S AND 46X12 TRANSOMS
 MULLED TO LOWER WINDOWS
 DRYWALL PRODUCT ONLY

\$1,195.00

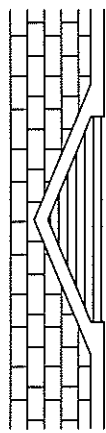
| | | | |
|---|--|---|---|
| MODIFICATIONS 1 REVISED ELEVATION #2 REMOVED AZEK JMD 06-05-15 2 SW ELY #4 ADD SHUTTERS AJG 12-07-15 3 2016 UPDATES JMD 01-11-16 | | MODEL: Ext Options (HUD) CHAMPION REDMAN/DUTCH/FORTUNE | SHEET: SGL 1 |
| | | TITLE: SINGLE EXTERIORS | DRAWN BY: TCooley DATE: 01-15-15 SCALE: 1/8" = 1'-0" |
| APPROVER'S SEAL | | PROPRIETARY AND CONFIDENTIAL THESE DIMENSIONS AND SPECIFICATIONS ARE ORIGINAL PROPRIETARY AND CONFIDENTIAL MATERIALS OF CHAMPION COPYRIGHT © 1976-2008 BY CHAMPION | |
| | | 308 SHERIDAN DRIVE TOPEKA, IN 46571 REV. C | |



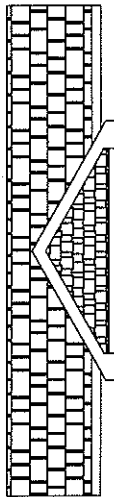
BOX BAY "D15"
 W/ SHED ROOF, GABLE END ONLY
 (DOESN'T INCLUDE 46"
 WINDOW/SHUTTERS)
\$350⁰⁰



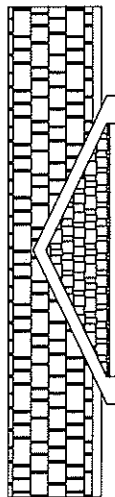
12' DORMER "D16" **\$295⁰⁰**
 REQUIRES CRS
 22 S.F.



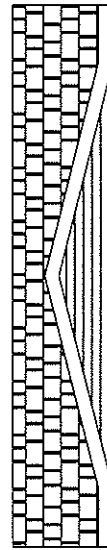
10' HUD DORMER "D17" **\$350⁰⁰**
 15 S.F.



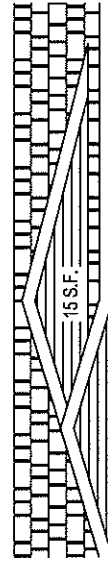
10' HUD DROP EAVE DORMER "D18" **\$395⁰⁰**
 (SHAKE NOT INCLUDED)
 16 S.F.



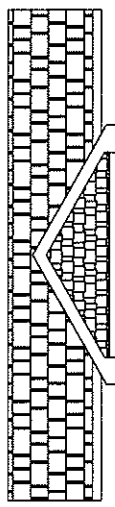
12' HUD DROP EAVE DORMER "D19" **\$445⁰⁰**
 REQUIRES CRS
 (SHAKE NOT INCLUDED)
 20 S.F.



16' DORMER "D20" **\$395⁰⁰**
 20 S.F.



16' EYEBROW DORMER "D21" **\$795⁰⁰**
 REQUIRES CRS
 25 S.F.



8' HUD DROP EAVE DORMER "D22" **\$345⁰⁰**
 REQUIRES CRS
 (SHAKE NOT INCLUDED)
 12 S.F.



308 SHERIDAN DRIVE TOPEKA, IN 46571

APPROVER'S SEAL

MODIFICATIONS

| | | | |
|---|---------------------------------|-----|----------|
| 5 | Omitted Singlewide elevations | AG | 01-31-14 |
| 6 | BOX BAY FULL HEIGHT | JMD | 05-03-15 |
| 7 | ADDED NEW 20' EYEBROW ELEVATION | JMD | 10-13-15 |
| 8 | 2016 UPDATES | JMD | 01-11-16 |

PROPRIETARY AND CONFIDENTIAL
 THESE DRAWINGS AND SPECIFICATIONS ARE ORIGINAL
 PROPRIETARY AND CONFIDENTIAL MATERIALS OF CHAMPION
 COPYRIGHT © 1976-2008 BY CHAMPION

MODEL: Ext Options (HUD)
 CHAMPION REDMAN/DUTCH/FORTUNE

TITLE: 5/12 DBL EXTERIORS

DRAWN BY: T.Cowley

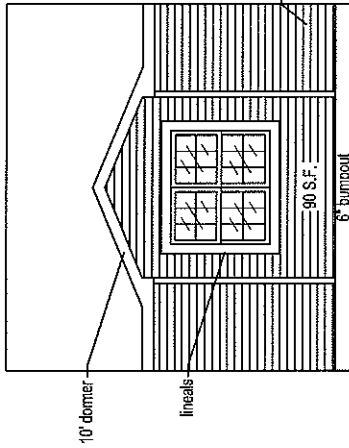
SCALE: 1/8" = 1'-0"

DATE: 01-15-15

SHEET:

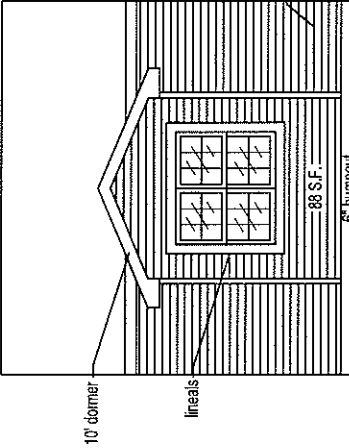
DBL 2

REV. G



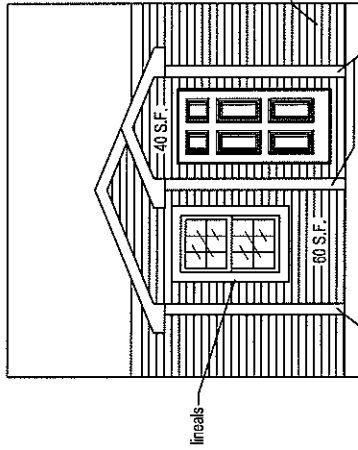
AVAILABLE ON:
 - 3/12 OR 5/12 ROOF PITCH
 - 8' OR 8.5' CEILING HEIGHT
 - 96" WIDE BUMPOUT ONLY
 w/ 3061 WINDOWS ONLY.

ELEVATION "D23"
 10' DORMER
 6" BUMPOUT
 \$525^{ea}



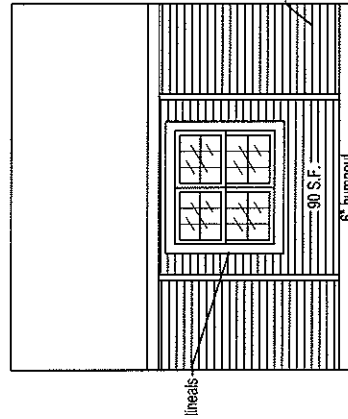
AVAILABLE ON:
 - 3/12 OR 5/12 ROOF PITCH
 - 8' OR 8.5' CEILING HEIGHT
 - 96" WIDE BUMPOUT ONLY
 w/ 3061 WINDOWS ONLY.

ELEVATION "D24"
 10' DROP EAVE DORMER
 6" BUMPOUT
 \$570^{ea}



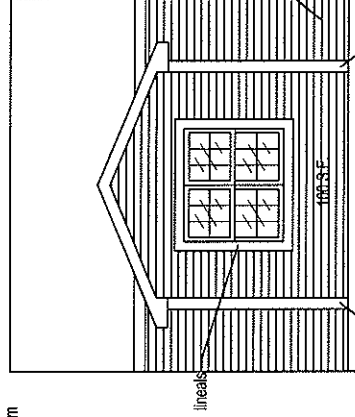
AVAILABLE ON:
 - 3/12 OR 5/12 ROOF PITCH
 - 8' CEILING HEIGHT
 - WINDOWS/DOORS ARE NOT INCLUDED.
 - ACTUAL WINDOW/DOOR LAYOUT MAY DIFFER FROM WHAT IS SHOWN.

ELEVATION "D25"
 12' DROP EAVE DORMER
 10' FAUX BUMPOUT
 \$695^{ea}



AVAILABLE ON:
 - 3/12 OR 5/12 ROOF PITCH
 - 8' OR 8.5' CEILING HEIGHT
 - 96" WIDE BUMPOUT ONLY
 w/ 3061 WINDOWS ONLY.

ELEVATION "D26"
 6" BUMPOUT
 \$175^{ea}



AVAILABLE ON:
 - 3/12 OR 5/12 ROOF PITCH
 - 8' CEILING HEIGHT
 - WINDOWS ARE NOT INCLUDED.
 - ACTUAL WINDOW/DOOR LAYOUT MAY DIFFER FROM WHAT IS SHOWN.

ELEVATION "D27"
 12' DROP EAVE DORMER
 10' FAUX BUMPOUT
 \$570^{ea}



308 SHERIDAN DRIVE TOPEKA, IN 46571

APPROVER'S SEAL

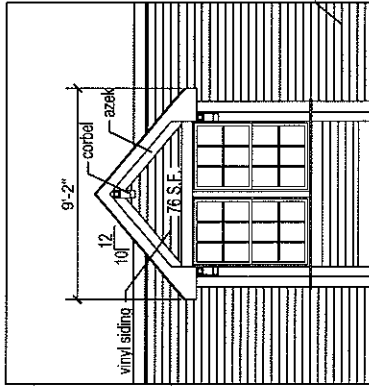
MODIFICATIONS

SHEET:

| | | | |
|--|-----|----------|---|
| 1 2016 UPDATES | JMD | 01-11-16 | MODEL: Ext Options (HUD) CHAMPION REDMAN/DUTCHFORTUNE |
| | | | TITLE: 3/12 OR 5/12 DBL EXTERIORS |
| PROPRIETARY AND CONFIDENTIAL THESE DRAWINGS AND SPECIFICATIONS ARE ORIGINAL PROPRIETARY AND CONFIDENTIAL MATERIALS OF CHAMPION. COPYRIGHT © 1976-2008 BY CHAMPION | | | DRAWN BY: JDRAKE DATE: 01/11/2016 SCALE: 1/8" = 1'-0" |

DBL 3

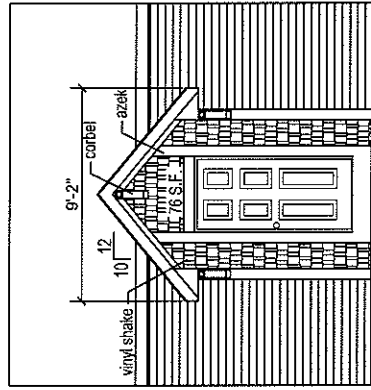
REV. A



AVAILABLE ON:
 - 3/12 OR 5/12 ROOF PITCH
 - 8" OR 8.5" CEILING HEIGHT
 - 30" WIDE WINDOWS ONLY
 - WINDOWS/DOORS ARE NOT INCLUDED.

vinyl siding

9' HUD DORMER "D28"
 9' DROP EAVE DORMER
 7' FAUX BUMPOUT
 AZEK TRIM/CORBELS
\$815^{ea}

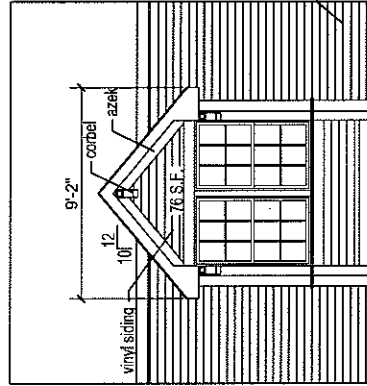


9' HUD DORMER "D30"
 9' DROP EAVE DORMER
 7' FAUX SHAKE BUMPOUT
 AZEK TRIM/SHAKE CORBELS
\$695^{ea}

AVAILABLE ON:
 - 3/12 OR 5/12 ROOF PITCH
 - 8" OR 8.5" CEILING HEIGHT
 - 30" WIDE WINDOWS ONLY
 - WINDOWS/DOORS ARE NOT INCLUDED.

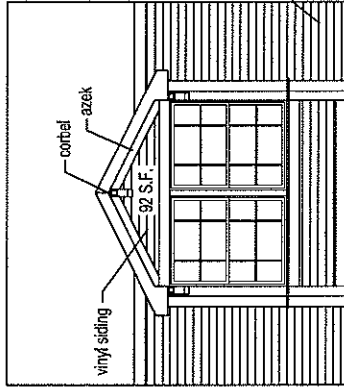
vinyl siding

9' HUD DORMER "D31"
 9' DROP EAVE DORMER
 7'X6" BUMPOUT
 AZEK TRIM/CORBELS
\$1,050^{ea}



AVAILABLE ON:
 - 3/12 OR 5/12 ROOF PITCH
 - 8" OR 8.5" CEILING HEIGHT
 - 46" WIDE WINDOWS ONLY
 - WINDOWS/DOORS ARE NOT INCLUDED.

vinyl siding

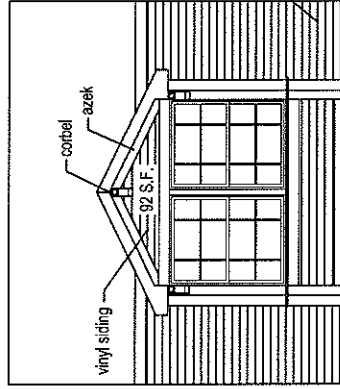


AVAILABLE ON:
 - 3/12 OR 5/12 ROOF PITCH
 - 8" OR 8.5" CEILING HEIGHT
 - 46" WIDE WINDOWS ONLY
 - WINDOWS/DOORS ARE NOT INCLUDED.

vinyl siding

ELEVATION "D29"
 10' DROP EAVE DORMER
 9'6" FAUX BUMPOUT
 AZEK TRIM/CORBELS
\$910^{ea}

AVAILABLE ON:
 - 3/12 OR 5/12 ROOF PITCH
 - 8" OR 8.5" CEILING HEIGHT
 - WINDOWS/DOORS ARE NOT INCLUDED.

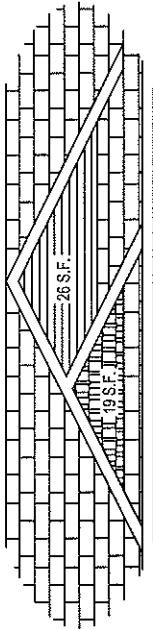


AVAILABLE ON:
 - 3/12 OR 5/12 ROOF PITCH
 - 8" OR 8.5" CEILING HEIGHT
 - 46" WIDE WINDOWS ONLY
 - WINDOWS/DOORS ARE NOT INCLUDED.

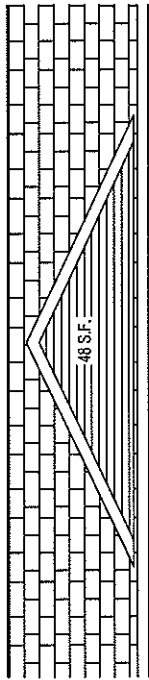
vinyl siding

ELEVATION "D32"
 10' DROP EAVE DORMER
 9'6"X6" BUMPOUT
 AZEK TRIM/CORBELS
\$1,095^{ea}

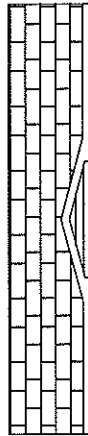
| | | | | | | | |
|---|--|----------------------|--|---|--|----------------------------|--|
| <p>APPROVER'S SEAL</p> | | <p>MODIFICATIONS</p> | | <p>MODEL: Ext Options (HUD) CHAMPION REDMANDUTCH-FORTUNE</p> | | <p>SHEET: DBL 4</p> | |
| <p>1 2016 UPDATES</p> | | <p>JMD 01-11-16</p> | | <p>TITLE: 3/12 OR 5/12 DBL EXTERIORS</p> | | <p>DATE: 01/11/2016</p> | |
| <p>PROPRIETARY AND CONFIDENTIAL THESE DRAWINGS AND SPECIFICATIONS ARE ORIGINAL PROPRIETARY AND CONFIDENTIAL MATERIALS OF CHAMPION. COPYRIGHT © 1976-2008 BY CHAMPION</p> | | | | <p>DRAWN BY: J.DRAKE</p> | | <p>SCALE: 1/8" = 1'-0"</p> | |
| <p>CHAMPION</p> | | | | <p>308 SHERIDAN DRIVE TOPEKA, IN. 46571</p> | | <p>REV. A</p> | |



SHIP LOOSE DOUBLE DORMER "M1"
 \$855^{ea}
 5/12 OR 7/12 ROOF, ANY WALL HEIGHT, SHAKE
 NOT INCLUDED



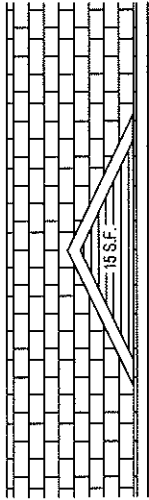
SHIP LOOSE 20' DORMER "M3"
 \$795^{ea}
 5/12 OR 7/12 ROOF, ANY WALL HEIGHT



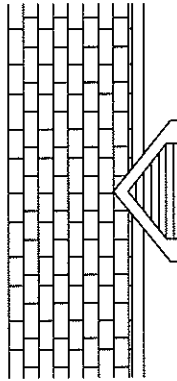
6' DORMER "M5"
 \$200^{ea}
 ANY ROOF PITCH, ANY WALL HEIGHT



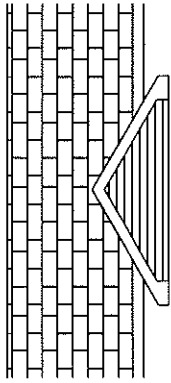
DOUBLE DORMER "M2"
 \$855^{ea}
 3/12 ROOF ONLY
 MAY BE USED WITH 8'X6" BUMPOUT



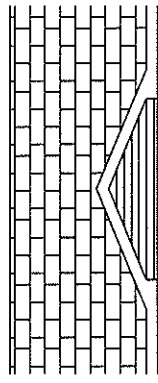
SHIP LOOSE 12' DORMER "M4"
 \$495^{ea}
 5/12 OR 7/12 ROOF, ANY WALL HEIGHT



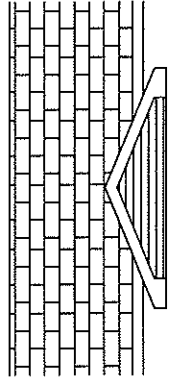
6' DROP EAVE DORMER "M6"
 \$200^{ea}
 ANY ROOF PITCH, ANY WALL HEIGHT



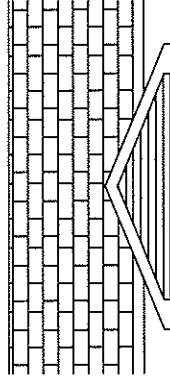
8' DROP EAVE DORMER "M7"
 \$315^{ea}
 ANY ROOF PITCH, ANY WALL HEIGHT



10' DORMER "M8"
 \$350^{ea}
 3/12 OR 5/12 ROOF PITCH, 8' WALL HEIGHT



10' DROP EAVE DORMER "M9"
 \$395^{ea}
 ANY ROOF PITCH, ANY WALL HEIGHT



12' DROP EAVE DORMER "M10"
 \$445^{ea}
 3/12, 5/12 ROOF PITCH, 8' WALL HEIGHT



308 SHERIDAN DRIVE TOPEKA, IN 46571

APPROVER'S SEAL

| MODIFICATIONS | |
|----------------------------------|--------------|
| 1 ADDED 26'-8" ADD-ON BAY OPTION | 03-24-14 |
| 2 CLARIFIED BAYS | 04-17-14 |
| 3 REVISED ELEVATION "D" | JMD 10-13-16 |
| 4 CLARIFIED DORMERS | JMD 01-12-16 |

PROPRIETARY AND CONFIDENTIAL
 THESE DRAWINGS AND SPECIFICATIONS ARE ORIGINAL
 PROPRIETARY AND CONFIDENTIAL MATERIALS OF CHAMPION.
 COPYRIGHT © 1976-2008 BY CHAMPION

MODEL: MOD ONLY DORMERS

TITLE:

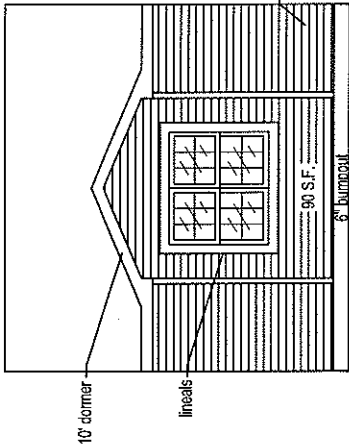
DATE: 04-29-11

SCALE: NTS

MD-01

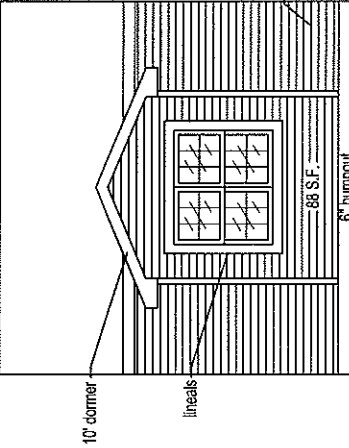
REV. D

SHEET:



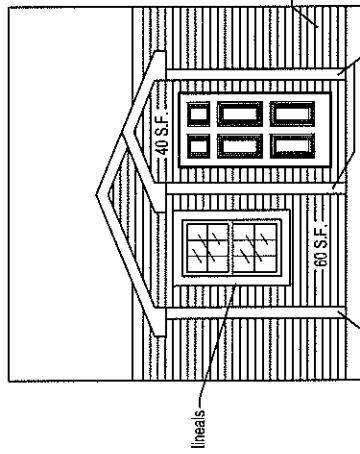
AVAILABLE ON:
 - 3/12 OR 5/12 ROOF PITCH
 - 8" CEILING HEIGHT
 - 96" WIDE BUMP OUT ONLY
 w/ 3661 WINDOWS ONLY.

ELEVATION "M11"
 10' DORMER
 6" BUMP OUT
 \$525⁰⁰



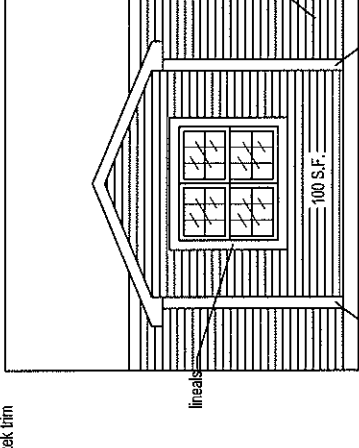
AVAILABLE ON:
 - ANY ROOF PITCH
 - 8" OR 9" CEILING HEIGHT
 - 96" WIDE BUMP OUT ONLY
 w/ 3661 WINDOWS ONLY.

ELEVATION "M12"
 10' DROP EAVE DORMER
 6" BUMP OUT
 \$570⁰⁰



AVAILABLE ON:
 - 3/12 OR 5/12 ROOF PITCH
 - 8" CEILING HEIGHT
 - WINDOWS/DOORS ARE NOT INCLUDED.
 - ACTUAL WINDOW/DOOR LAYOUT MAY DIFFER FROM WHAT IS SHOWN.

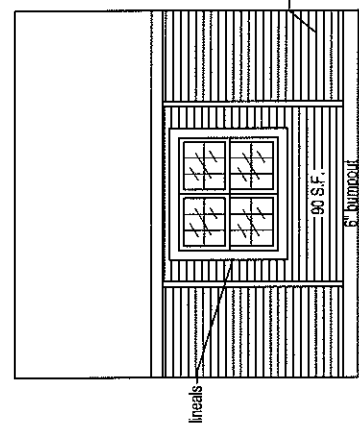
ELEVATION "M13"
 12' DROP EAVE DORMER
 10' FAUX BUMP OUT
 \$645⁰⁰



AVAILABLE ON:
 - 3/12 OR 5/12 ROOF PITCH
 - 8" CEILING HEIGHT
 - WINDOWS ARE NOT INCLUDED.
 - ACTUAL WINDOW/DOOR LAYOUT MAY DIFFER FROM WHAT IS SHOWN.

ELEVATION "M15"
 12' DROP EAVE DORMER
 10' FAUX BUMP OUT
 \$570⁰⁰

28 WIDE



AVAILABLE ON:
 - ANY ROOF PITCH
 - 8" OR 9" CEILING HEIGHT
 - 96" WIDE BUMP OUT ONLY
 w/ 3661 WINDOWS ONLY.

ELEVATION "M14"
 6" BUMP OUT
 \$175⁰⁰

308 SHERIDAN DRIVE TOPEKA, IN 46571

APPROVER'S SEAL

MODEL: MOD ONLY DORMERS

SHEET: MD-02

TITLE: 28 WIDE DORMERS

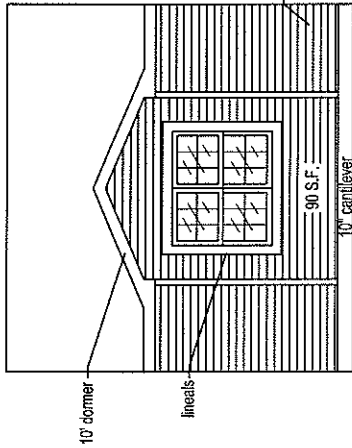
DATE: 04-29-11

SCALE: NTS

REV. D

| MODIFICATIONS | DATE |
|----------------------------------|--------------|
| 1 ADDED 26'-8" ADD-ON BAY OPTION | 03-21-14 |
| 2 CLARIFIED BAYS | 04-17-14 |
| 3 REVISED ELEVATION "D" | JMD 10-13-15 |
| 4 CLARIFIED DORMERS | JMD 01-12-16 |

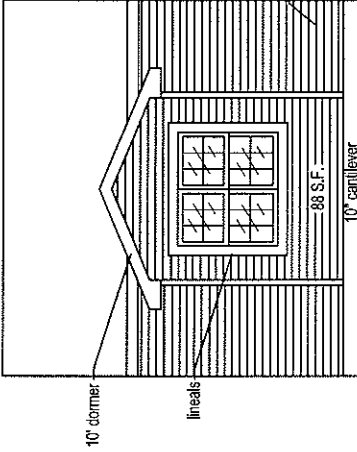
PROPRIETARY AND CONFIDENTIAL
 THESE DRAWINGS AND SPECIFICATIONS ARE ORIGINAL
 PROPRIETARY AND CONFIDENTIAL MATERIALS OF CHAMPION
 COPYRIGHT © 1976-2008 BY CHAMPION



AVAILABLE ON:
 - 3/12 OR 5/12 ROOF PITCH
 - 8' CEILING HEIGHT
 - 96" WIDE BUMP OUT ONLY
 W/ 3661 WINDOWS ONLY.

vinyl siding
\$605⁰⁰

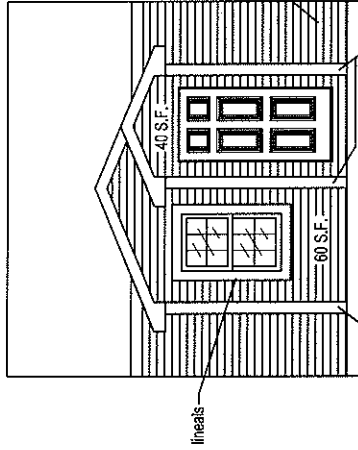
ELEVATION "M16"
 10' DORMER
 10" CANTILEVER



AVAILABLE ON:
 - ANY ROOF PITCH
 - 8' OR 9' CEILING HEIGHT
 - 96" WIDE BUMP OUT ONLY
 W/ 3661 WINDOWS ONLY.

vinyl siding
\$545⁰⁰

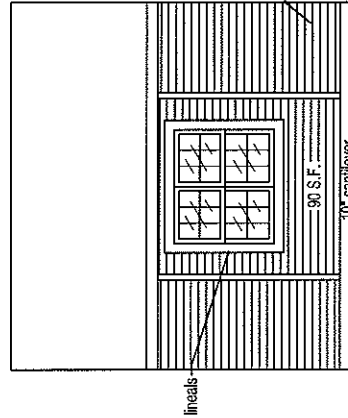
ELEVATION "M17"
 10' DROP EAVE DORMER
 10" CANTILEVER



AVAILABLE ON:
 - 3/12 OR 5/12 ROOF PITCH
 - 8' CEILING HEIGHT
 - WINDOWS/DOORS ARE NOT INCLUDED.
 - ACTUAL WINDOW/DOOR LAYOUT MAY DIFFER FROM WHAT IS SHOWN.

vinyl siding
\$695⁰⁰

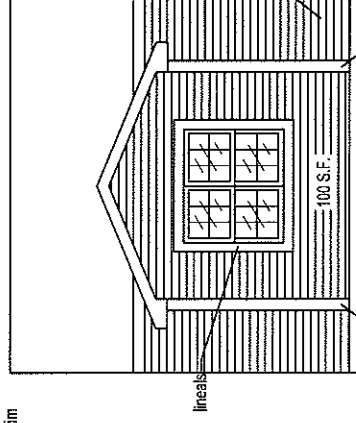
ELEVATION "M18"
 12' DROP EAVE DORMER
 10" FAUX BUMPOUT



AVAILABLE ON:
 - ANY ROOF PITCH
 - 8' OR 9' CEILING HEIGHT
 - 96" WIDE BUMP OUT ONLY
 W/ 3661 WINDOWS ONLY.

vinyl siding
\$495⁰⁰

ELEVATION "M19"
 10" CANTILEVER



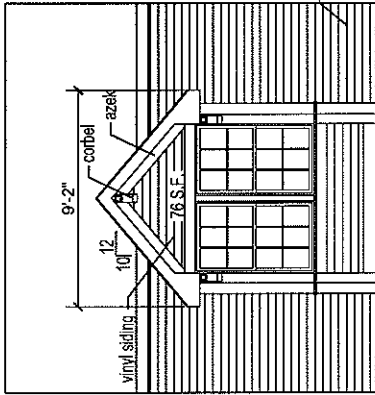
AVAILABLE ON:
 - 3/12 OR 5/12 ROOF PITCH
 - 8' CEILING HEIGHT
 - WINDOWS ARE NOT INCLUDED.
 - ACTUAL WINDOW/DOOR LAYOUT MAY DIFFER FROM WHAT IS SHOWN.

vinyl siding
\$570⁰⁰

ELEVATION "M20"
 12' DROP EAVE DORMER
 10" FAUX BUMPOUT

30 WIDE

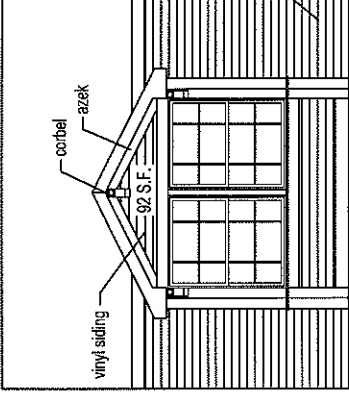
| | | | | | |
|-------------------------------------|--|--|--------------|-------------------------|----------------|
| APPROVER'S SEAL | | MODIFICATIONS | | MODEL: MOD ONLY DORMERS | SHEET: MD-03 |
| | | 1 ADDED 26"-8" ADD-ON BAY OPTION | 03-21-14 | | |
| | | 2 CLARIFIED BAYS | 04-17-14 | | |
| | | 3 REVISED ELEVATION "D" | JMD 10-13-15 | TITLE: 30 WIDE DORMERS | |
| | | 4 CLARIFIED DORMERS | JMD 01-12-16 | DRAWN BY: J.DRAKE | DATE: 04-29-11 |
| | | PROPRIETARY AND CONFIDENTIAL THESE DRAWINGS AND SPECIFICATIONS ARE ORIGINAL PROPRIETARY AND CONFIDENTIAL MATERIALS OF CHAMPION. COPYRIGHT © 1979-2008 BY CHAMPION | | | |
| | | SCALE: NTS REV. D | | | |
| 308 SHERIDAN DRIVE TOPEKA, IN 46571 | | | | | |



AVAILABLE ON:
 - ANY ROOF PITCH
 - 8" OR 9" CEILING HEIGHT
 - 36" WIDE WINDOWS ONLY
 - WINDOWS/DOORS ARE NOT INCLUDED.

vinyl siding
 \$815⁰⁰

9' DORMER "M21"
 9' DROP EAVE DORMER
 7' FAUX BUMPOUT
 AZEK TRIM/CORBELS

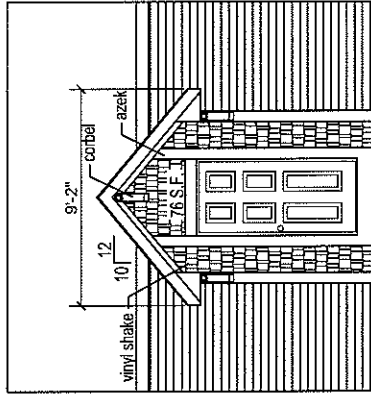


AVAILABLE ON:
 - ANY ROOF PITCH
 - 8" OR 9" CEILING HEIGHT
 - 46" WIDE WINDOWS ONLY
 - WINDOWS/DOORS ARE INCLUDED.

vinyl siding

\$910⁰⁰

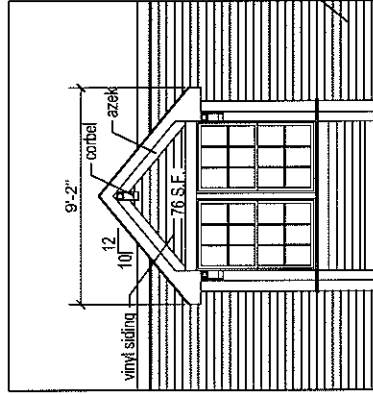
ELEVATION "M22"
 10' DROP EAVE DORMER
 9'6" FAUX BUMPOUT
 AZEK TRIM/CORBELS



AVAILABLE ON:
 - ANY ROOF PITCH
 - 9" CEILING HEIGHT
 - WINDOWS/DOORS ARE NOT INCLUDED.

\$695⁰⁰

9' DORMER "M23"
 9' DROP EAVE DORMER
 7' FAUX BUMPOUT
 AZEK TRIM/SHAKE CORBELS

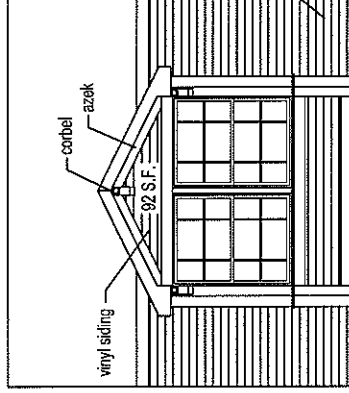


AVAILABLE ON:
 - ANY ROOF PITCH
 - 8" OR 9" CEILING HEIGHT
 - 36" WIDE WINDOWS ONLY
 - WINDOWS/DOORS ARE NOT INCLUDED.

vinyl siding

\$1,050⁰⁰

9' DORMER "M24"
 9' DROP EAVE DORMER
 7'X6" BUMPOUT
 AZEK TRIM/CORBELS



AVAILABLE ON:
 - ANY ROOF PITCH
 - 8" OR 9" CEILING HEIGHT
 - 46" WIDE WINDOWS ONLY
 - WINDOWS/DOORS ARE INCLUDED.

vinyl siding

\$1,095⁰⁰

ELEVATION "M25"
 10' DROP EAVE DORMER
 9'6"X6" BUMPOUT
 AZEK TRIM/CORBELS

APPROVER'S SEAL

MODIFICATIONS

| | | |
|---|--------------------------------|--------------|
| 1 | ADDED 26'-8" ADD-ON BAY OPTION | 03-21-14 |
| 2 | CLARIFIED BAYS | 04-17-14 |
| 3 | REVISED ELEVATION "D" | JMD 10-13-15 |
| 4 | CLARIFIED DORMERS | JMD 01-12-16 |

PROPRIETARY AND CONFIDENTIAL
 THESE DRAWINGS AND SPECIFICATIONS ARE ORIGINAL
 PROPRIETARY AND CONFIDENTIAL MATERIALS OF CHAMPION
 COPYRIGHT © 1976-2008 BY CHAMPION

SHEET:

MODEL: MOD ONLY DORMERS

MD-04

TITLE:

DATE: 04-29-11

SCALE: NTS

REV. D



308 SHERIDAN DRIVE TOPEKA, IN. 46571

