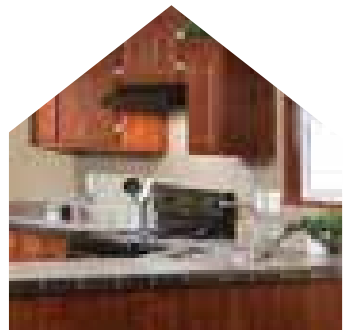
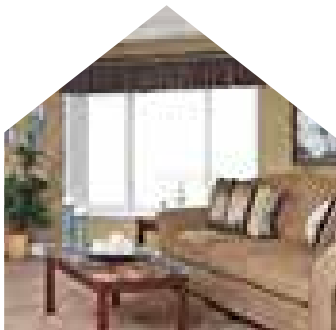




ADVANTAGE HOME SERIES

REDMAN  HOMES.®



ABOUT US

Redman Homes is one of the oldest and most respected homebuilders in America. Founded in 1937, Redman pioneered factory home construction and continues to lead advances in quality control, design and home value today. Through experience and innovation we've harnessed production line efficiency and, paired with our high-quality craftsmanship, created a process that delivers homes that meet our superior standards.

A place to call your own

Beyond just building you a house, we're committed to providing you and your family with a home to make memories in that will last a lifetime. Somewhere you can feel secure. A place you can call your own. A home that fits your lifestyle and has your own personal touch. Whether you're an active young family constantly on the go or empty nesters ready to simplify, just relax – we have a home that's right for you.

More choice, more freedom

Our vast selection of floor plans, color choices and options give you the freedom to express your personal style and fit your home around your life. Using our online Kitchen Designer, it's easy to create the kitchen of your dreams.

Building the best

We build each and every home to meet or exceed a strict national or state building code, and we set even higher standards for

ourselves. Focusing on the things you don't see as well as the things you do, we monitor and inspect our homes at every stage of construction. From the plumbing system to the electrical wiring, from the kitchen cabinets to the closets in the bedrooms – every home we build undergoes rigorous quality inspections to ensure we're providing you with nothing but our best.

The quality you expect

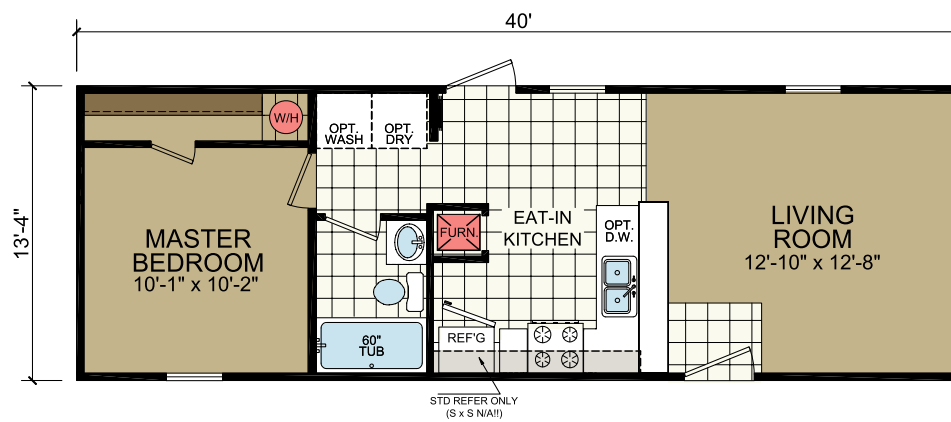
To build the best, we use the best. To meet your expectations of quality - and ours - we use only the highest-quality building materials and trusted national brand names. From insulation and fixtures to flooring and appliances, we only buy components from suppliers who share our commitment to quality. By using the best, we're confident we can build you a home with the lasting value you'll appreciate for years to come. Your housing consultant can tell you more about the specific brands used in our homes.

1444-201

14' x 40'
1 bed-1 bath
533 sq. ft.



Shown with Site-built Porch

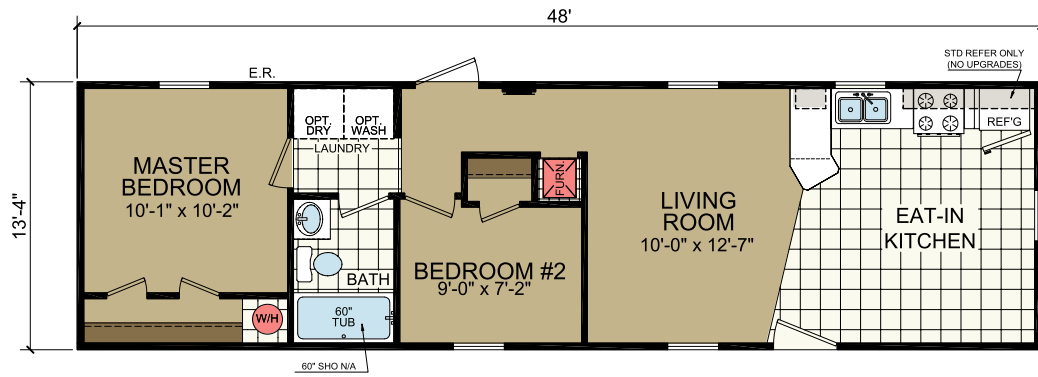


1452-201

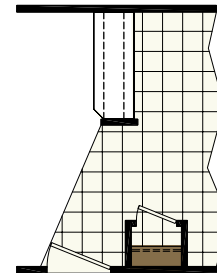
14' x 48'
2 bed-1 bath
640 sq. ft.



Shown with Site-built Porch



OPTIONAL BAR



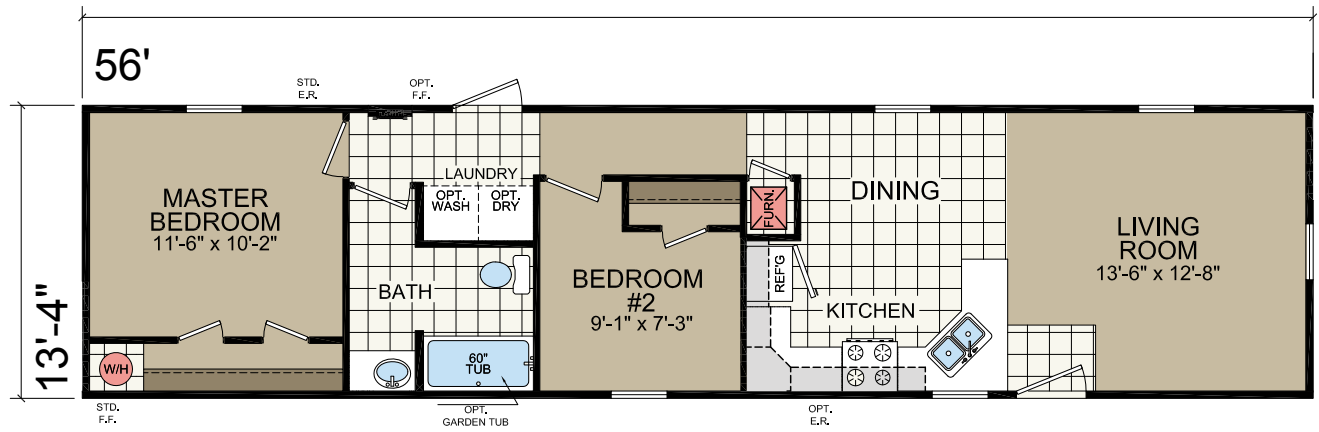
OPT CLOSET
OR PANTRY

1460-203

14' x 56'
2 bed-1 bath
747sq. ft.



Shown with Site-built Porch

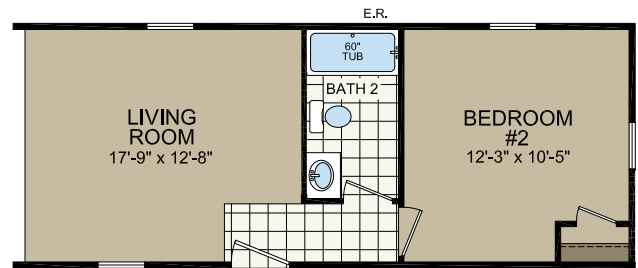
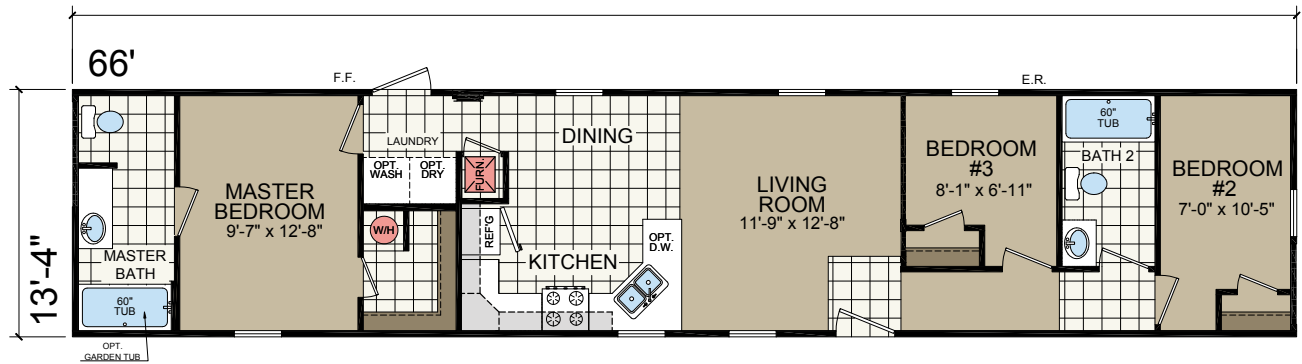


1470-205

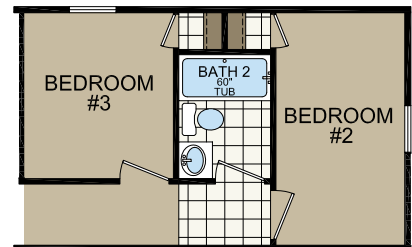
14' x 66'
3 bed-2 bath
880 sq. ft.



Shown with Site-built Porch



2 BEDROOM OPTION



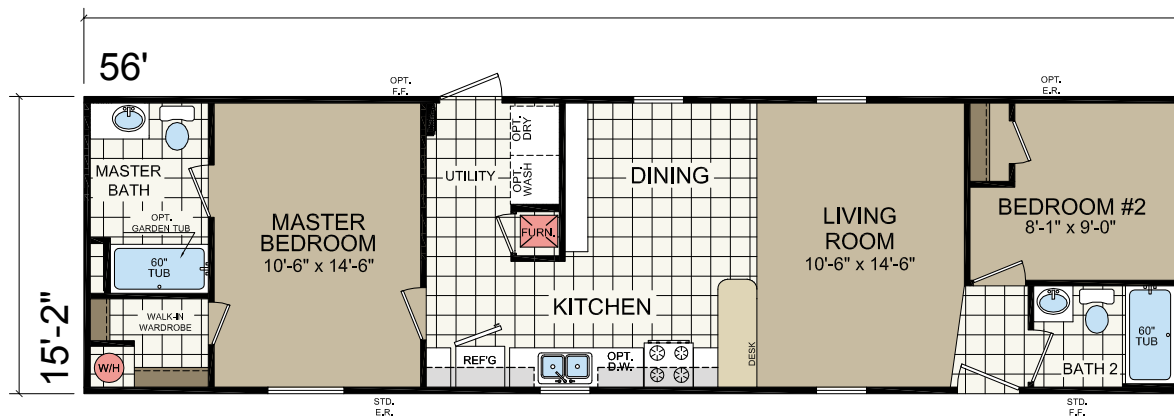
BATH 2 OPTION
(COMMUNITY ORDERS ONLY)

1660-205

16' x 56'
2 bed-2 bath
849 sq. ft.



Shown with Optional Master Bedroom Windows
Shown with Site-built Porch

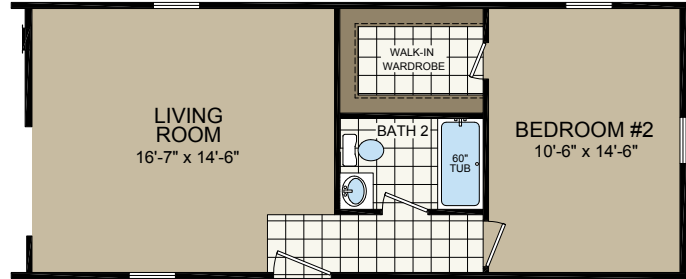


1672-201

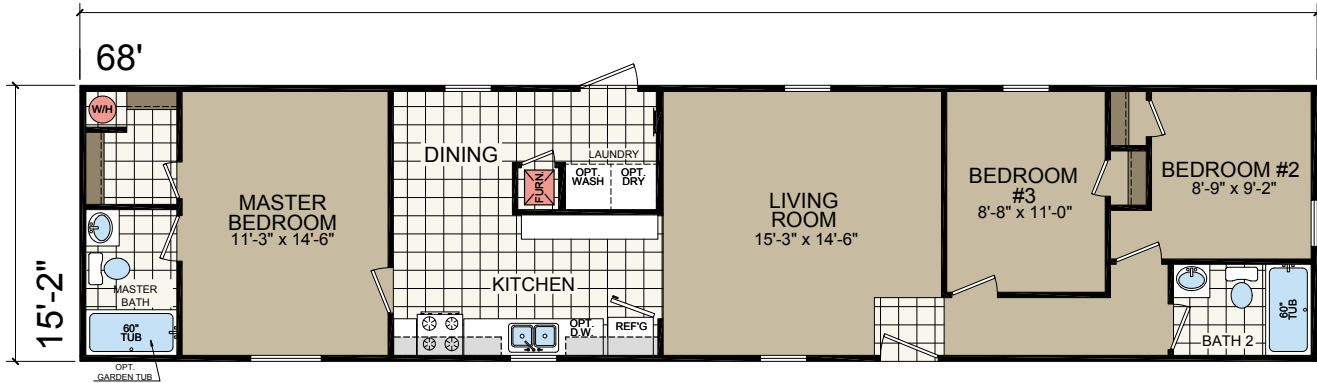
16' x 68'
3 bed-2 bath
849 sq. ft.



Shown with Optional Master Bedroom Windows
Shown with Site-built Porch



2 BEDROOM OPTION

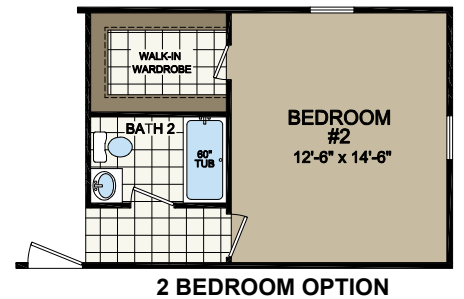
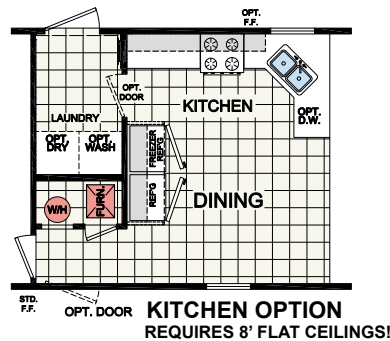
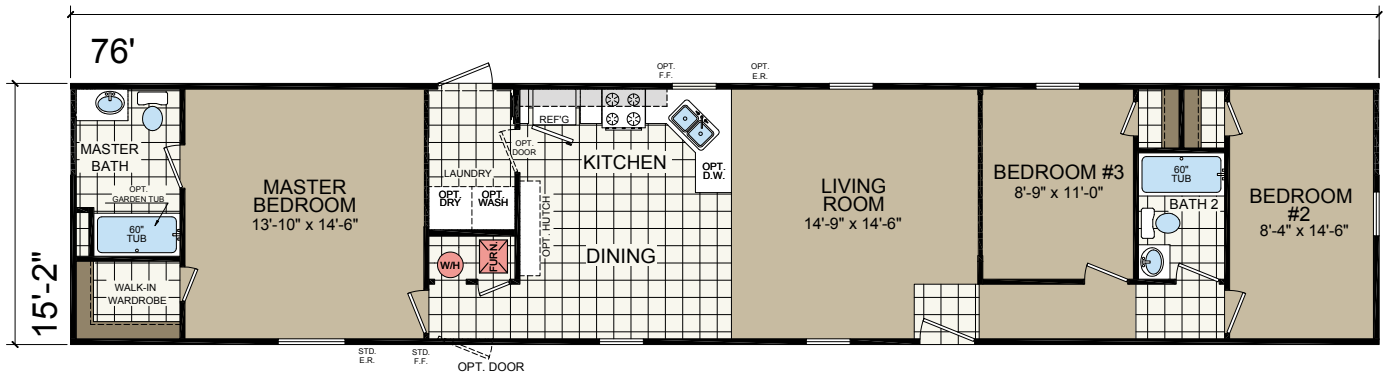


1680-203

16' x 76'
3 bed-2 bath
1153 sq. ft.



Shown with Optional Master Bedroom Windows
Shown with Site-built Porch

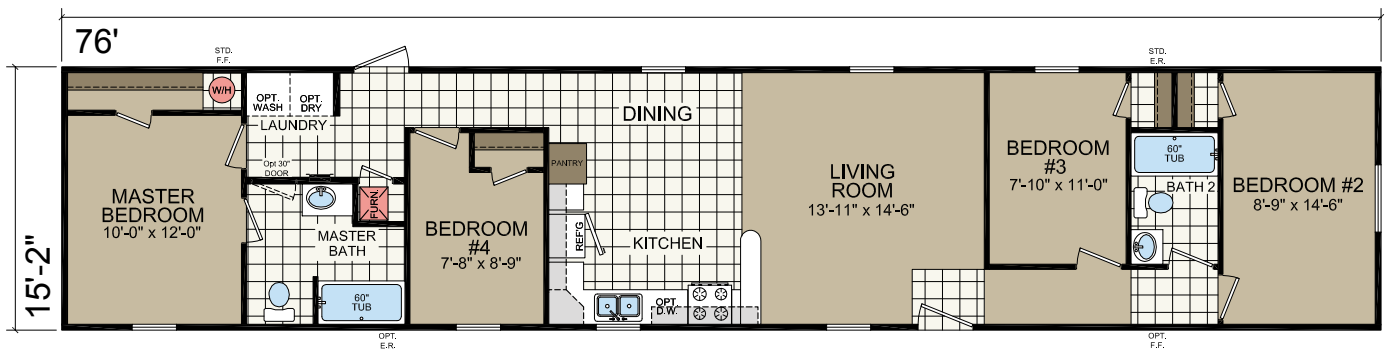


1680-205

16' x 76'
4 bed-2 bath
1153 sq. ft.



Shown with Optional Windows in Bedroom #2
Shown with Site-built Porch



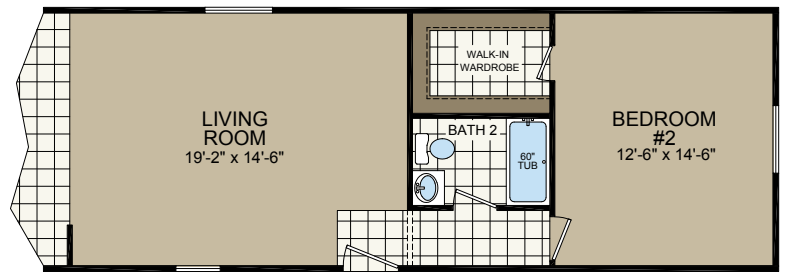
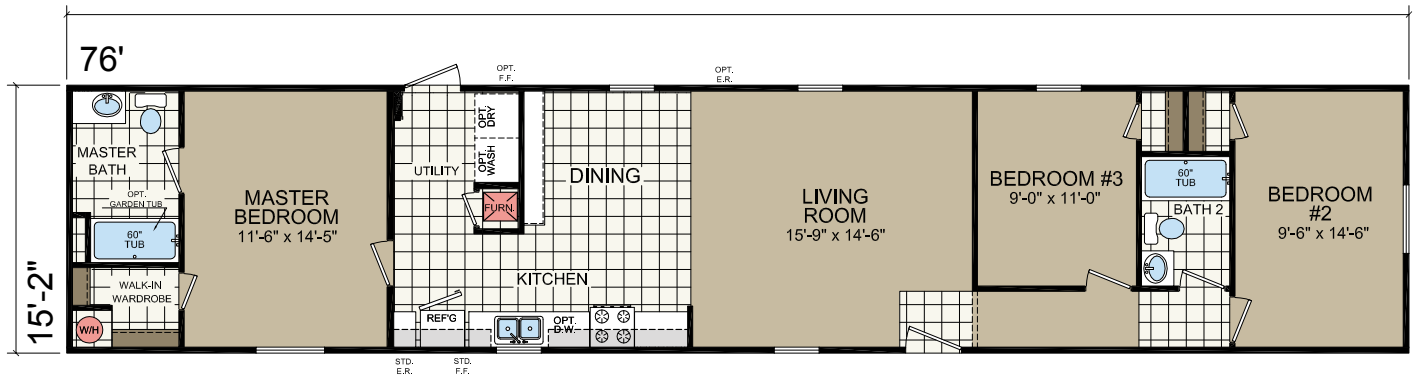
OPTIONAL PASS-THRU

1680-215

16' x 76'
3 bed-2 bath
1153 sq. ft.



Shown with Optional Windows in Master Bedroom & Bedroom #2
Shown with Site-built Porch



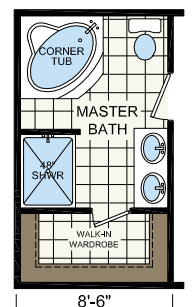
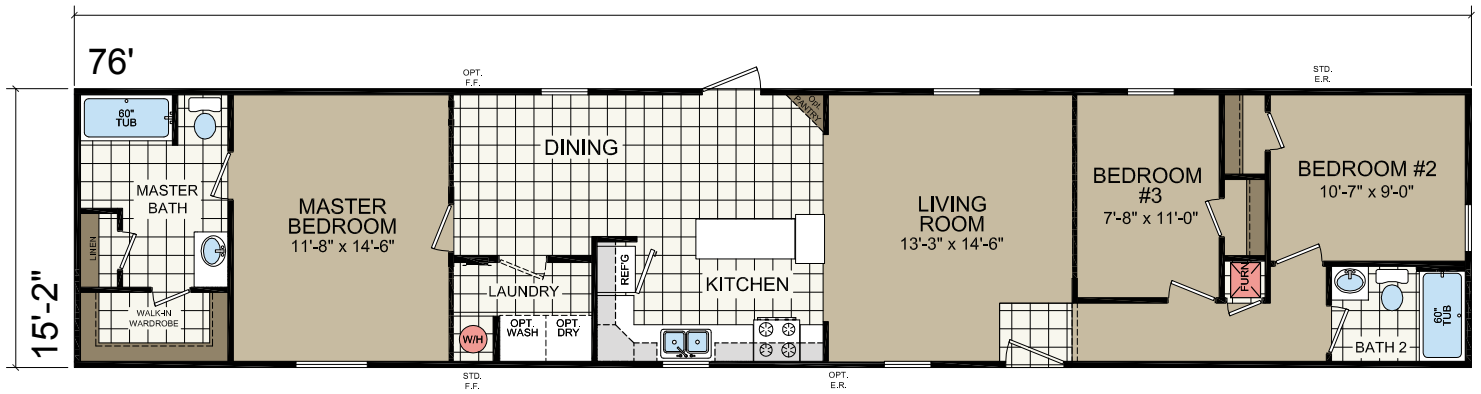
2 BEDROOM OPTION

1680-225

16' x 76'
3 bed-2 bath
1153 sq. ft.



Shown with Optional Master Bedroom Windows
Shown with Site-built Porch



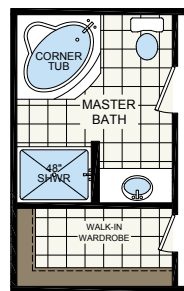
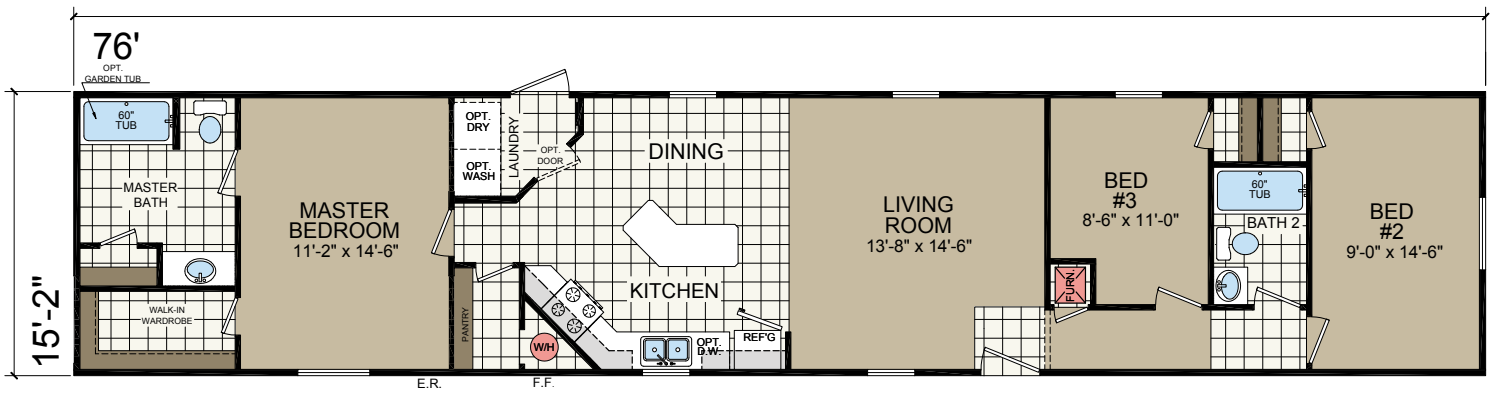
OPT. MASTER BATH

1680-229

16' x 76'
3 bed-2 bath
1153 sq. ft.



Shown with Optional Windows in Master Bedroom and Bedroom #2
Shown with Site-built Porch



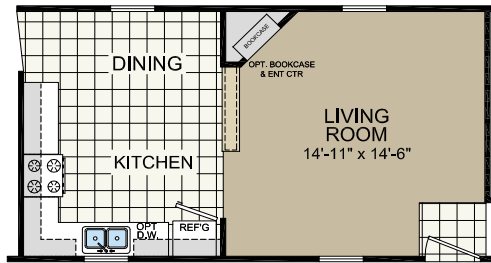
OPT. MASTER BATH

1680-233

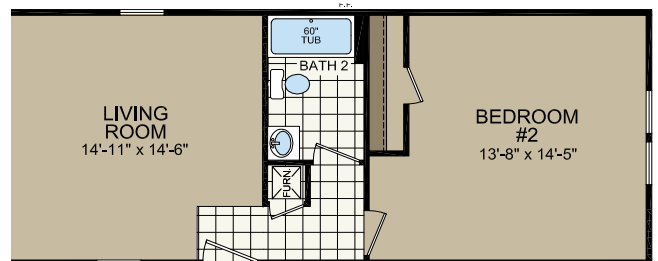
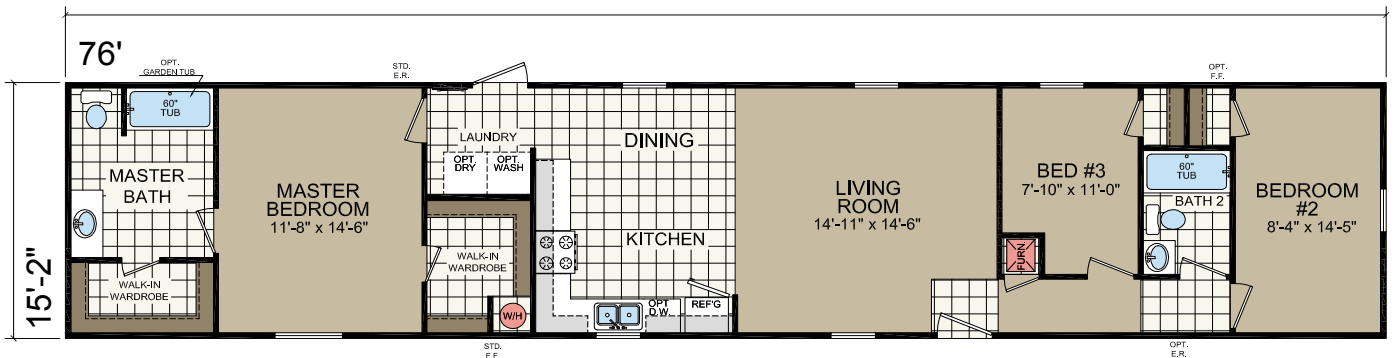
46' x 76'
3 bed - 2 bath
1153 sq. ft.



Shown with optional window at MBR and porch built on site by others



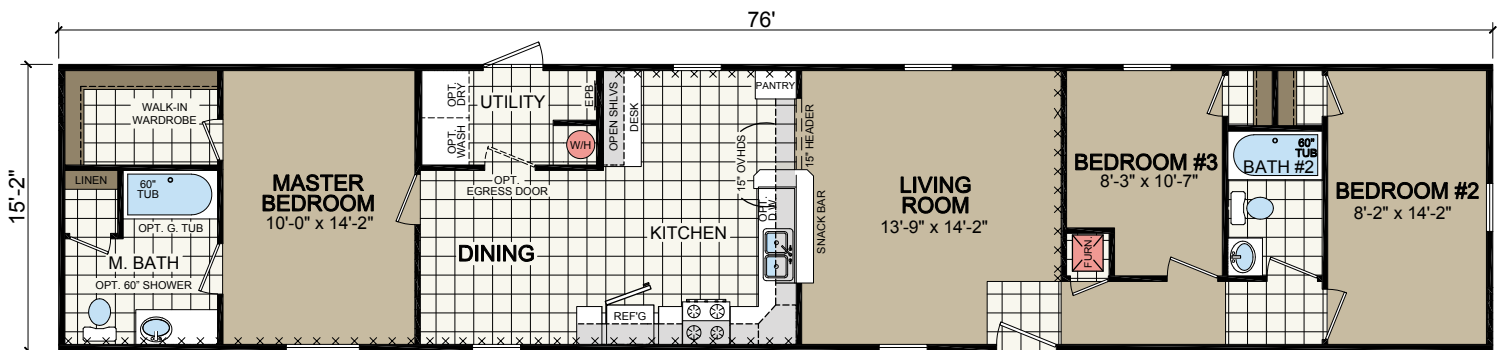
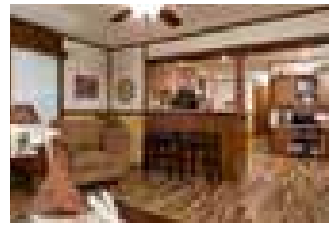
OPTIONAL ENTERTAINMENT CENTER



OPTIONAL 2 BEDROOM

1680-243

16' x 76'
3 bed-2 bath
1153 sq. ft.

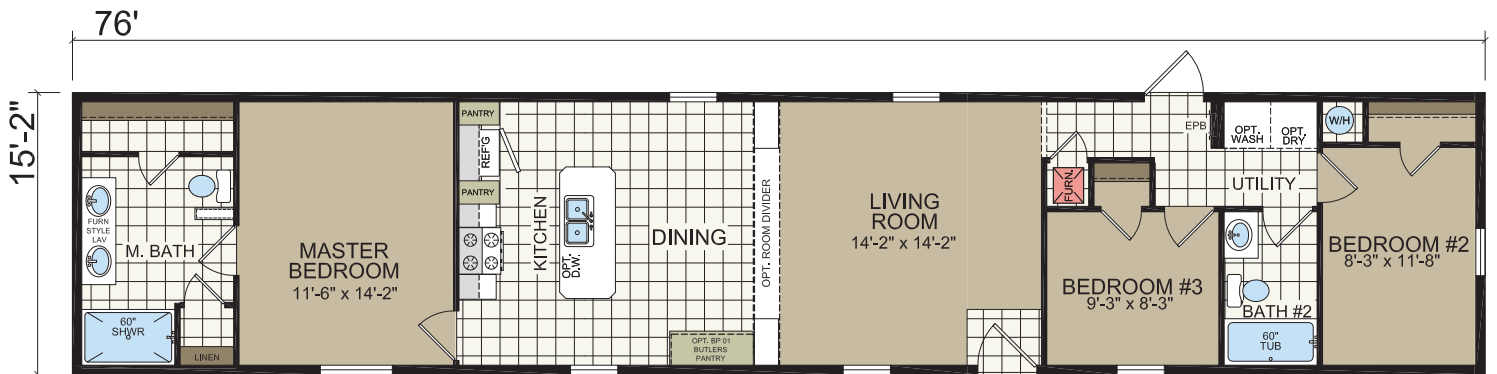


1680-261

16' x 76'
3 bed - 2 bath
1153 sq. ft.



Shown with optional end elevation and porch built on site by others



2015 ADVANTAGE SINGLES II

STANDARD FEATURES

STRUCTURAL

Recessed Frame
Detachable Hitch
48" OC Outriggers
2 x 4 Exterior Sidewalls – 16" OC
2 x 6 Floor Joist – 16" OC (14')
2 x 8 Floor Joist – 16" OC (16')
R-11 Sidewall Insulation
R-11 Floor Insulation w/Additional R-11
Outside I-Beams
R-33 Roof Insulation – 14'
R-28 Roof Insulation – 16'
5/8" OSB Decking T & G
7/16" OSB Roof Sheathing
30lb PSF Roof Load

INTERIOR FINISH

8' Flat Ceilings
Main Panel T/O – Scout Canvas
*Accent Panels – Choice of Barnwood /
Ocean / Truffle*
Live Wire Carpet
Tack Strip
5-lb Rebond Carpet Pad
Linoleum – Factory Designers Choice
Wire Shelving in Closets
Smoke Alarms w/Battery Backup
1-3/4" Door Casing
1-3/4" Ceiling Cove
MDF Door Jambs
Window Jambs
Formica Countertops
Self Edge Countertops
6" ORB Light Fixtures – VBP
*1-3/4" Wrapped (618) Hometown Ash
Window & Door Casing*
Window & Door Jamb Wrapped MDF

ORB = Oil Rubbed Bronze

EXTERIOR

8' Sidewalls
Nominal 3/12 Roof Pitch
25 Year Shingles
Storm Board Sheathing
Double 4" Vinyl Siding
White Aluminum Fascia
White Vented Soffit
Raised Panel Shutters – FDS / Hitch End
Black-Wine-Green only
Exterior Light – Front Door
Exterior Light – Rear Door

KITCHEN / BATHROOMS

Standard Electric Range
30" Range Hood
18" CF Over/Under Refrigerator
30" O/H Cabinets w/Cove
Fixed Shelf in Overhead Cabs
Corner Overhead Cabinet (VBP)
*Wrapped Flat Panel Cabinet Doors
Hometown Ash*
Wrapped Cabinet Stiles
Single Bank of Drawers – VBP
Shelf Over Refrigerator
Lauan Side Panels
2 Handle w/Sprayer @ Kitchen
7" Stainless Steel Kitchen Sink
Fiberglass Tub/Shower (VBP)
Round Commode
Single Handle Nickel Tub/Shower
Faucets
2 Handle Nickel Lav Faucets
Lighted Bath Fan
Cabinet Knobs Throughout
China Lav Bowls @ Baths
*Pivot Shower Door for 60" or 48"
Showers – VBP*

WINDOWS & DOORS

6 Panel Front Door w/Storm
Blank Fiberglass Rear Door
Low E Single Hung Vinyl 6/6 Gridded
Windows (sized VBP)
2" Mini Blinds Throughout
6 Panel White Interior Doors
ORB Round Knobs
ORB = Oil Rubbed Bronze
Wood Furnace Door
Valances at Living Areas

HEATING / PLUMBING / ELECTRICAL

Electric Furnace
Aluminum Heat Ducts
In-Line Floor Registers
100 AMP Service
(1) Exterior Recept
All Copper Wiring
Plumb for Washer
Wire for Electric Dryer
Washer/Dryer Shelf
PEX Water Lines
30 Gallon Electric Water Heater
*1 Exterior Frost-Free Faucet
Main Water Shut Off*

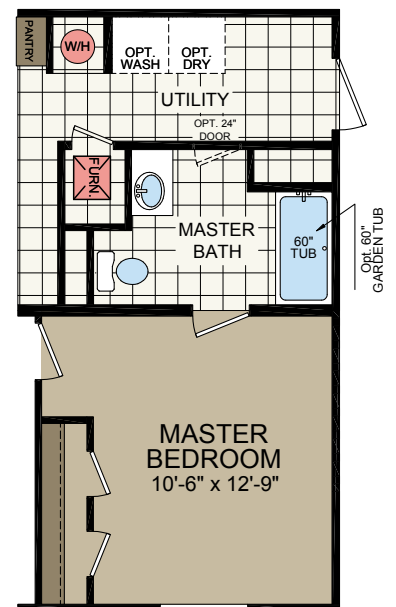
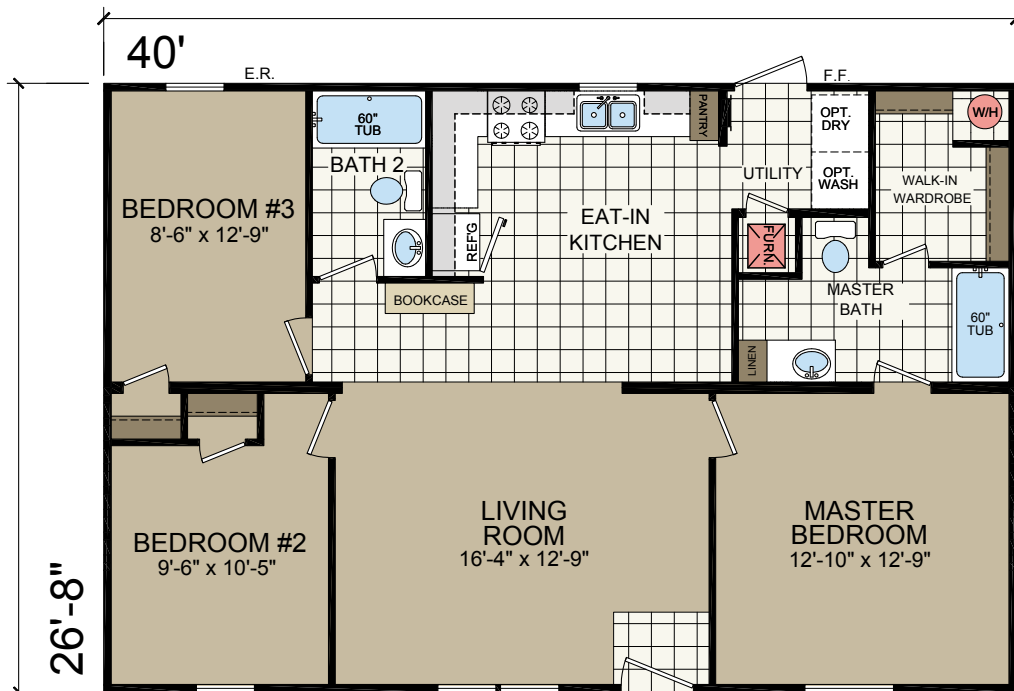
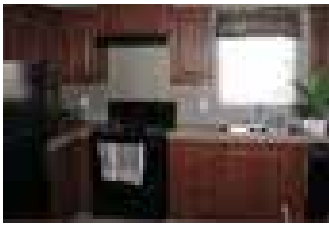
Due to continuous product development and improvement, prices, specifications and material are subject to change without notice or obligation. Square footage and other dimensions are approximate. Included images are artist renderings and are not intended to be an accurate representation of the homes. Renderings and Floor Plans may be shown with optional features and / or third party additions that may not be available in all regions or situations. Exterior Renderings may include onsite builder built options not offered by Champion Home Builders, Inc.

2844-201

28' x 40'
3 bed-2 bath
1067 sq. ft.



Shown with Optional Master Bedroom Windows
Shown with Site-built Porch

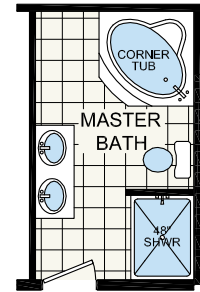
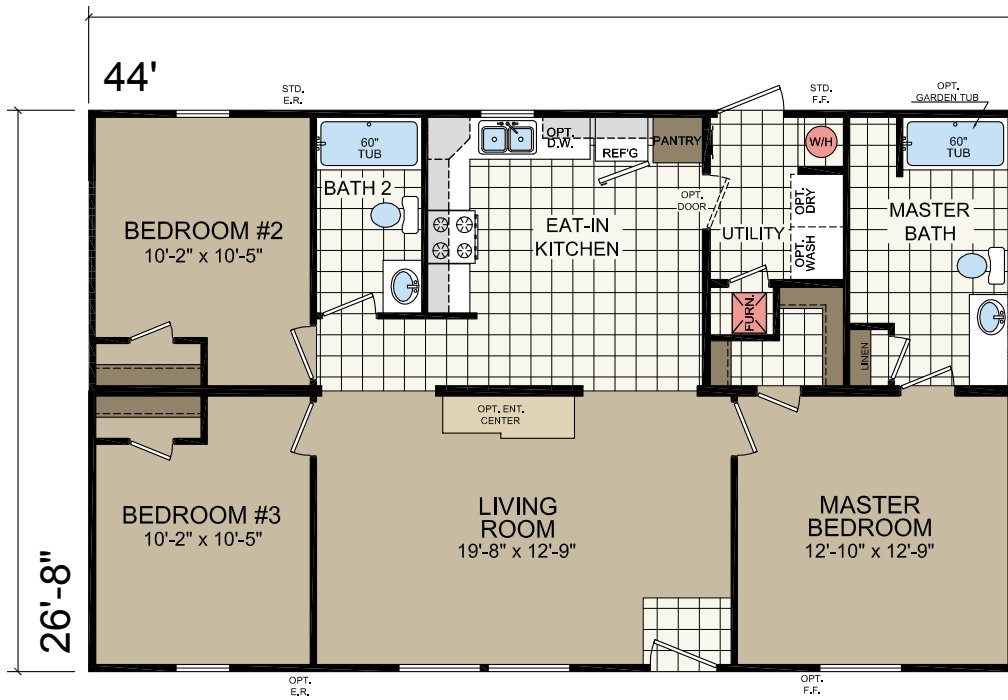


2848-201

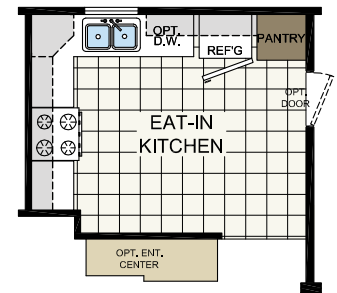
28' x 44'
3 bed-2 bath
1173 sq. ft.



Shown with Optional Windows in Living Room and Master Bedroom
Shown with Site-built Porch



OPTIONAL MASTER BATH



OPTIONAL KITCHEN

2852-207

28' x 48'
3 bed-2 bath
1280 sq. ft.



Shown with Site-built Porch

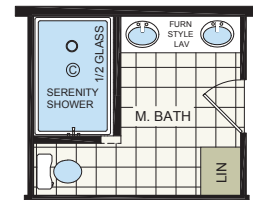
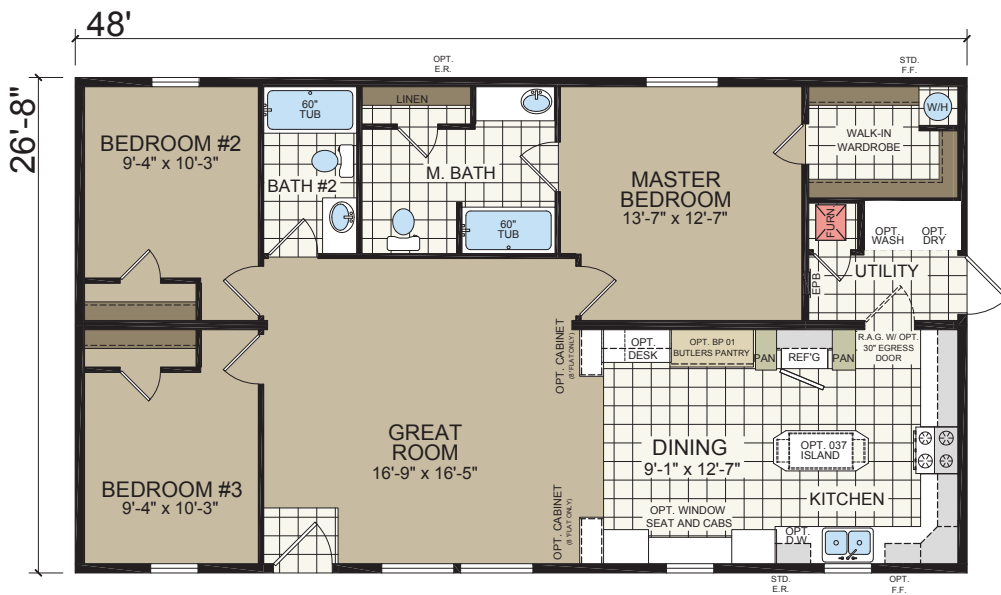


2852-215

28' x 48'
3 bed - 2 bath
1280 sq. ft.



Shown with Optional Elevation



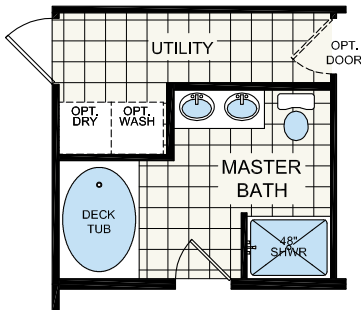
OPT. SERENITY SHOWER

2856-201

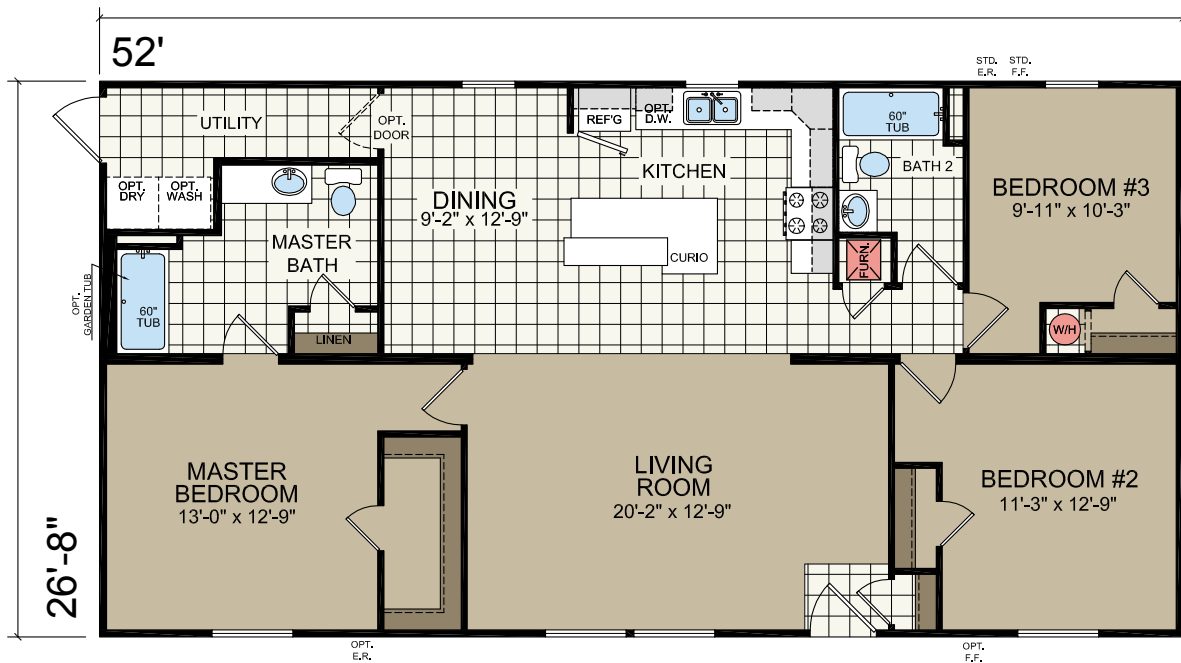
28' x 52'
3 bed-2 bath
1387 sq. ft.



Shown with Optional Windows in Living Room, Master Bedroom and Bedroom #2
Shown with Site-built Garage and Porch



OPTIONAL MASTER BATH

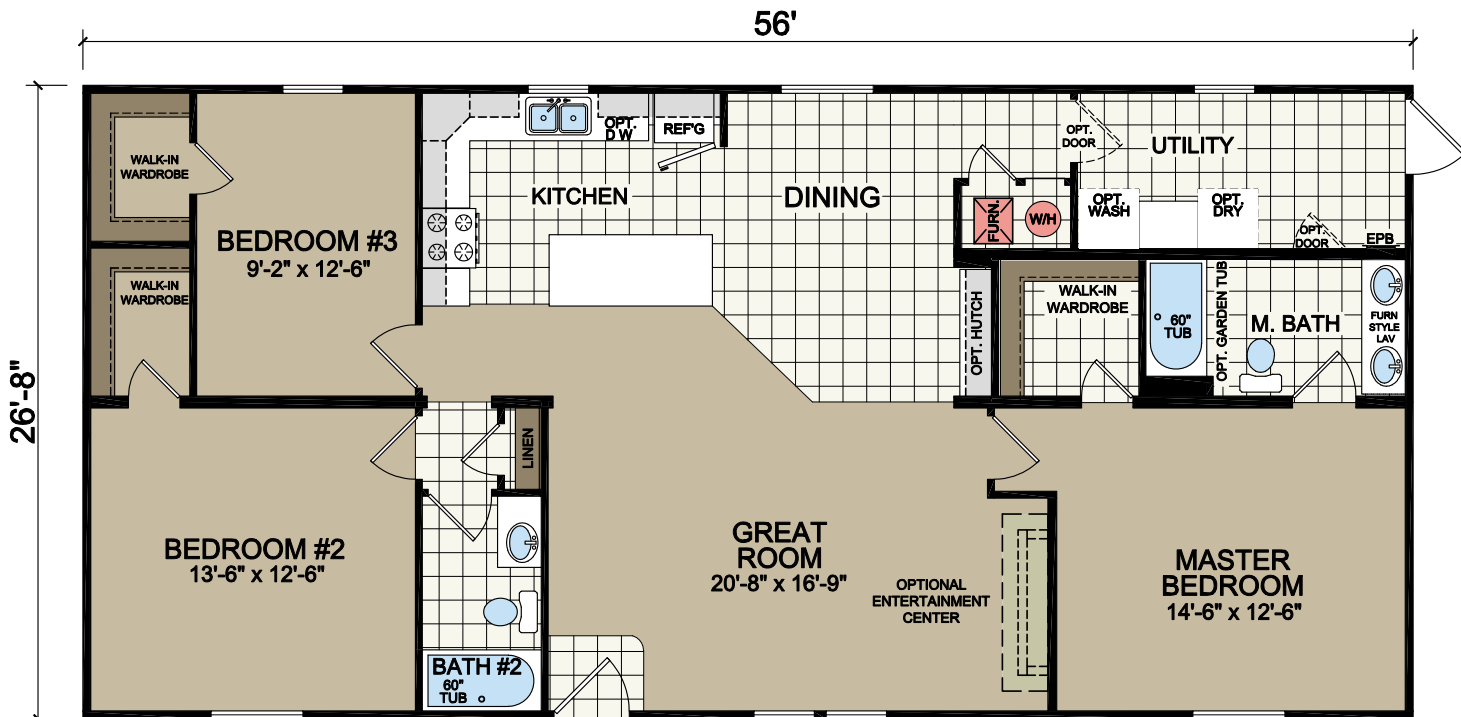


2860-223

28' x 56'
3 bed-2 bath
1493 sq. ft.



Shown with Optional Elevation and Optional Exterior

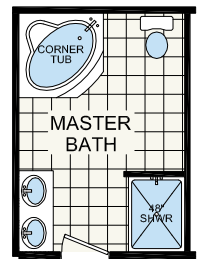
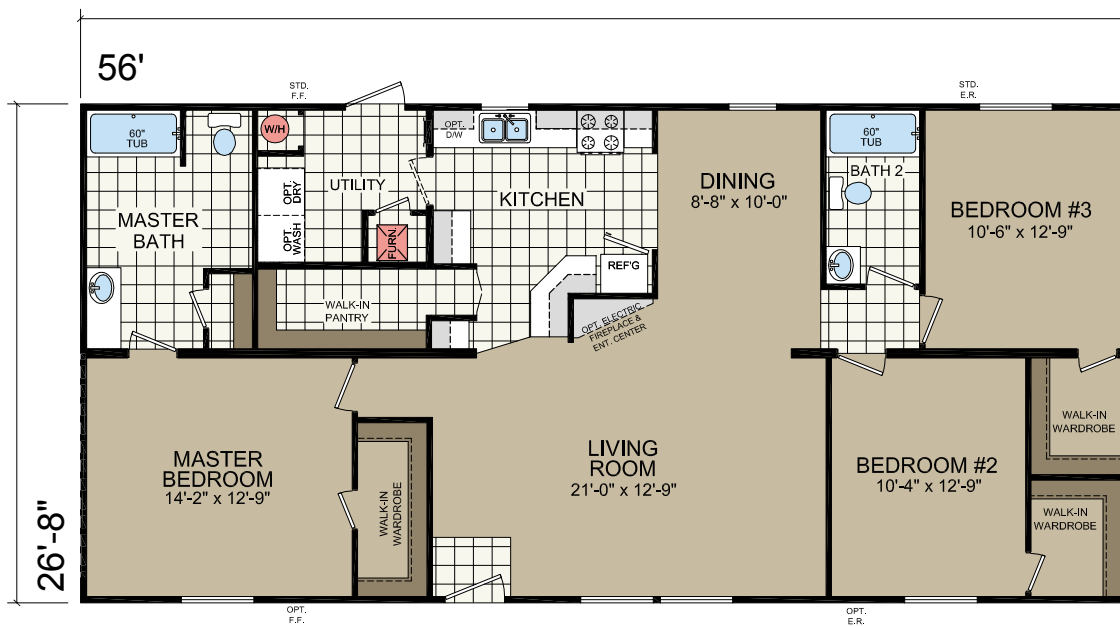


2860-205

28' x 56'
3 bed-2 bath
1493 sq. ft.



Shown with Optional Windows in Living Room, Master Bedroom and Bedroom #2
Shown with Site-built Porch



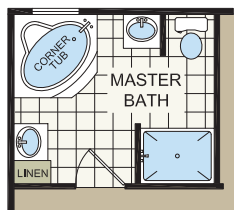
OPT. MASTER BATH

2860-231

28' x 56'
3 bed - 2 bath
1493 sq. ft.



Shown with optional elevation and garage built on site by others



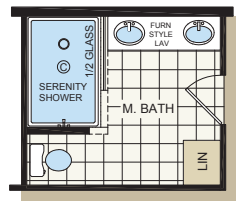
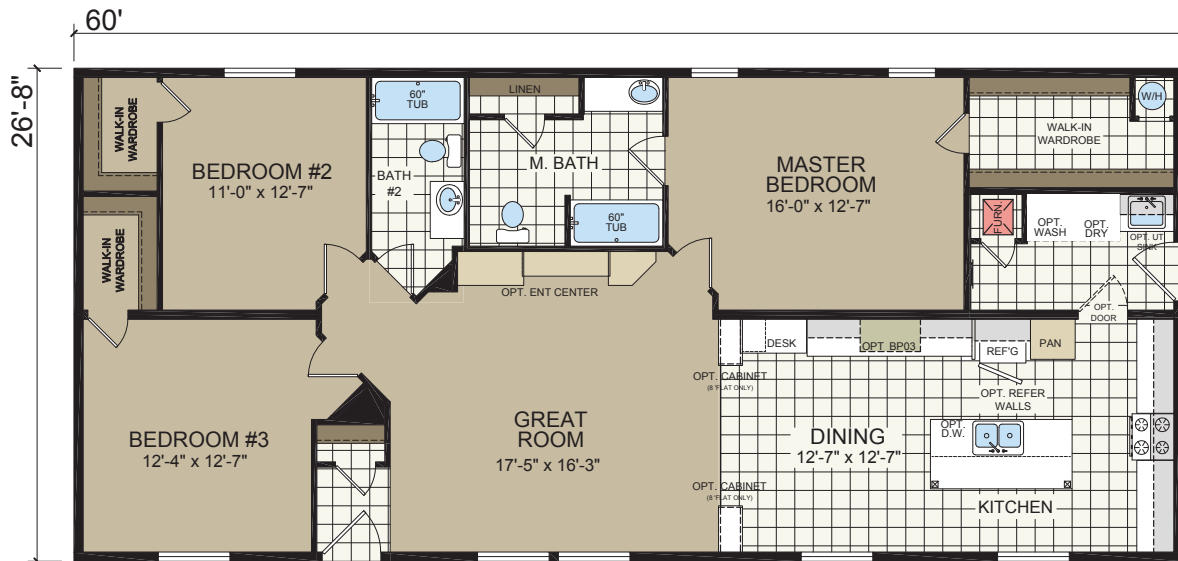
Opt. MASTER BATH

2864-217

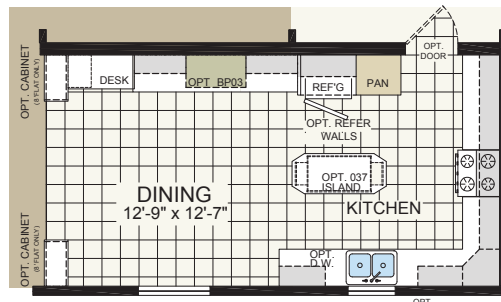
28' x 60'
3 bed - 2 bath
1600 sq. ft.



Shown with Optional Elevation and Exterior



OPT. SERENITY SHOWER



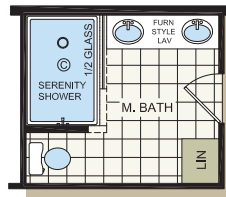
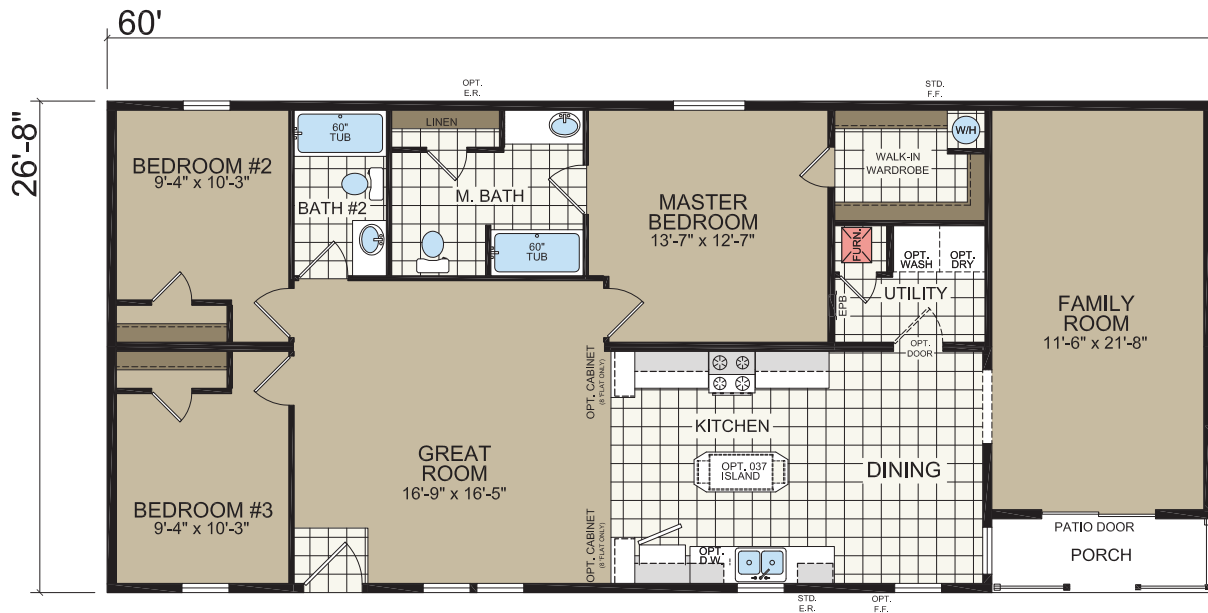
OPTIONAL KITCHEN #1

2864-219

28' x 60'
3 bed - 2 bath
1600 sq. ft.



Shown with Porch at front Door built on site by others



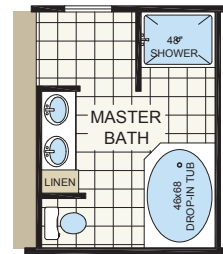
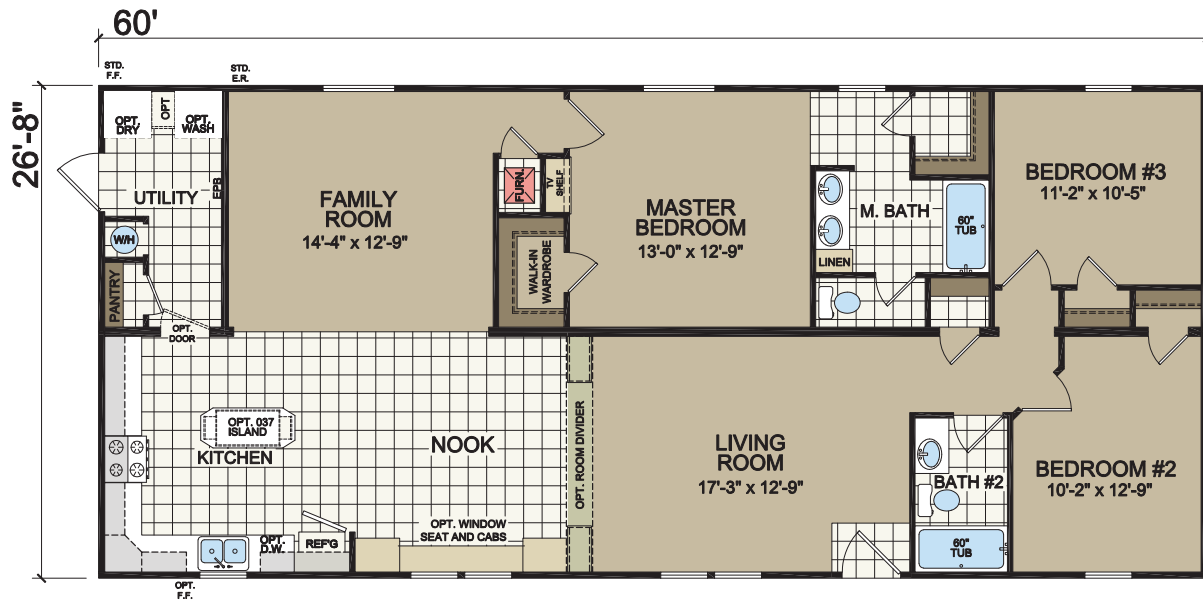
OPT. SERENITY SHOWER

2864-221

28' x 60'
3 bed - 2 bath
1600 sq. ft.



Shown with porch and garage built on site by others



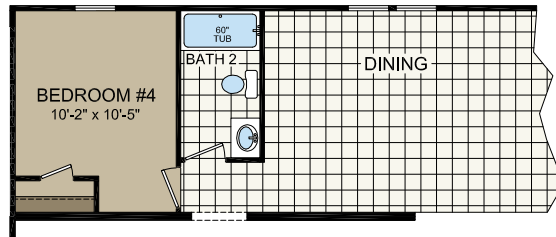
OPT. MASTER BATH

2864-203

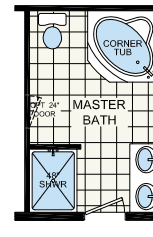
28' x 60'
3 bed-2 bath
1600 sq. ft.



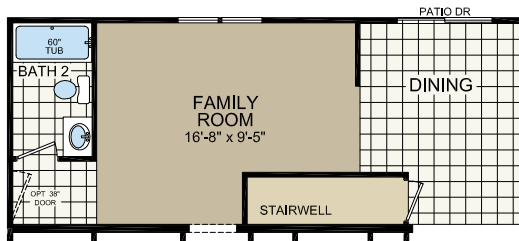
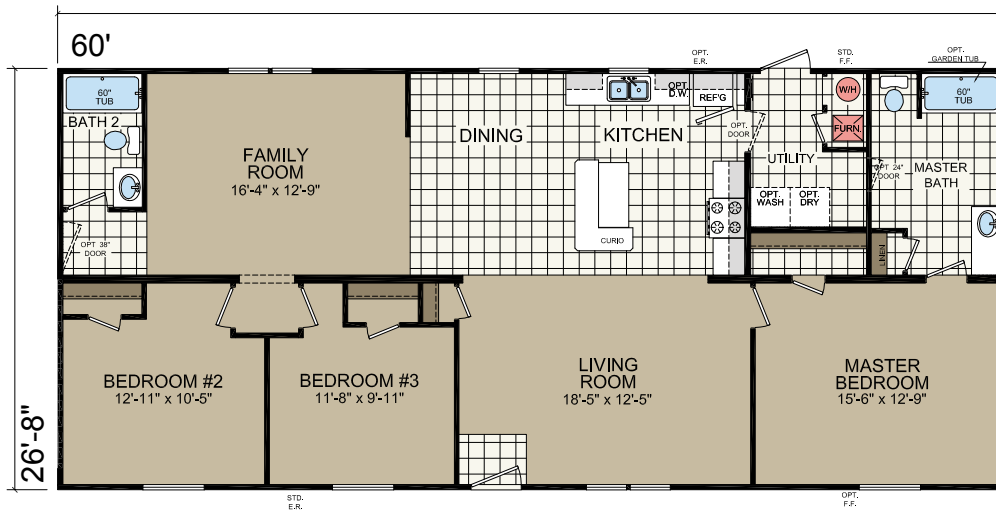
Shown with *Optional Bedroom Windows*
Shown with *Site-built Porch*



OPTIONAL 4th BEDROOM



OPTIONAL MASTER BATH

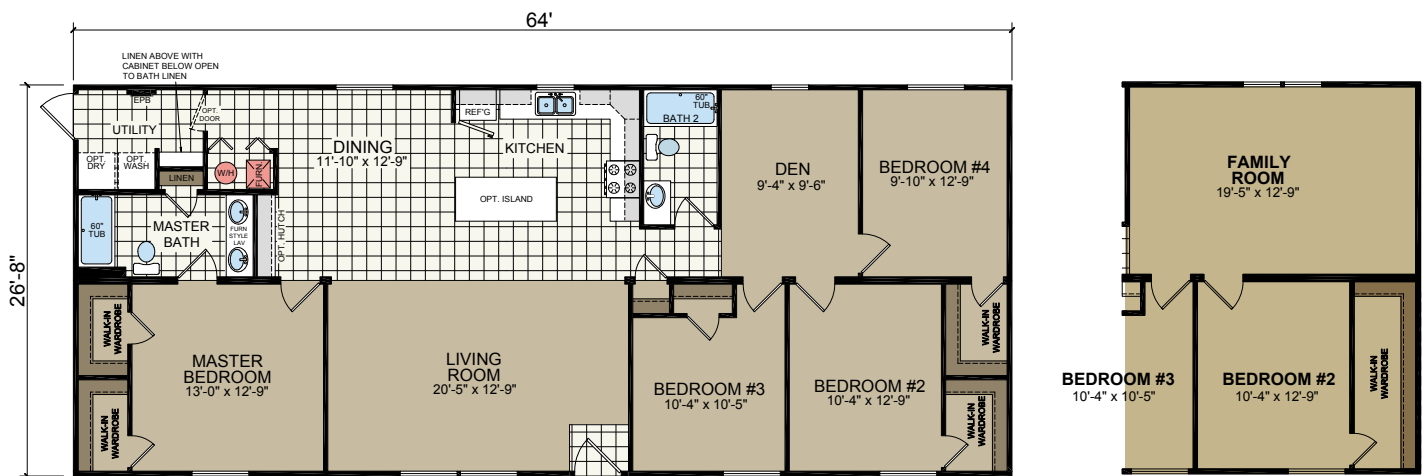
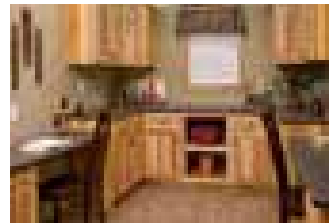
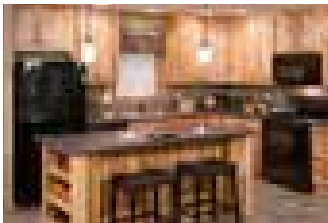


2868-203

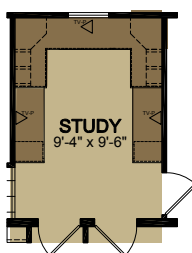
28' x 64'
4 bed-2 bath
1707 sq. ft.



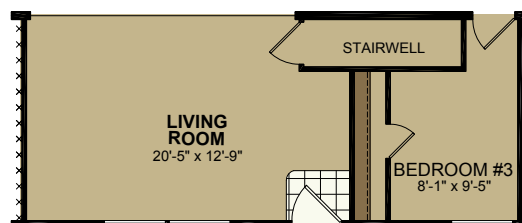
Shown with Optional Exterior and Porch Built On-site by Others



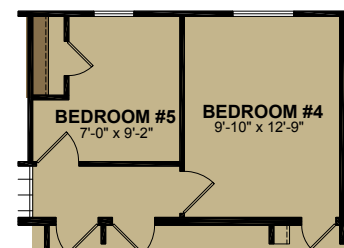
FAMILY ROOM OPTION



STUDY OPTION



STAIRWELL OPTION



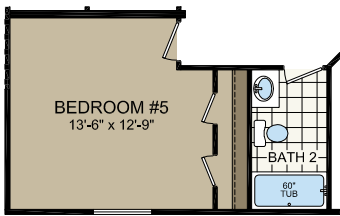
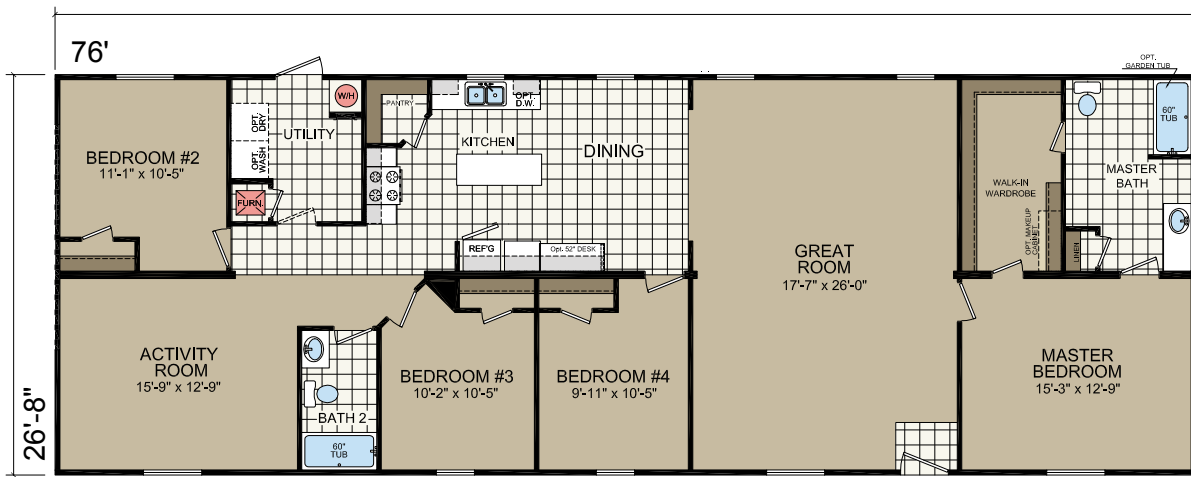
5TH BEDROOM OPTION

2880-201

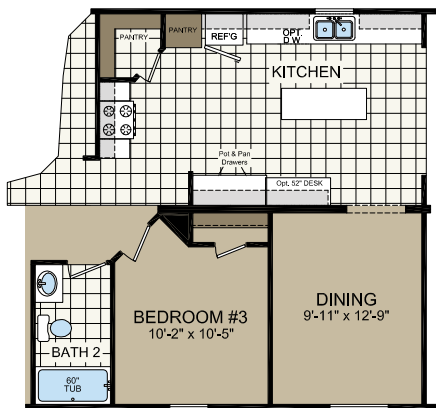
28' x 76'
4 bed-2 bath
2027 sq. ft.



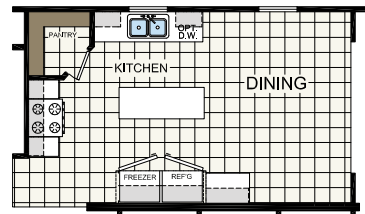
Shown with Site-built Porch



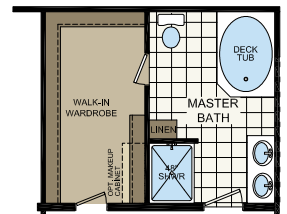
5th BEDROOM OPTION



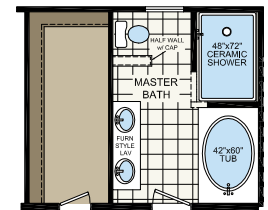
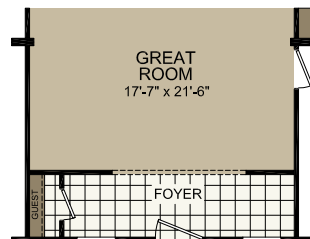
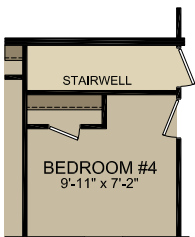
OPTION KITCHEN w/ FORMAL DINING ipo 4TH BEDROOM



KITCHEN w/DBL REFER OPTION



OPTIONAL MASTERBATH



OPTION SERENITY BATHROOM

2015 ADVANTAGE

SECTIONAL II

STANDARD FEATURES

STRUCTURAL

Recessed Frame
Detachable Hitch
48" OC Outriggers
2 x 4 Exterior Sidewalls – 16" OC
(28') 2 x 6 Floor Joist – 16" OC
(32') 2 x 8 Floor Joist – 16" OC
R-11 Sidewall Insulation
R-11 Floor Insulation w/Additional
R-11 Outside I-Beams
R-28 Roof Insulation
5/8" OSB Decking T & G
7/16" OSB Roof Sheathing
30-lb PSF Roof Load

INTERIOR FINISH

Cathedral Ceilings
Main Panel T/O – Scout Canvas
Accent Panels – Choice of Barnwood /
Ocean / Truffle
Live Wire Carpet
Tack Strip
5-lb Rebond Carpet Pad
Linoleum – Factory Designer Choice
Wire Shelving in Closets
Smoke Alarms w/Battery Backup
1-3/4" Ceiling Cove Flat Hometown Ash
Formica Countertops
Self-Edge Countertops
6" ORB Light Fixtures
1-3/4" Wrapped (618) Hometown Ash
Window & Door Casing
Window & Door Jamb Wrapped MDF

EXTERIOR

7-1/2' Sidewalls
Nominal 3/12 Roof Pitch
25-Year Shingles
Storm Board Sheathing
Dutch Lap 4" Vinyl Siding
White Vented Soffit
Raised Panel Shutters – Front Door Side
Exterior Light – Front Door
Exterior Light – Rear Door

KITCHEN / BATHROOMS

Standard Electric Range
30" Range Hood
17" CF Over/Under Refrigerator
30" O/H Cabinets w/Fixed Shelf
*Hometown Ash Wrapped Flat Panel
Cabinet Doors*
Wrapped Cabinet Stiles
Single Bank of Drawers – VBP
Shelf Over Refrigerator
Luan Side Panels
2-Handle Faucet w/Sprayer @ Kitchen
7" Stainless Steel Kitchen Sink
*60" Fiberglass Tub/Shower
Pivot Shower Door for 60" or 48"
Showers – VBP*
Round Commode
*Single Handle Nickel Tub/Shower Faucets
China Lavs at Baths*
2-Handle Nickel Faucet at Lavs
Lighted Bath Fan
Cabinet Knobs Throughout
Corner Cabinet (VBP)

WINDOWS & DOORS

6-Panel Front Door w/Storm
Blank Fiberglass Rear Door
Low-E Single-Hung Vinyl 6/6 Gridded
(sizes VBP)
2" Mini Blinds Throughout
6-Panel White Interior Doors
(2) Mortised Hinges
ORB Round Knobs
Furnace Door (Standard Wood)
Valances at Living Areas

HEATING / PLUMBING / ELECTRICAL

Electric Furnace
Aluminum Heat Ducts
In-Line Floor Registers
200-AMP Service
(1) Exterior Recept
All Copper Wiring
Plumb for Washer
Wire for Electric Dryer
Washer/Dryer Shelf
PEX Water Lines
30-Gallon Electric Water Heater
Main Water Shut Off
(1) Frost Free Faucet

ORB = Oil Rubbed Bronze

Due to continuous product development and improvement, prices, specifications and material are subject to change without notice or obligation. Square footage and other dimensions are approximate. Included images are artist renderings and are not intended to be an accurate representation of the homes. Renderings and Floor Plans may be shown with optional features and / or third party additions that may not be available in all regions or situations. Exterior Renderings may include onsite builder built options not offered by Champion Home Builders, Inc.

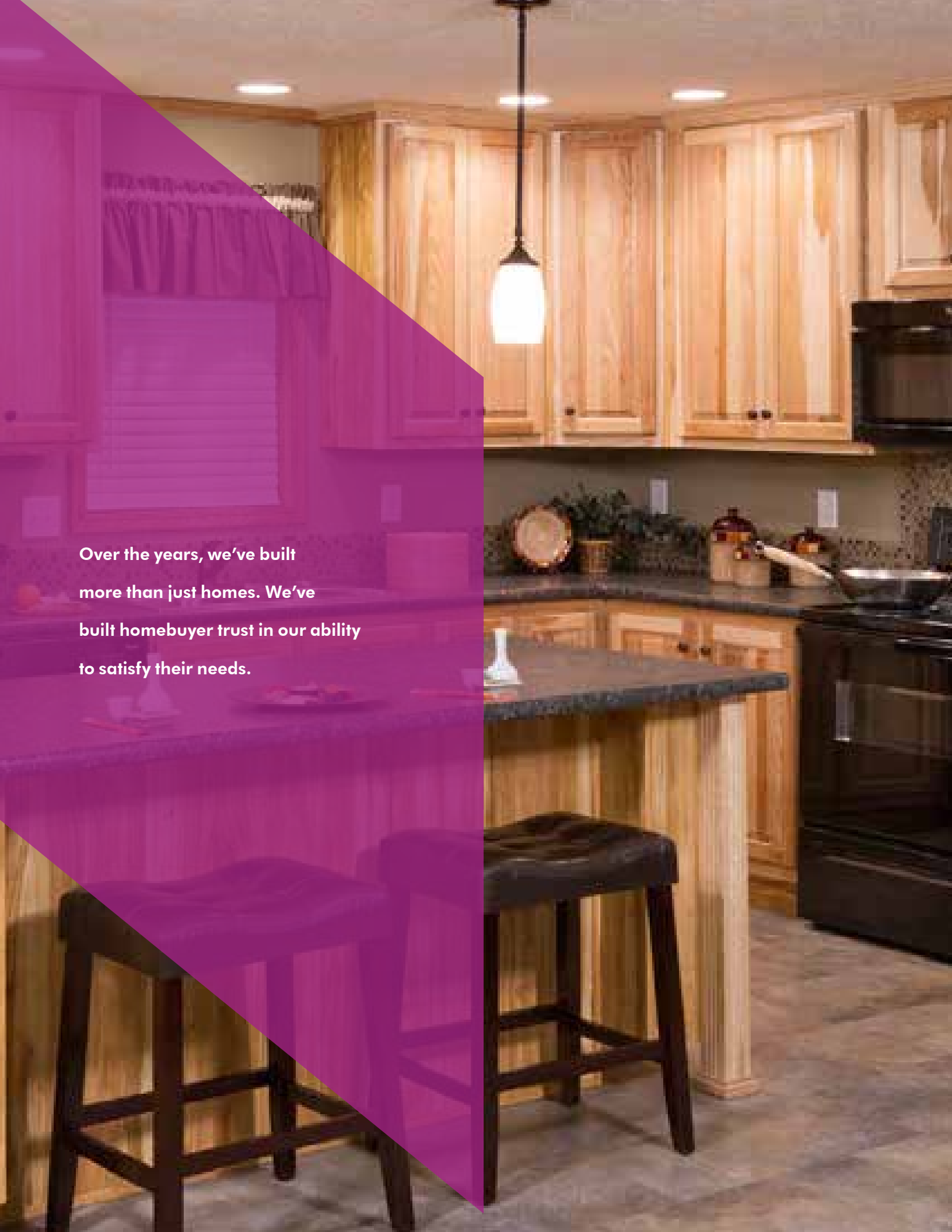
BUILDING THE BEST

We build each and every home to meet or exceed a strict national or state building code, and we set even higher standards for ourselves. Focusing on the things you don't see as well as the things you do, we monitor and inspect our homes at every stage of construction. From the plumbing system to the electrical wiring, from the kitchen cabinets to the closets in the bedrooms – every home we build undergoes rigorous quality inspections to ensure we're providing you with nothing but our best.

The quality you expect

To build the best, we use the best. To meet your expectations of quality – and ours – we use only the highest-quality building materials and trusted national brand names. From insulation and fixtures to flooring and appliances, we only buy components from suppliers who share our commitment to quality. By using the best, we're confident we can build you a home with the lasting value you'll appreciate for years to come. Your housing consultant can tell you more about the specific brands used in our homes.





Over the years, we've built
more than just homes. We've
built homebuyer trust in our ability
to satisfy their needs.



308 Sheridan Drive | Topeka, IN 46571
T 800-777-6637 | F 260-593-2401
www.redmanhomesofindiana.com

CHAMPION®

MANUFACTURED BEAUTIFULLY™